

Photographs



H. Heckendorn

Dear Mountaineers -

Enclosed is a photo album
created by Mr. Rudolf Amster.
Photos date from the 1920s - 30s.

Mr Amster came from
Switzerland and was a member
of the Sattle Mountaineers. I
knew him in the 1970s when he
lived next door to my family
in Beaux Arts Village. On
a snowy Sattle day, he took my
sister & me skiing on the local streets
in our downhill skis... before
x-country was as common as it is
now. He walked to Bellevue daily
but passed away in the late '70s.
I hope ^{the Mountaineers} ~~you~~ enjoys this album
as much as I did.

Larry Heckendorn Post

Proud to Support



our Wounded Heroes

Panoramic view from

Hampback
mt.

Bandana
mt.



Granite Mt.

Kaleetan
chair

The
Tooth

Denny

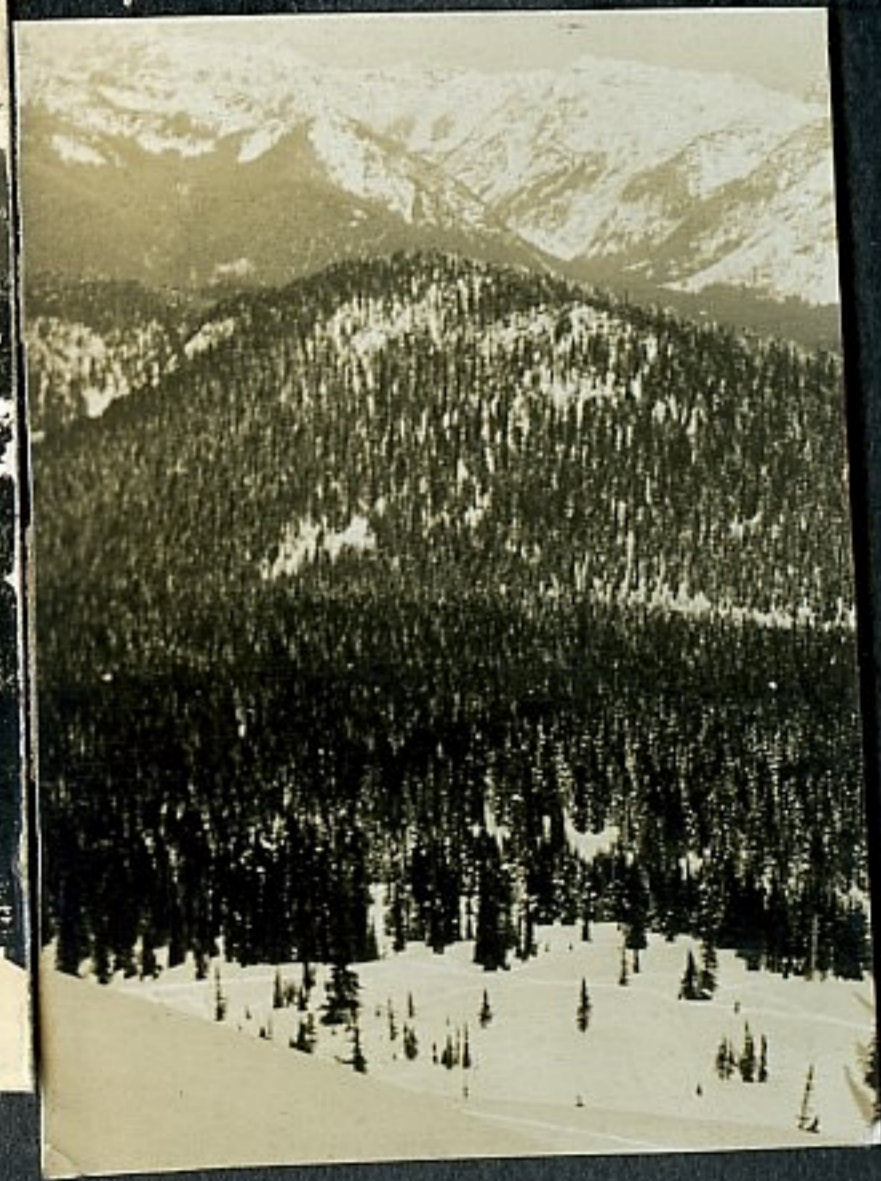
Inouakanic

Buye

Red

Hompson

Chairing

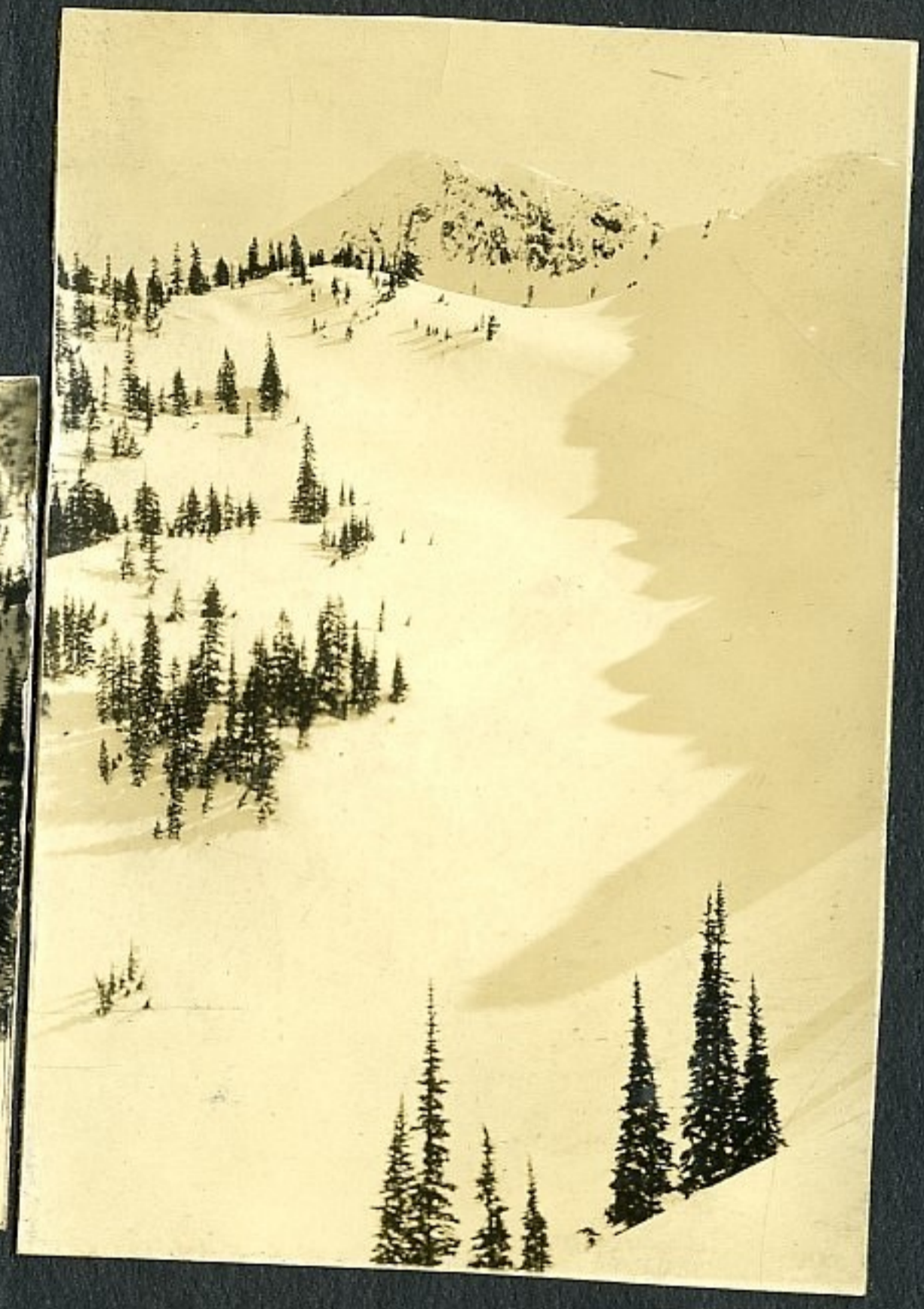


Silver Peak Ridge

Rampart Ridge

Mt. Cathrine

Silver Peak





Skating on Lodge Lake 1929



at Ollalee Meadows



on Meany Hill



Private Mansion on Silver Peak



Meany Ski Hut



on Mirror Lake
1929-1930

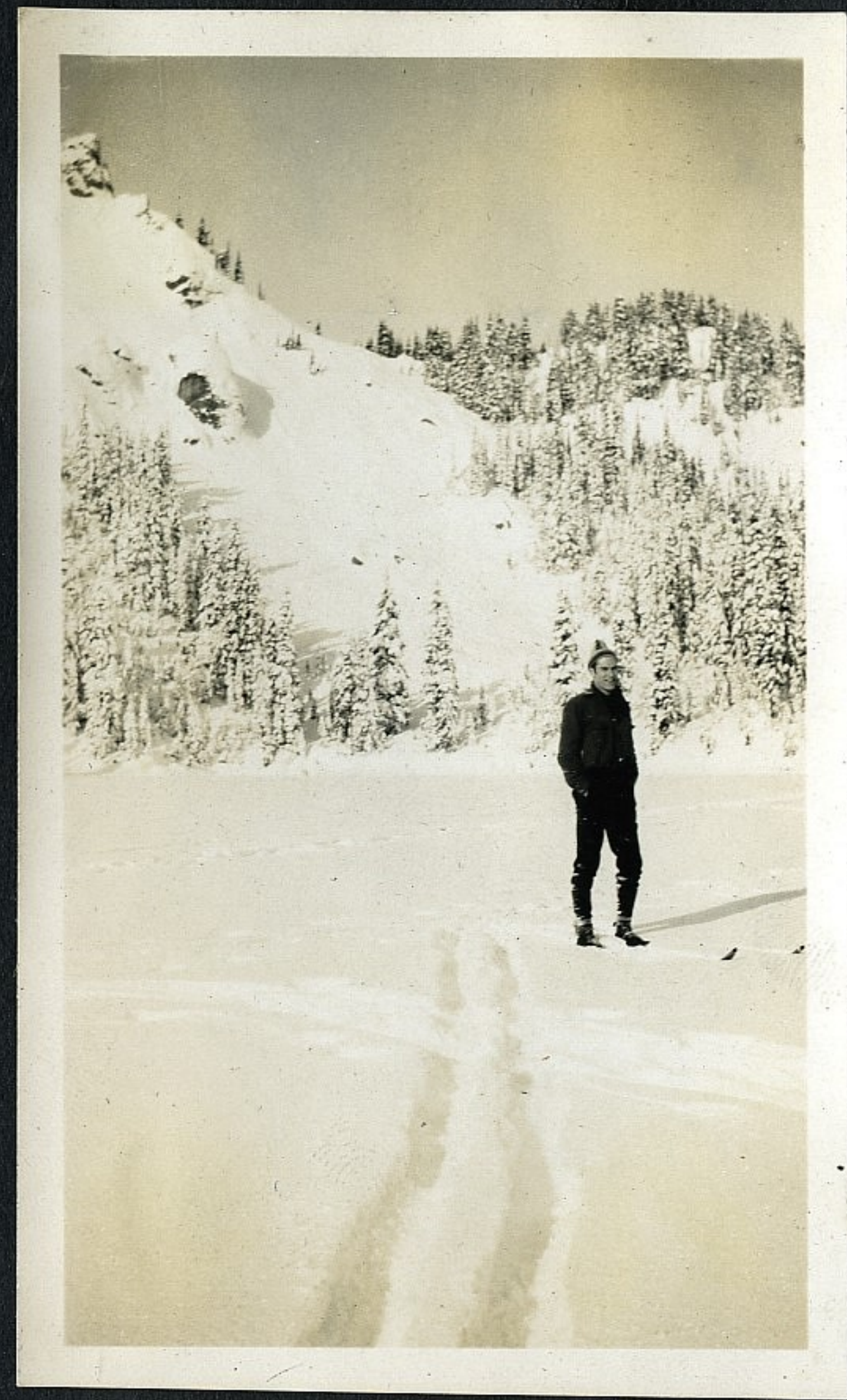


on Mirror Lake
1929-1930

4



Tinkham Peak from Mirror Lake
1929-1930



On Mirror Lake



The Lane above Meany Ski Hut

6



Resting
at
St. Elmo Pass



Looking up Interglacier.
on the way to St. Elmo Pass

Easter



at Starbo Cabin



Ruth Mt. Russell Liberty Cap
cliff
from Starbo Cabin



View
up
Interglacier

1930



Columbia Crest Russell
cliff
from St. Elmo Pass



Part of
Winthrop Glacier
from
St. Elmo Pass



Lower Part
of Inter Glacier
from
St. Elmo Pass



Part of Winthrop Glacier
from
St. Elmo Pass
Russell Cliff left Liberty Cap right

Easter



after the run down from
St. Elmo Pass



St. Elmo
Pass
from
Starbo Cabin



View
from
Starbo Cabin
toward
Ranier

1930



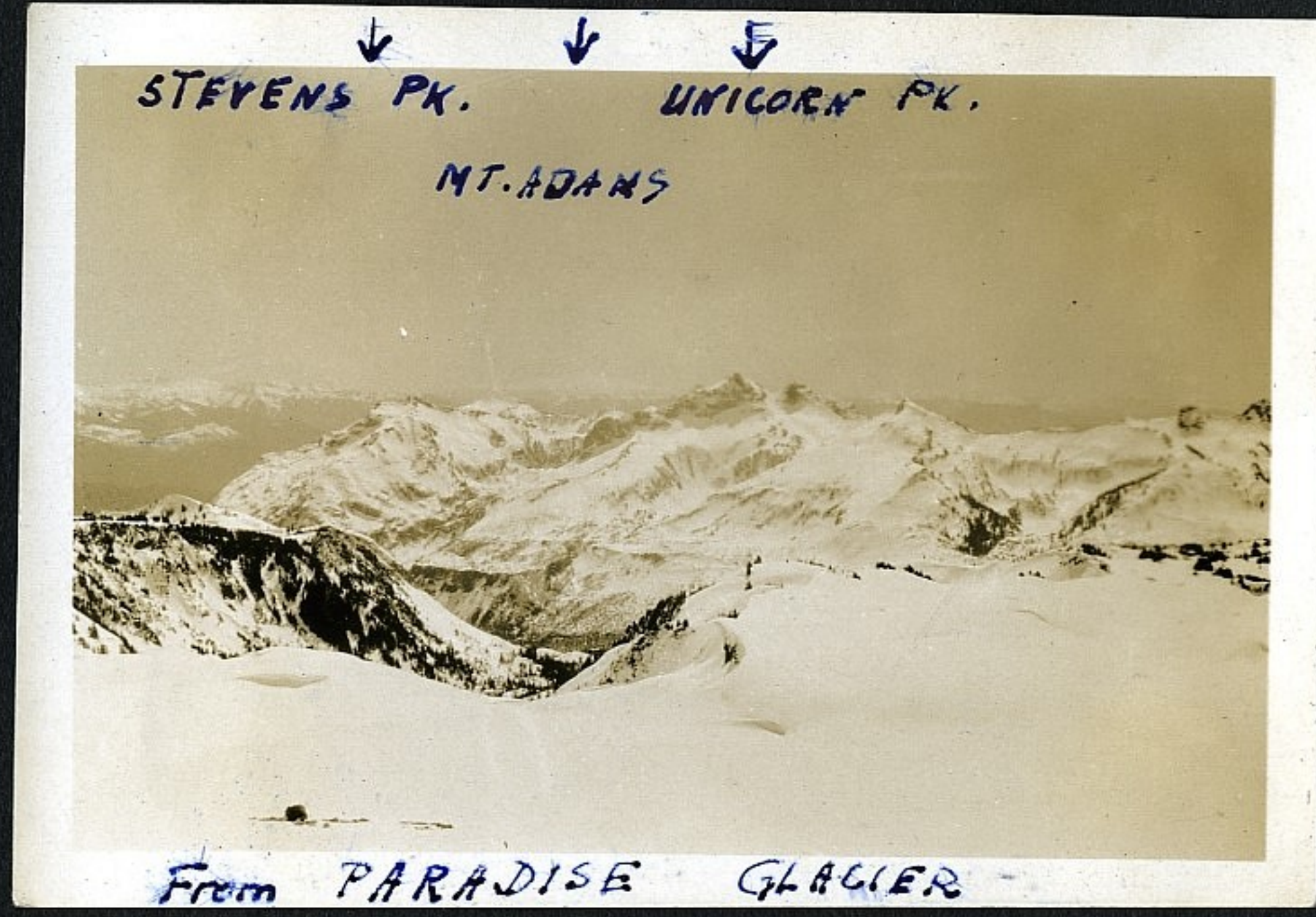
Looking
down
White River
Valley
from
St. Elmo Pass



Visitors
at
Starbo
Cabin



NEAR STEVENS GLACIER

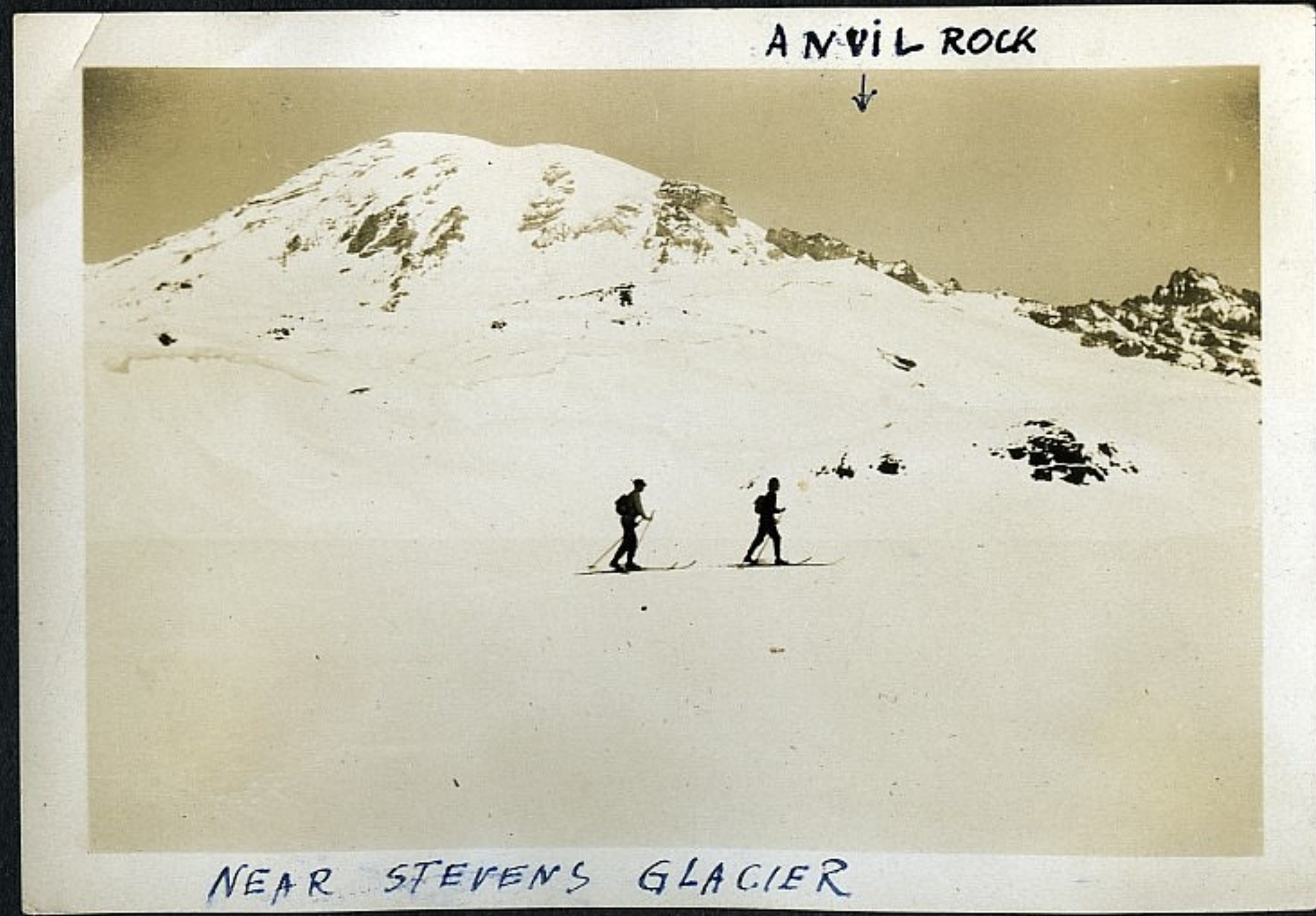


From PARADISE GLACIER

Cowlitz
19

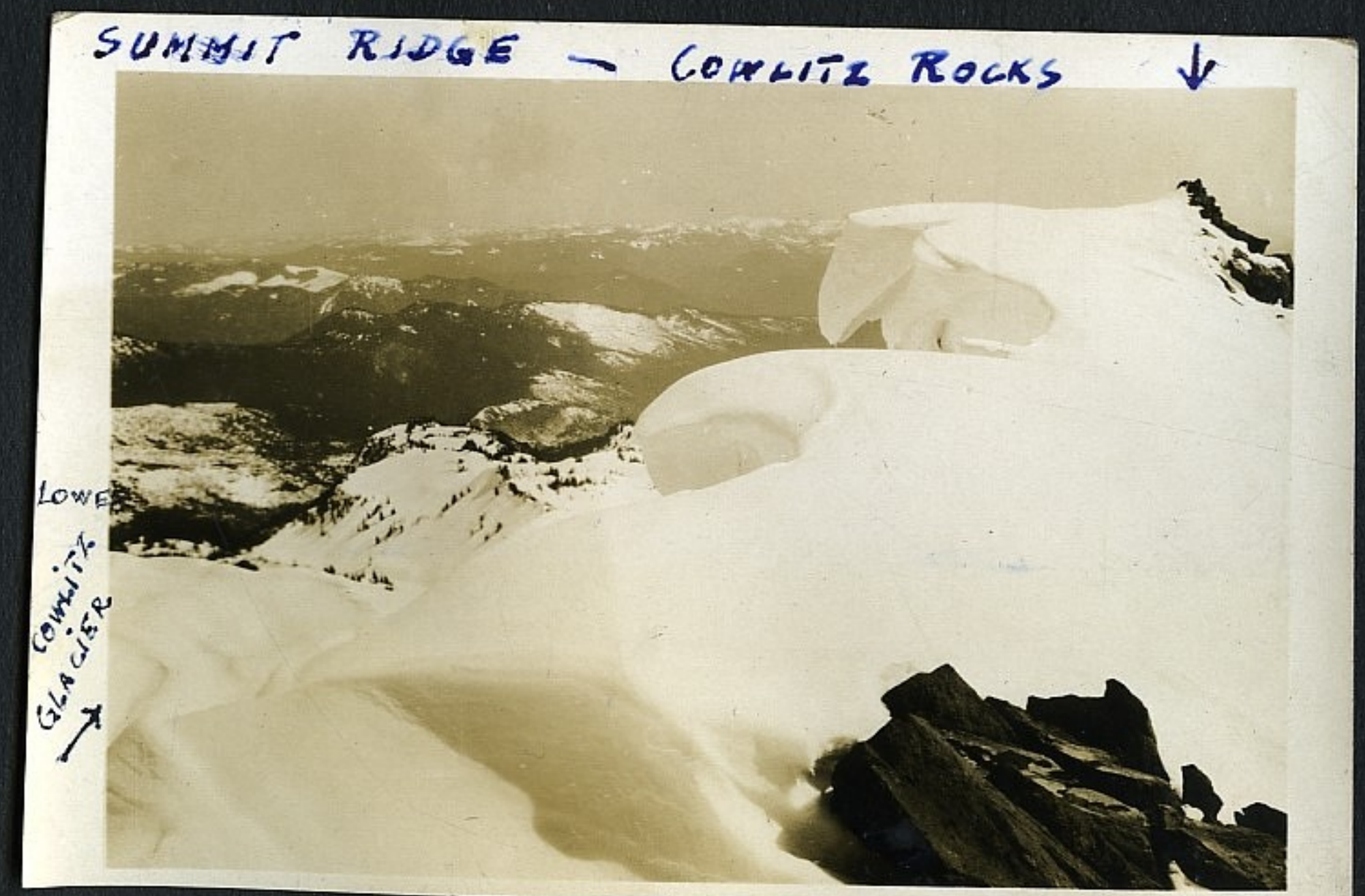
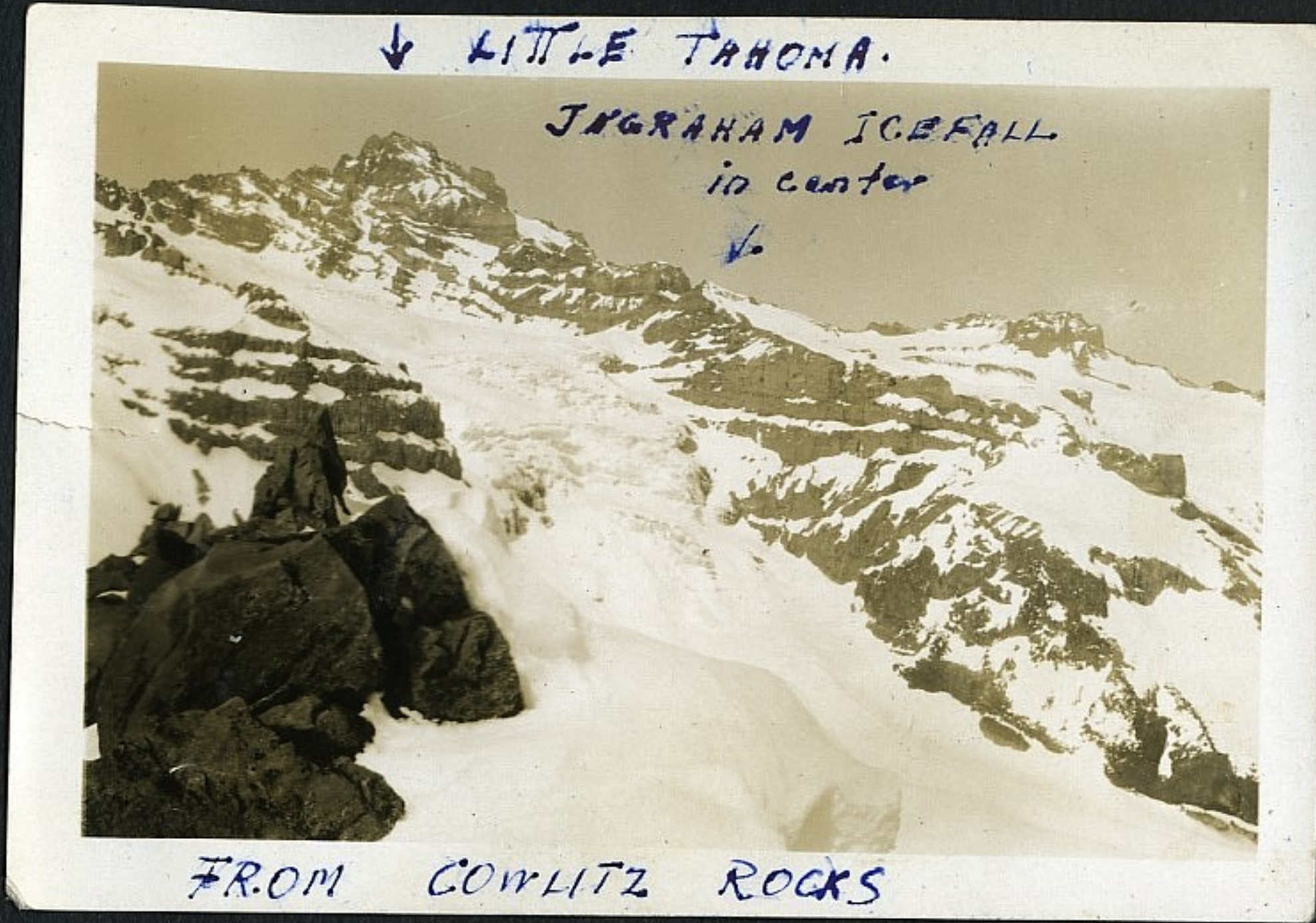
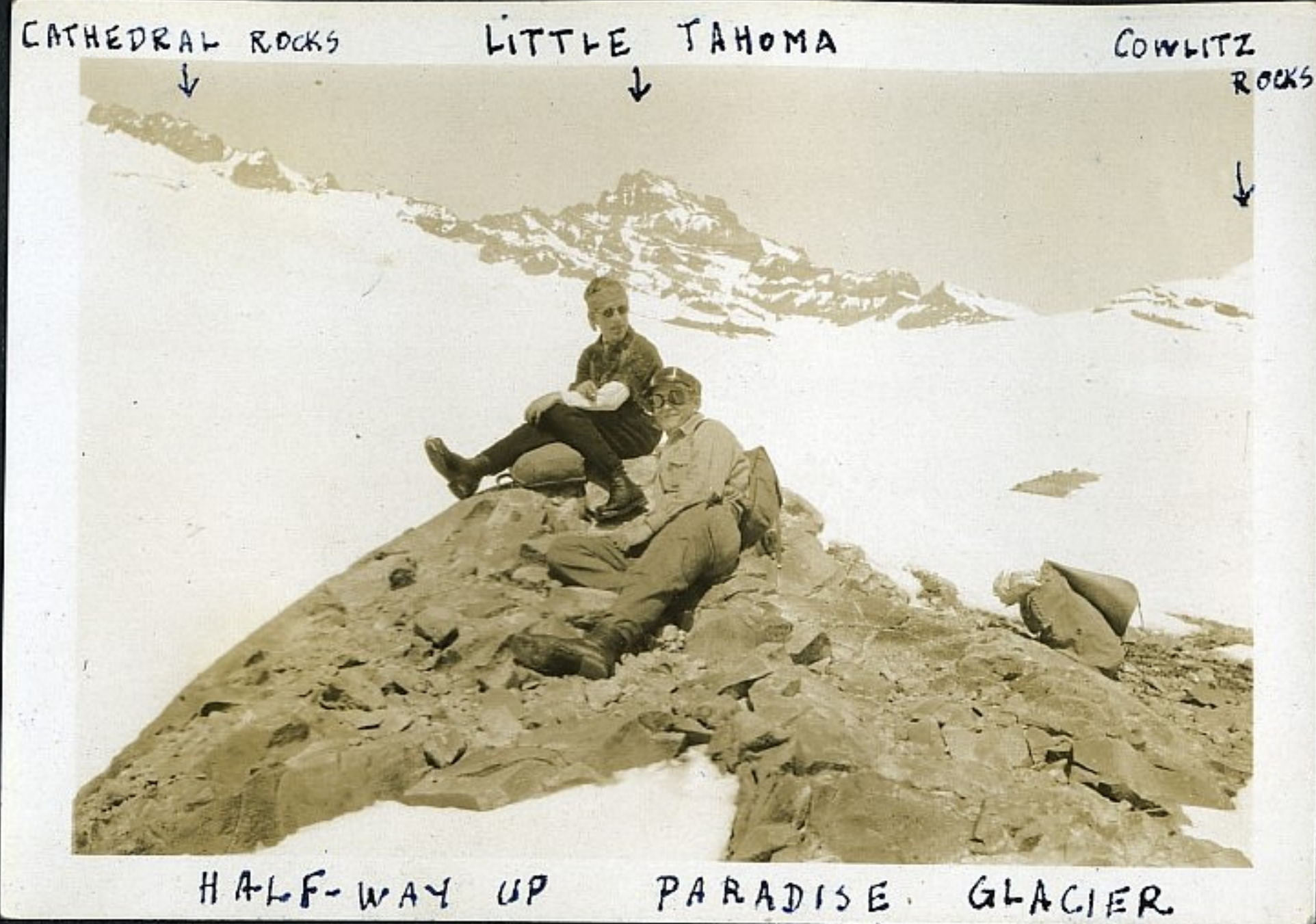


PARADISE GLACIER LOWER PART



NEAR STEVENS GLACIER

Rocks
31



12



That wild herd



Waiting for something to happen



Jan.
19

MEANY
HUT



at the parting
of
the way



That same herd.



What are they doing?

33

SKI

Yan Trumps Park



Mt. Rainier from Rampart Ridge
above Longmire



Looking back towards Paradise Road
and Tatoosh Range
from
Rampart Ridge

April 1933.

15



Tatoosh Range from
Rampart Ridge



Mt. Rainier from
Rampart Ridge

View from Cowlitz Rocks Ridge

Cathedral Rocks

Little Tahoma Inghram Glacier

Whitman Crest

Whitman Glacier



Special Ski Outing

above Skiislin Falls

17



On the way
to
Mazama
Ridge
&
Skiislin Falls



Explorers on Cowlitz Rocks

Cowlitz Rocks May 6-7, 1933



Lunchtime on Paradise Glacier

Approaching Courtly Rocks Ridge



More pictures of Special outing to Cowlitz Rocks May 6-7, 1933

19



another view of our lunchplace



Cowlitz Rocks from N.



on the Upper Paradise Glacier



before the start at Paradise Sunday A.M.



Part of our gang Sunday A.M.



Looking back from Paradise Glacier



Near the end of our uphill track

Special outing
country rocks
May 6-7, 33.



Stormcap on Mt. Rainier. View from Sunrise Camp - Yakima Park

July 4 - 1932.



New Years at
Meany Ski Hut

1933

(see page 12-13)



ON UPPER PARADISE GLACIER



SPECIAL SKI OUTING Spring 1932



New Years at
Meany Ski Hut

1933

(see page 12-13)



Additional Pictures of



Pyramid Peak from Van Trumps



Iron Mt. & Crystal Mt. from
Rampart Ridge

Van Trump Park

April 1933

(see page 14-15)



Jatoosh Range from Pinacle to Eagle Pk.
from Raupart Ridge



Crystal Mt. & Pyramid Pk.
from Raupart Ridge

26



View from home Meany Hill
toward Lake Keetchelus &
Lodge Mts. May 1933.



Inoqualmic Lodge
at right.



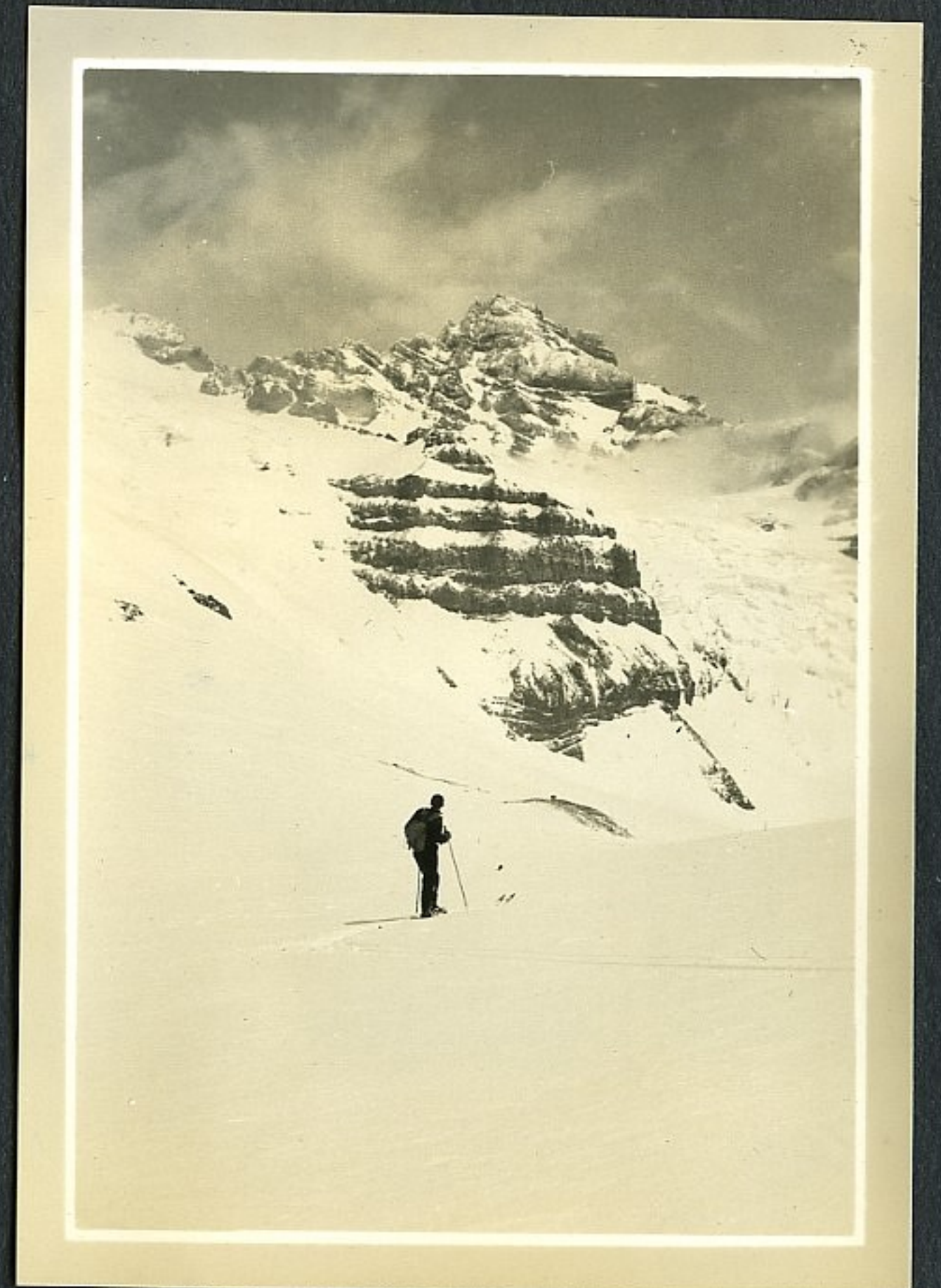
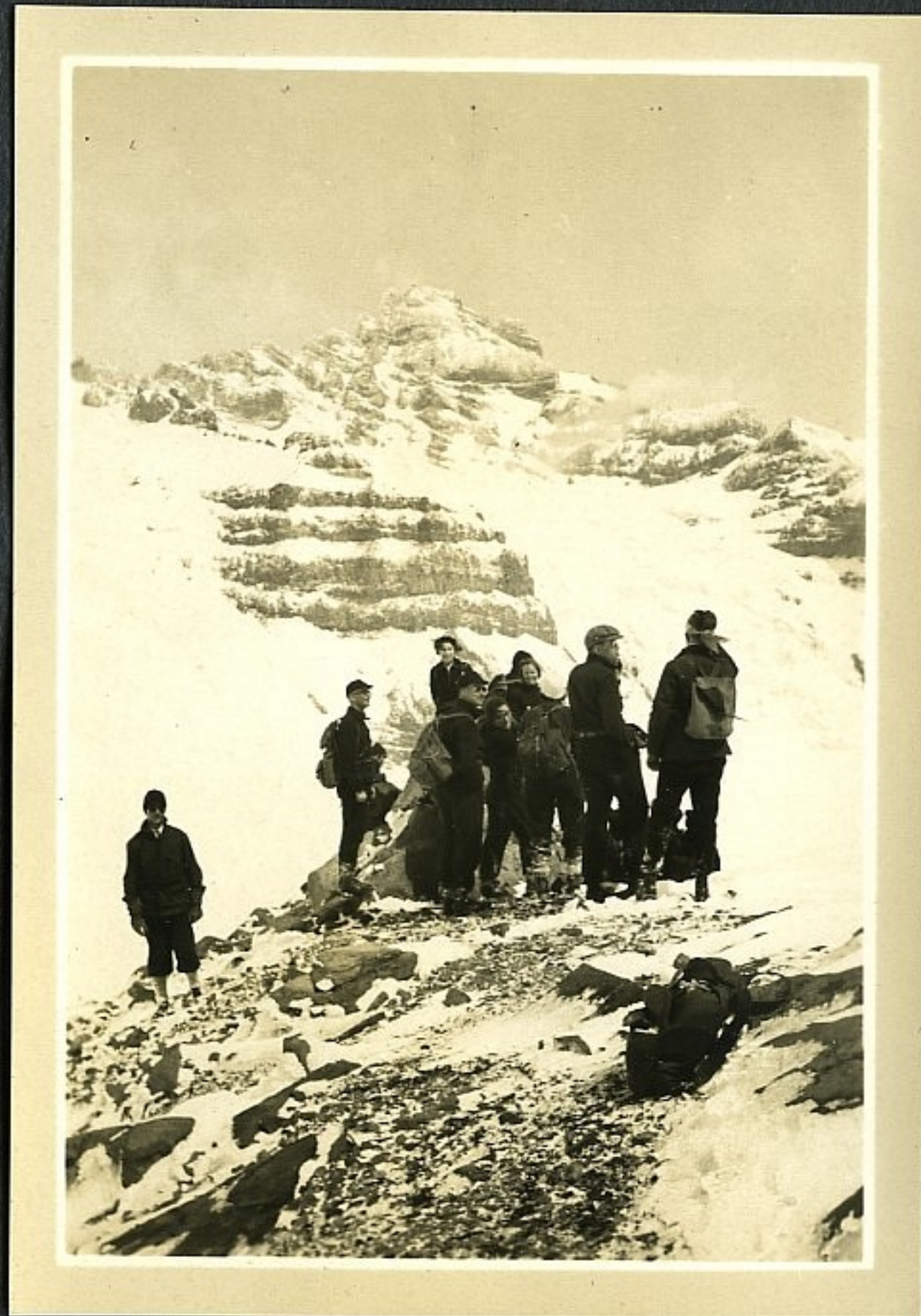
on Rockdale Lake
Jan. 1933.



LITTLE
TAHOMA
From
Cowlitz Rocks



ON
STEVEN'S
GLACIER



More Pictures of
Cowlitz Rock outing
May 6-7, 1933.

See Pages 16-20

28

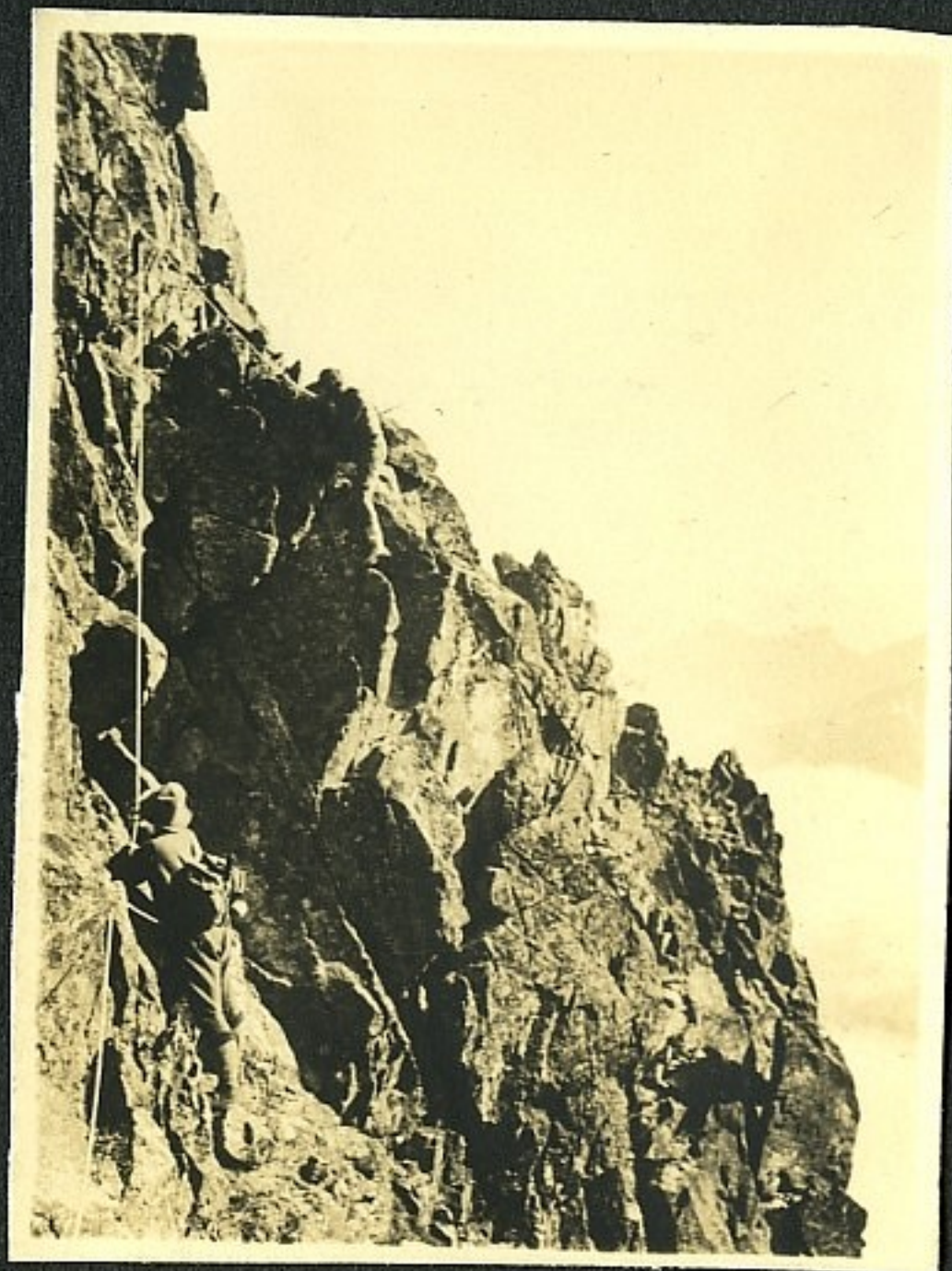
Meany Hut



on Mt. Rainier



1



2



3

Pictures 1-3

Mt. Jerron Group

Granite Mt.
from Burn



on Silver Pk. Trail



Red Mt.



Silver Pk. Basin



Mt. Baker from Shuksan



Knapatche Park



on Meany Hill.
Looking toward Meany Hill - Power Hill
Divide
Upper Stampede Crossing



Meany Ski Hut



a snowy day at the lodge

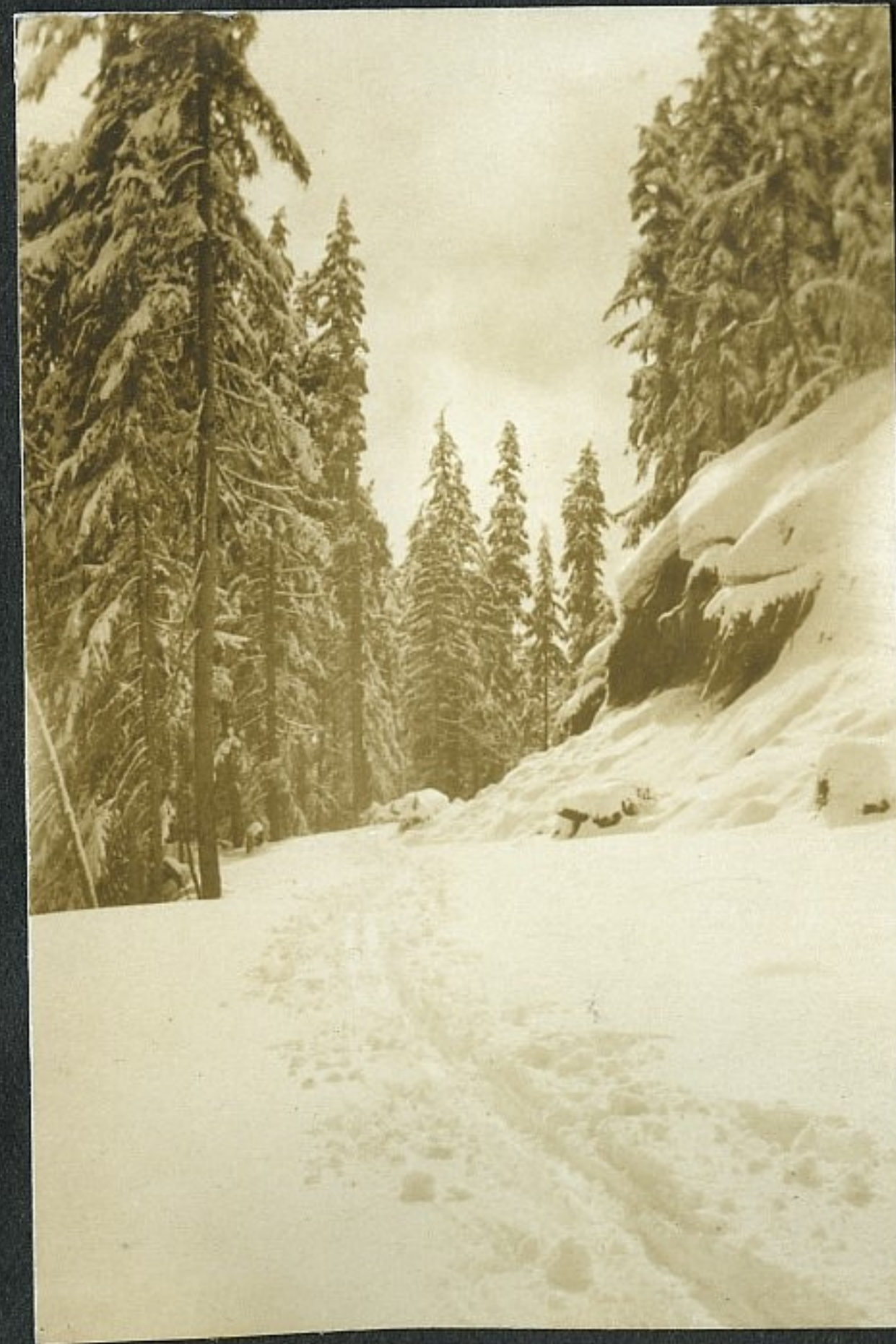


new snow at the lodge

31
on Mt. Baldy
looking toward Meany Hill



on South Side of Silver Peak
near the Woodpile
Dec. 29, 1929
8 A.M.



~~near Baldy Pass~~
near Baldy Pass

Mt. Baldy Trip.

Monday, Febr. 12, 1934.

5 Survivors of Lincoln's B'day weekend.

33



View from Baldy Lunch Place toward Meany Hill
Stampede Pass in foreground

Baldy Lunch Place



Looking N.E. from Mt. Baldy

Looking S.W. from Mt. Baldy

34

Believe it
or not!





Meany Ridge
from
Baldy Lunch Place

Views of Downhill Race Course

Baldy Lunch Place

Baldy in background





Yakima Peak. Looking west



Mt. Rainier from near Tipsoo Lake

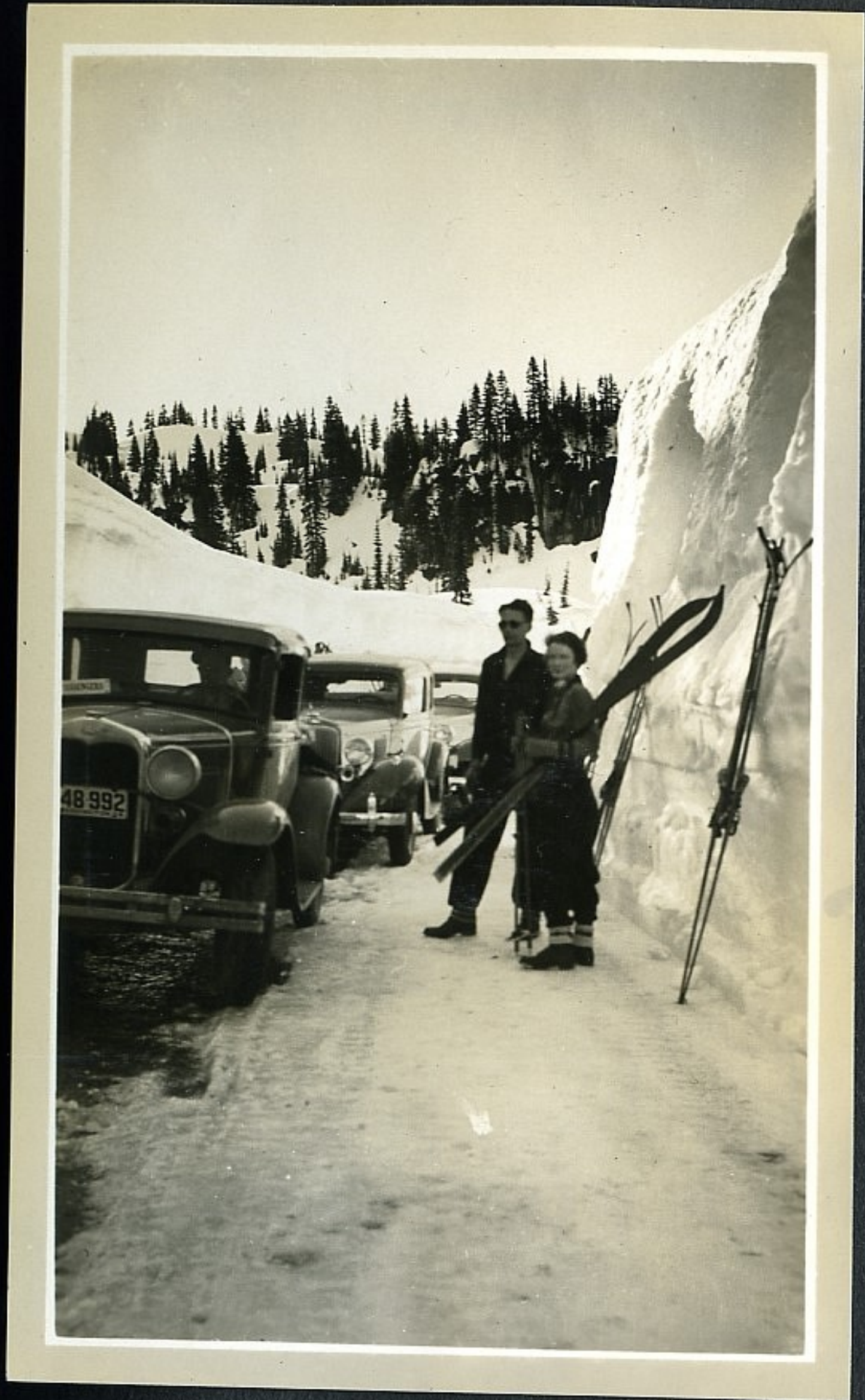


Near Tipsoo Lake

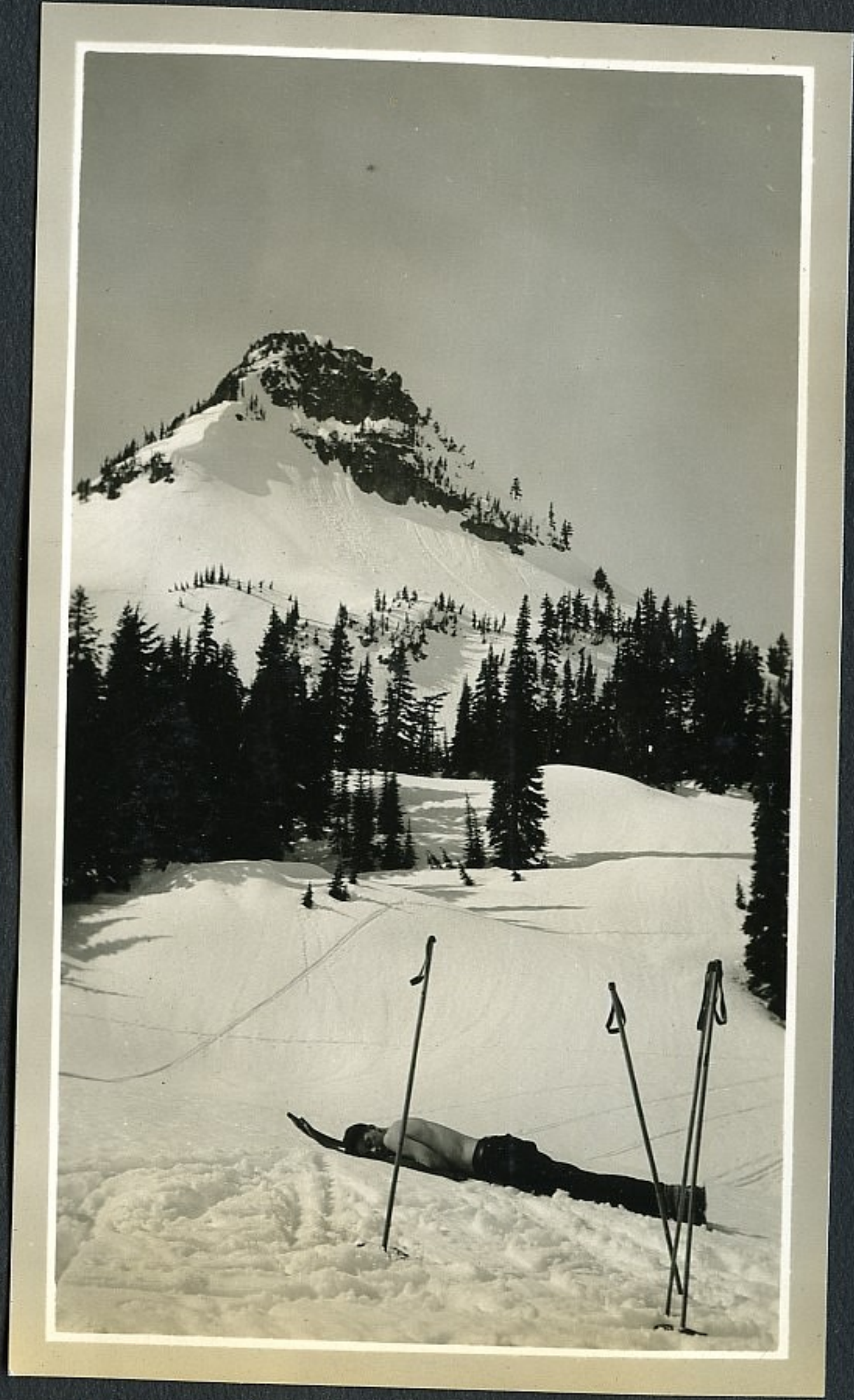


Waterhole on Tipsoo Lake.

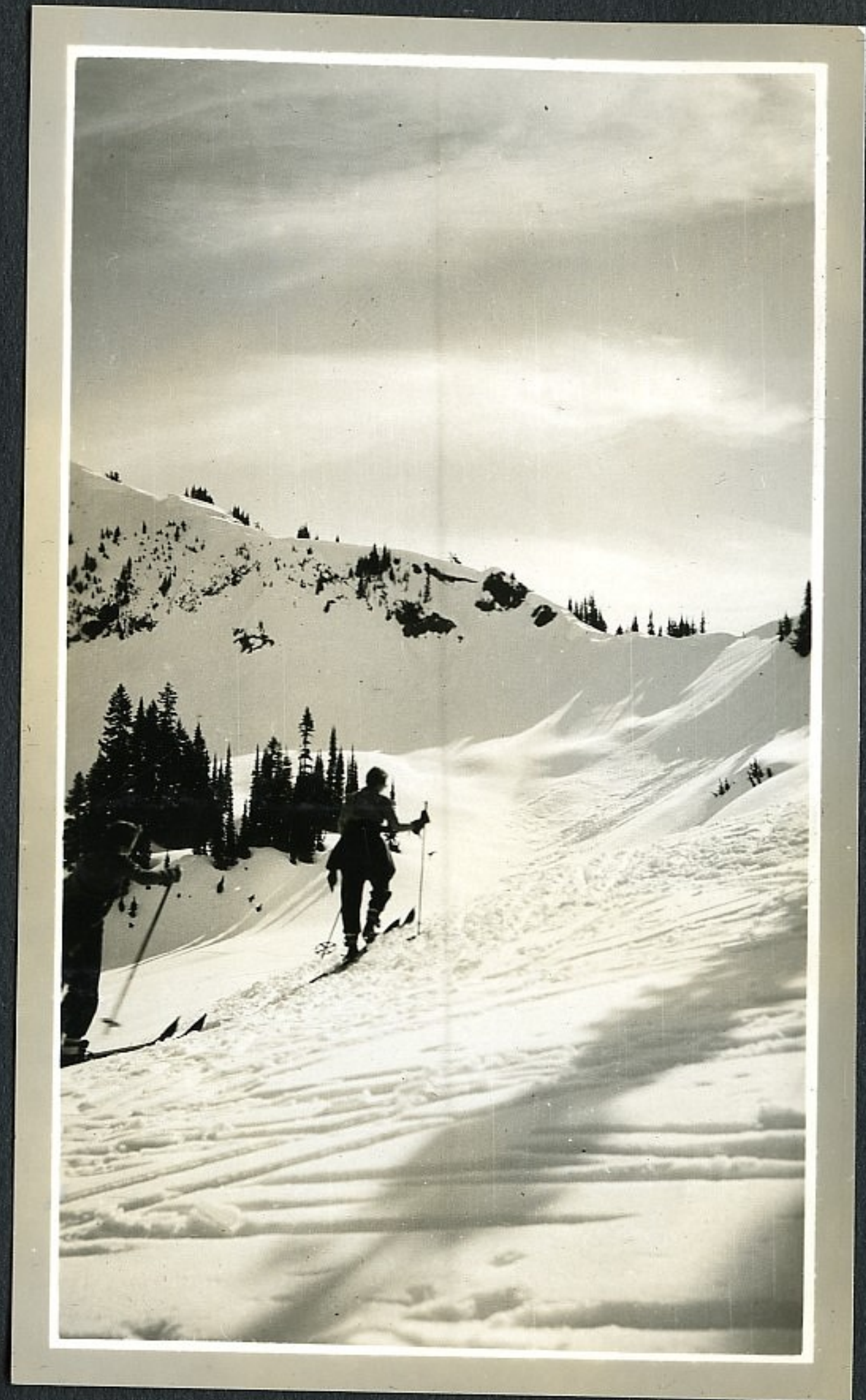
Chinook Pass Special outing Spring 1934



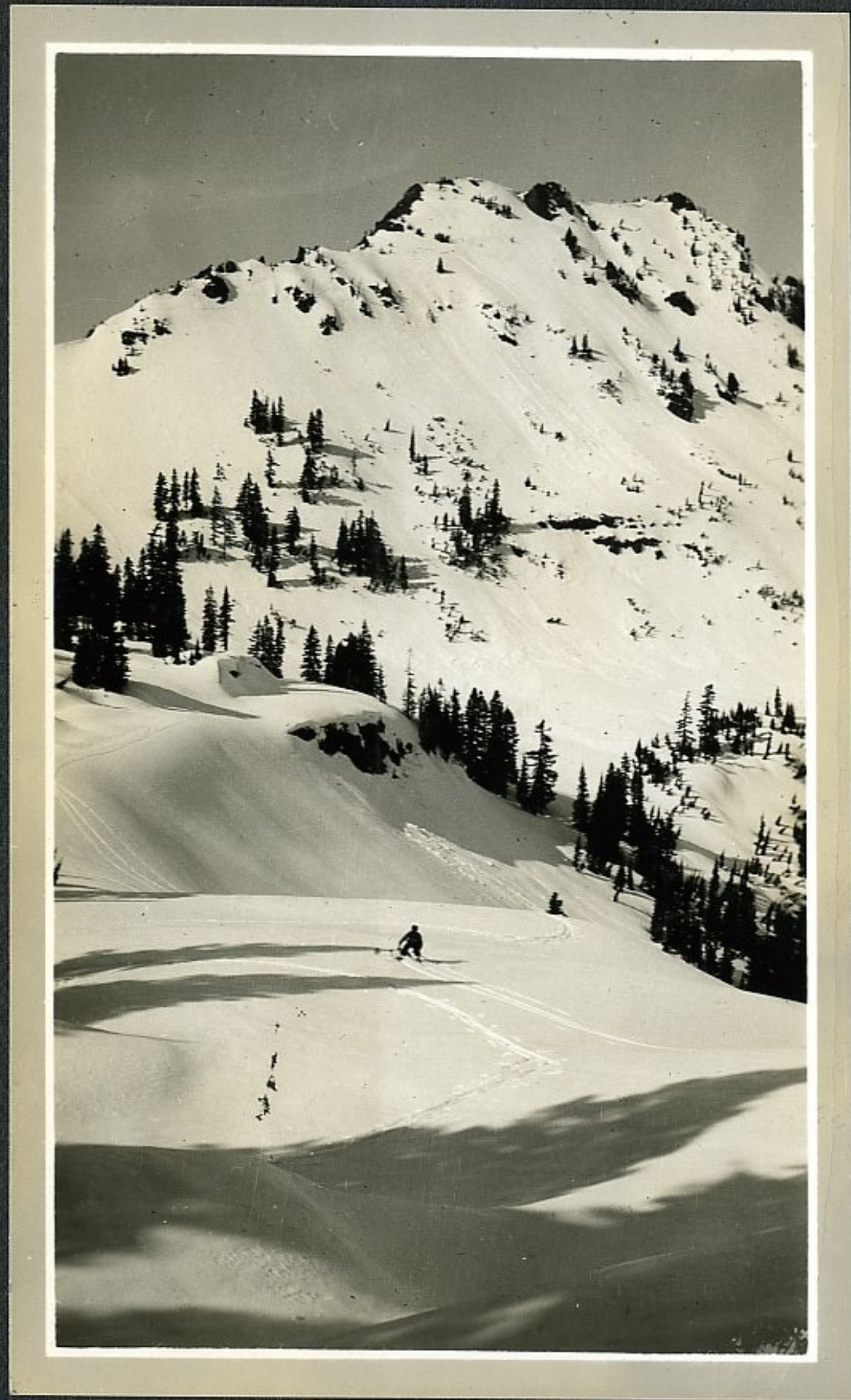
The End of the Road
below Tiptoo Lake



Yakima Pk. from Chinook Pass



So. Ridge of Hatches Peak.
looking East



on the other side of
Chinook Pass



above Tepees Lake



View from above Tepees Lake

Special
Chinook
Spring

Betting
Pass
1934



The waterhole on
Tipsoo lake



near Tipsoo Lake



Bugs on Tifsoo Lake

SPECIAL
Spring

↓ West Ridge of Seymour Pk.



↑
MT. ADAMS in distance



↑
VALLEY of the Chinook,
Okanapocosh & Cowlitz Rivers.

Cowlitz Chimneys



RAIMER



↑
on So. Ridge of MATCHES PK.

on Tipsoo Lake

Ski Outing

1934



Sunrise - Yakima Park



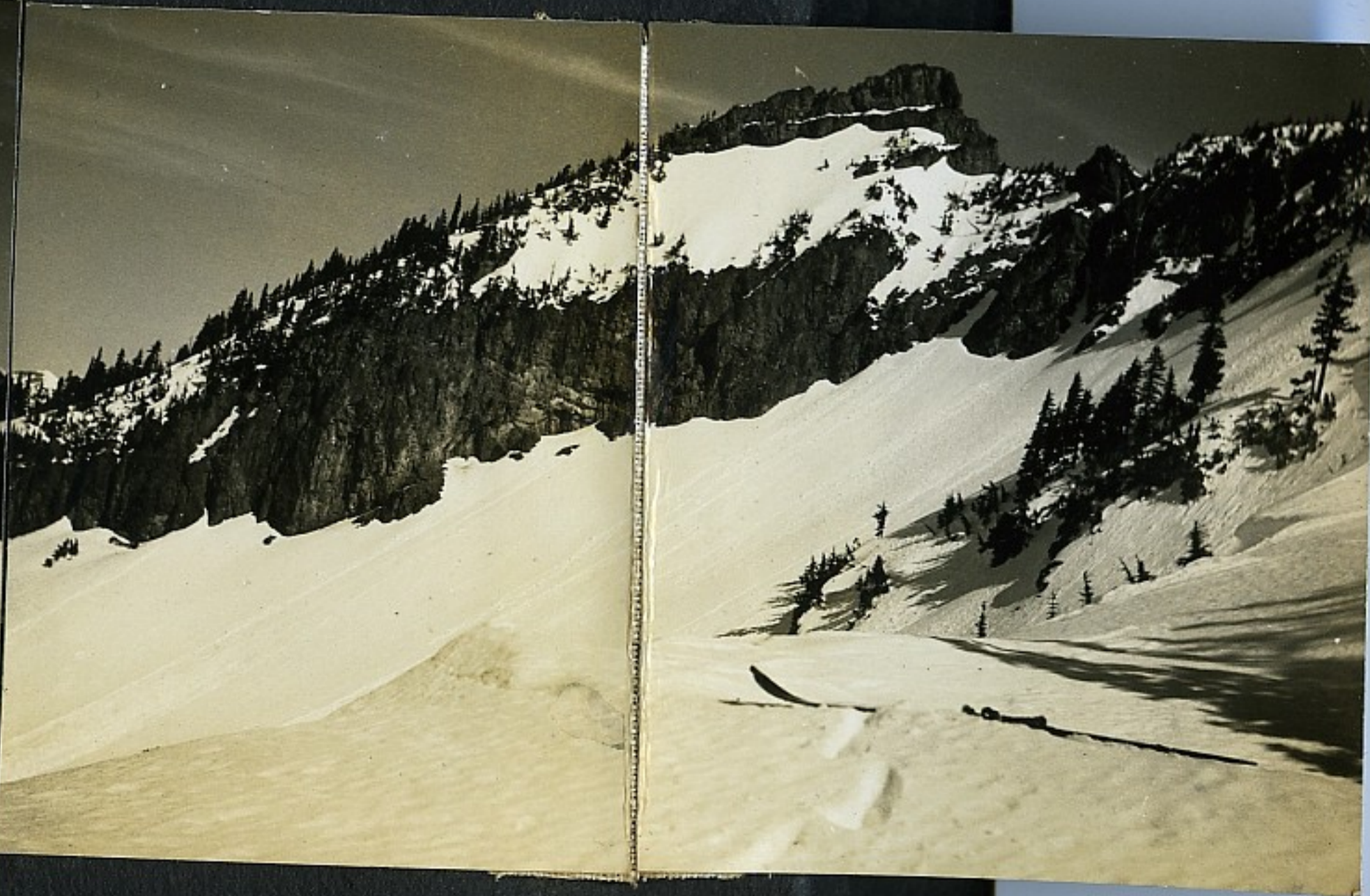
Yakima Pk.



Deadwood Basin



NATCHES Pk.



↑ Chinook Pass Highway

↑ Tipsoo Lake

↑ CHINOOK PASS



Stone shelter on Silver PK.



MEANY
WOODS
in
WINTER



MT. RAINIER
From
TIPSOO LAKE
in Summer



2 27 35

The LANE
near MEANY SKI HUT



2 27 35

MT. BALDY
From Avalanche Flats
Stampede Pass



2 27 35

on the new STAMPEDE ROAD
below STAMPEDE PASS
East side



2 27 35

MT. BALDY

From Stampede Pass



near MEANY SKI HUT



5 23 35

CHINOOK Pass - TIPSOO LAKE
MAY 1935



Chinook Pass

MAY 1935

CARBON GLACIER - WILLIS WALL



MOTHER MT. RANGE
SEATTLE PARK



MORaine PARK

June 1933

sl

2
7
36



DECEPTION PASS

FEB. '36

LOWER
CRYSTAL
LAKE



ABOVE
UPPER
LAKE



CRYSTAL
CREEK-
CRYSTAL
LAKE

BETWEEN
LOWER &
UPPER
CRYSTAL
LAKE



PART OF
CASCADE
RANGE
FROM
CRYSTAL
LAKE
BASIN



SPECIAL SKI OUTING APRIL 18-19, '46



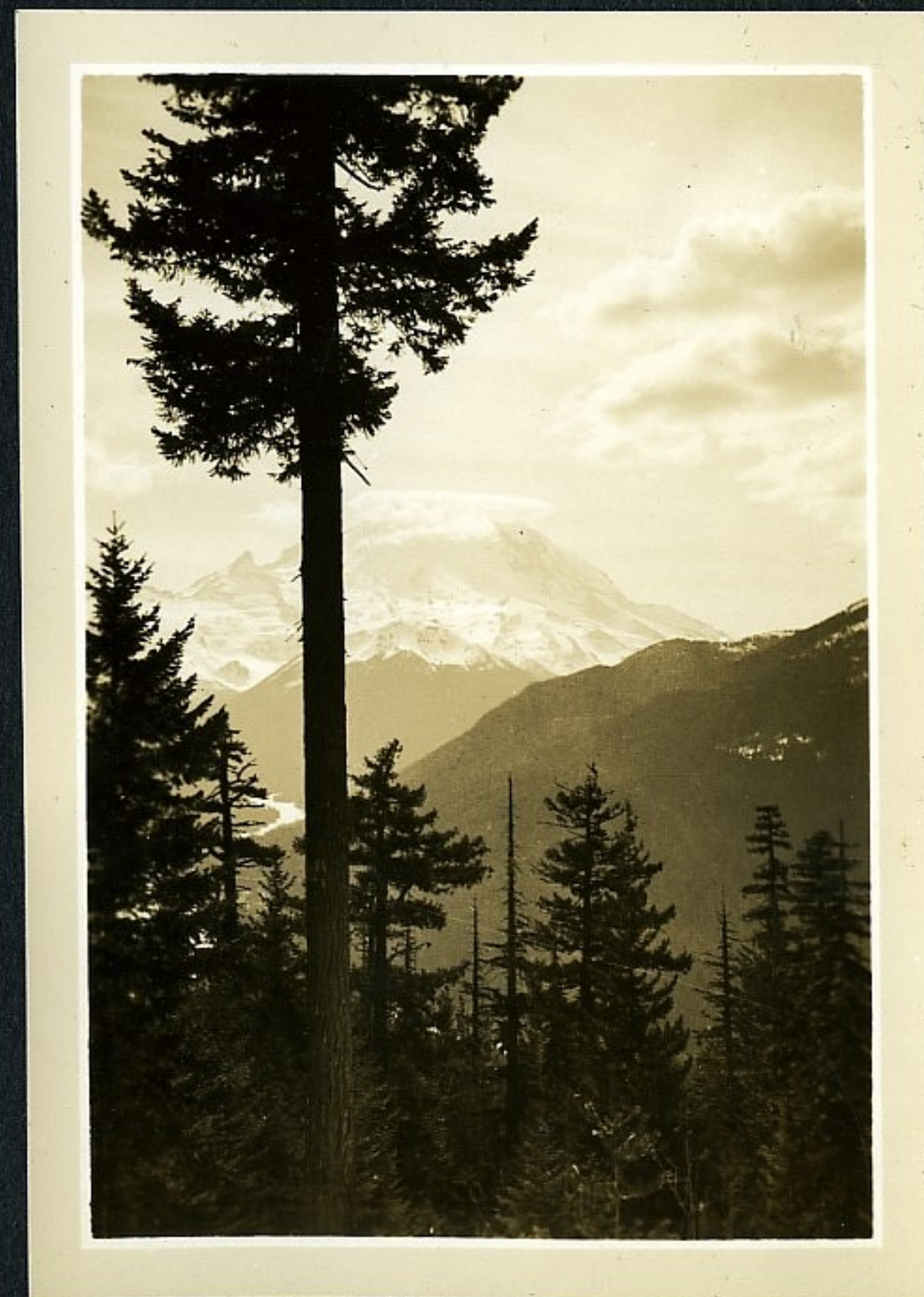
AVALANCHE
NEAR
UPPER
LAKE



NEARING
UPPER
LAKE



VIEW FROM LOWER LAKE



MT. RAINIER

SPECIAL SKI
OUTING

APRIL 1936

CRYSTAL
CREEK

CRYSTAL
LAKE



MT. RAINIER
FROM LOWER
CRYSTAL BASIN
SPECIAL SKI OUT'G
APRIL 1936

MT. RAINIER
From Eagle Cliff.
N. Movich Canyon
& Glacier



DEWEY LAKE in June 1936













Mr. Rudolph J. Amster
Lead Scurry,
Marton, W^{va}