

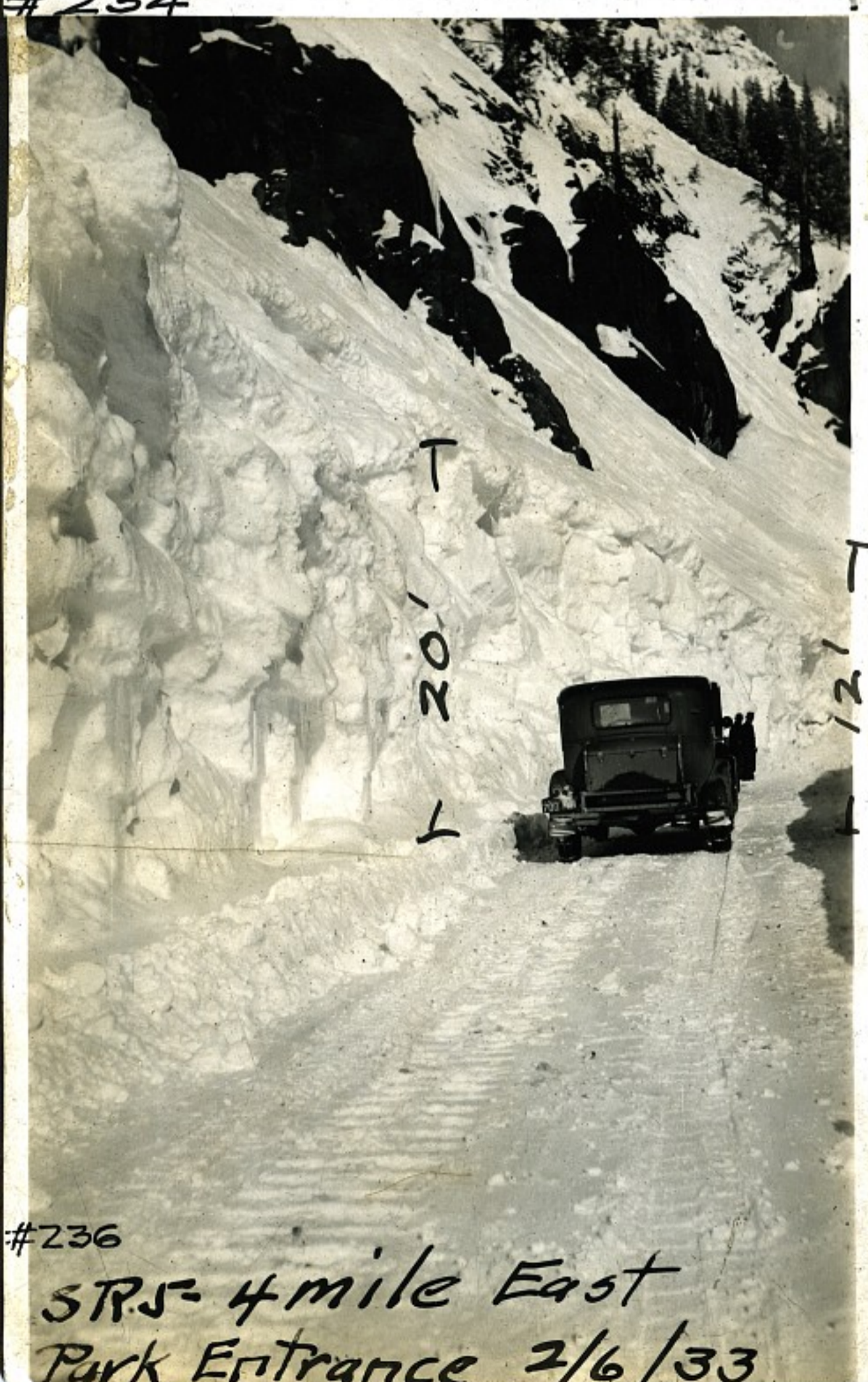
PHOTOGRAPHS



#234

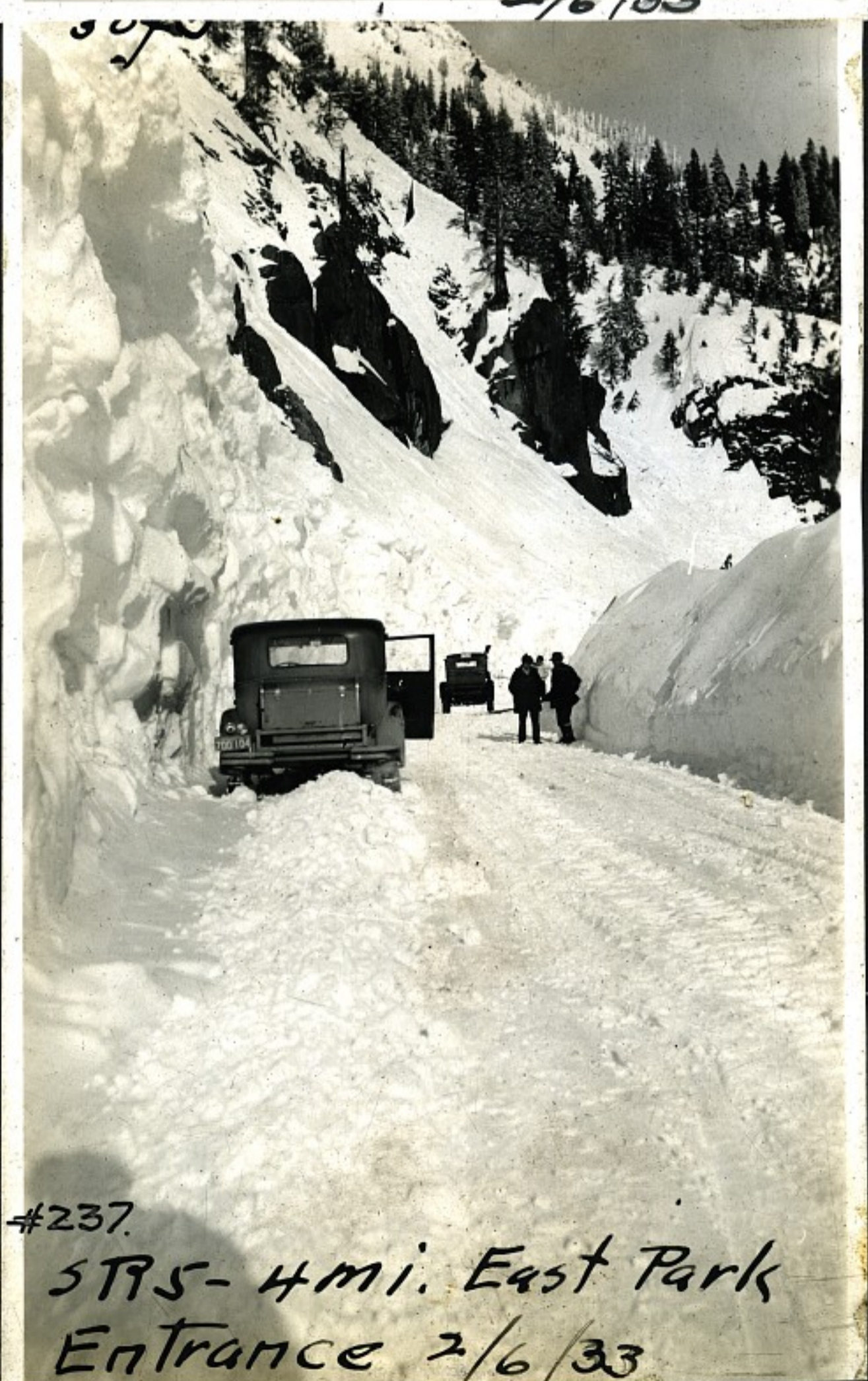


SRS-2 1/2 mi. East Park
 Entrance-Thorough Cut
 East Von Der Hellen Camp
 2/6/33



#236

SRS-4 mile East
 Park Entrance 2/6/33



#237

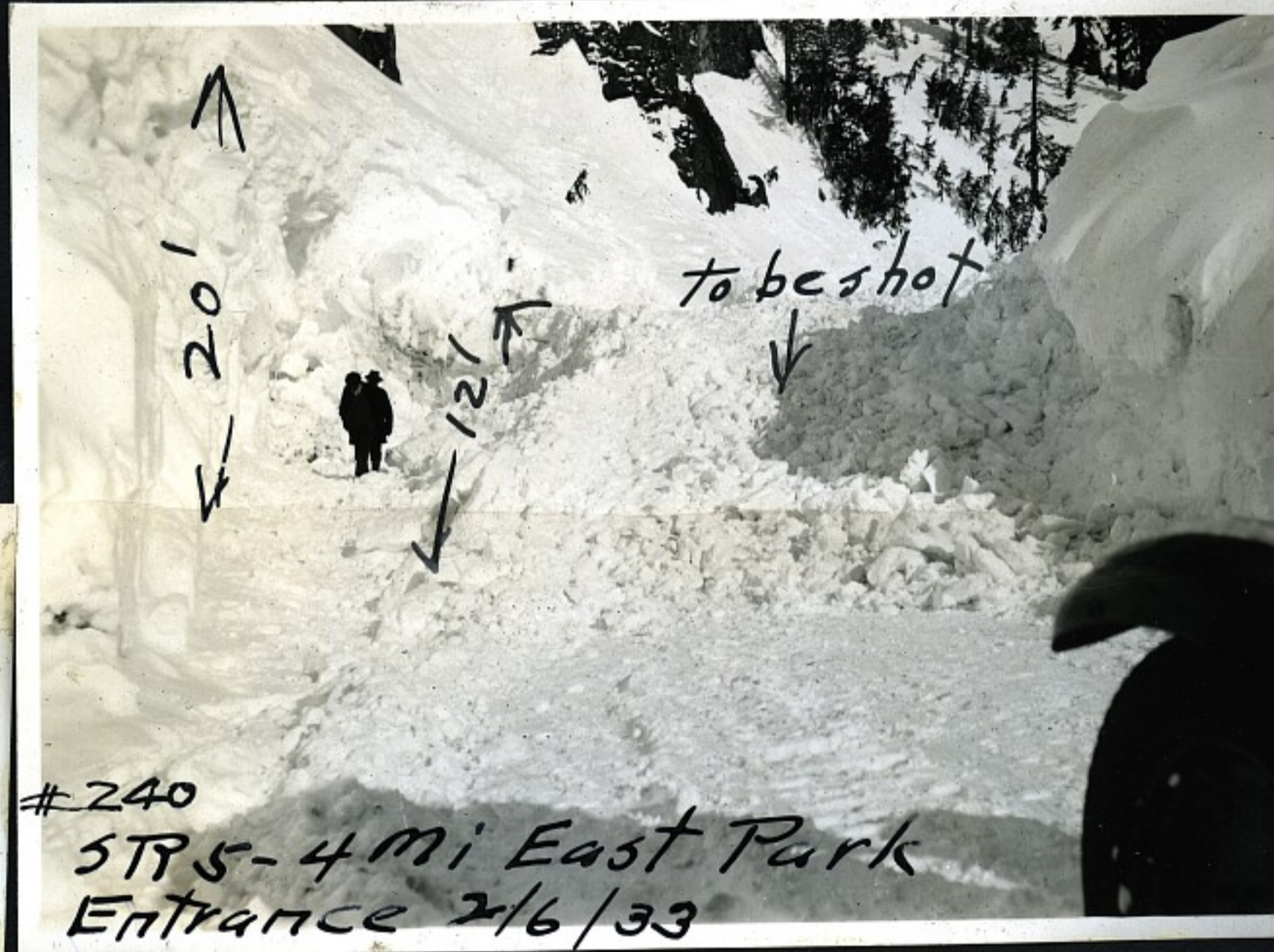
SRS-4 mi. East Park
 Entrance 2/6/33



SRS-4 mi. East Park Entrance 2/6/33
#238



#239
SRS-4 mi East Park Entrance



#240
SRS-4 mi East Park Entrance 2/6/33



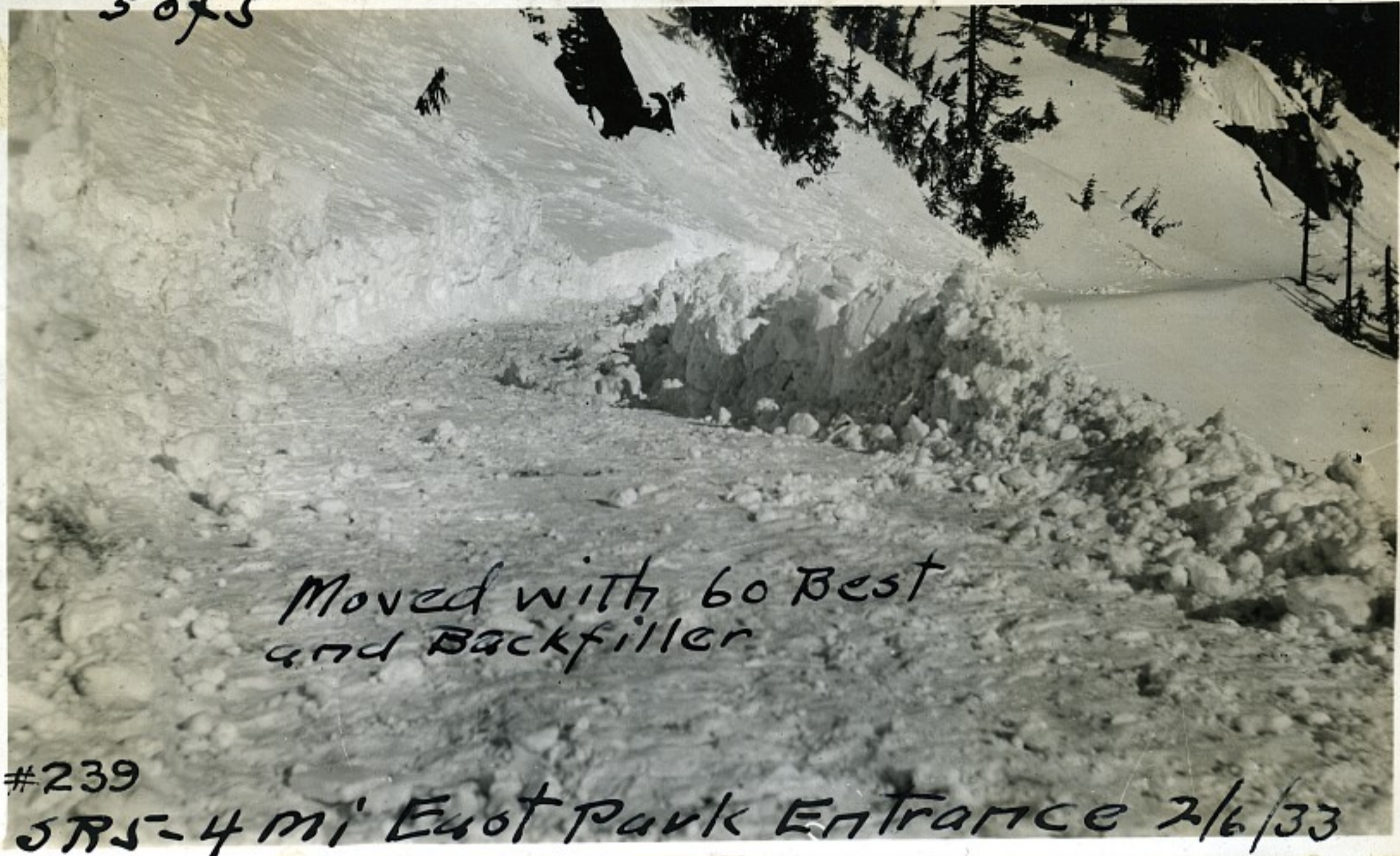
#242.
Stevens Pass Skykomish

Feb 4-1929-4 ft.



Stevens Pass Near Miller River 4 ft.

5 of 5



Moved with 60 Best
and Backfiller

#239

STPS-4 mi East Park Entrance 2/6/33

4 of 5



#240

STPS-4 mi East Park
Entrance 2/6/33



Stevens Pass Near Miller River 4 ft. Feb 4-1929

#241.

Feb 4-1929-4 ft.



#244.
S.R. 15 East of Eagle Falls 3' Depth 1/31/33



#245
S.R. 15-Top Hill West Index 18" 1/31/33



#243
S.R. N - Eagle Falls 3' 1/31/33



10 of 3°
#246
S.R. 15 - looking up Ravine
where slide cleaned Timber
3/12/33 3/4mil

3 of 3
#247



SRS - East side of "F" slide
3/4 mi. West of "Y"
3/12/33

2 of 3
#248



SRS - West side of slide
3/4 mi. West of "Y"
3/12/33

1 of 3



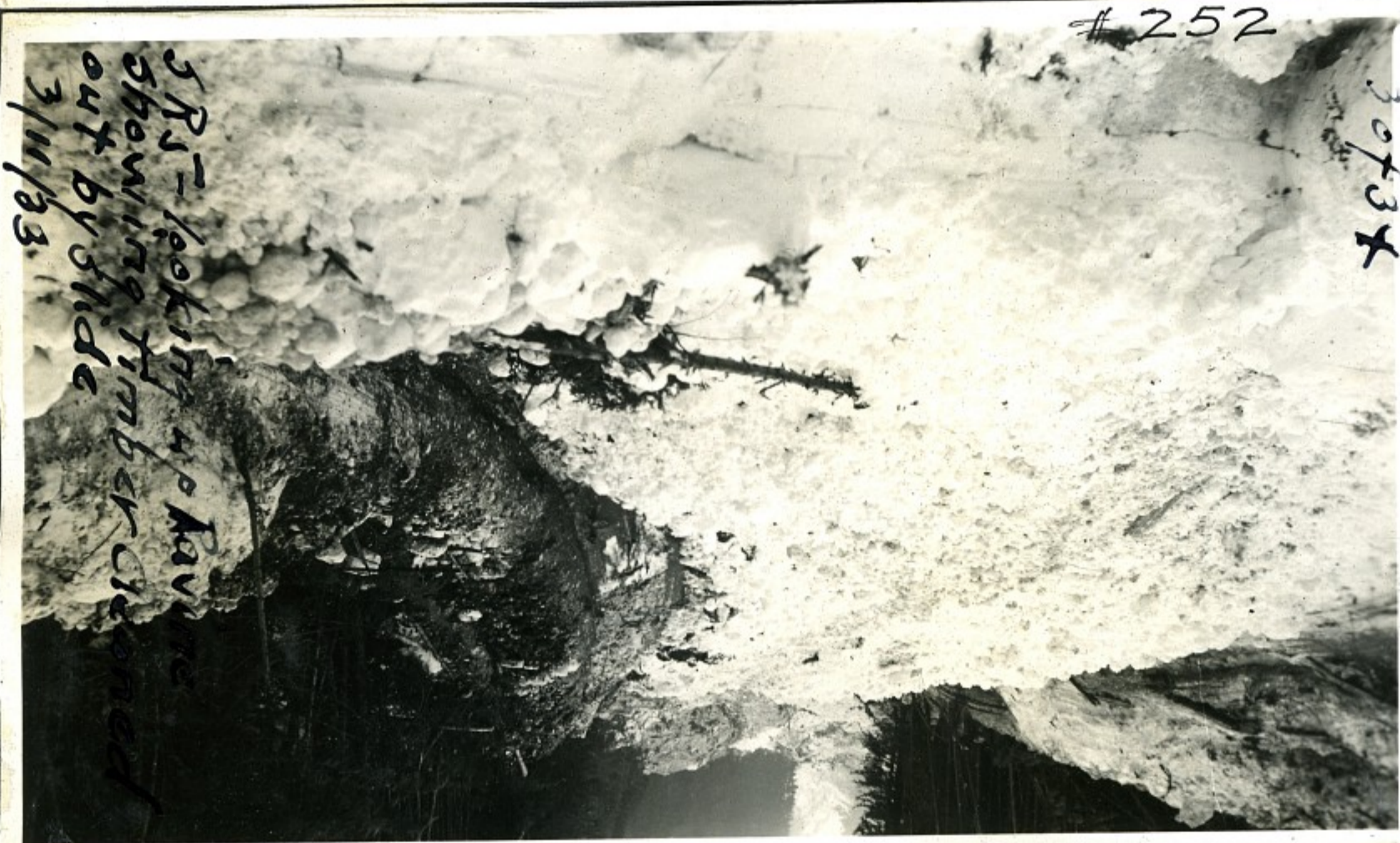
#250
East side of slide
3/12/33



#249.
1/2 mi. West Snog. Pass
2/21/33



#251
NE East side of slide 3/12/33



#252
SR5 - looking up Ravine
showing timber cleared
out by slide 3/14/33



#254
Summit of Noq. Pass 2/21/33



#253
SR2-50
2/21

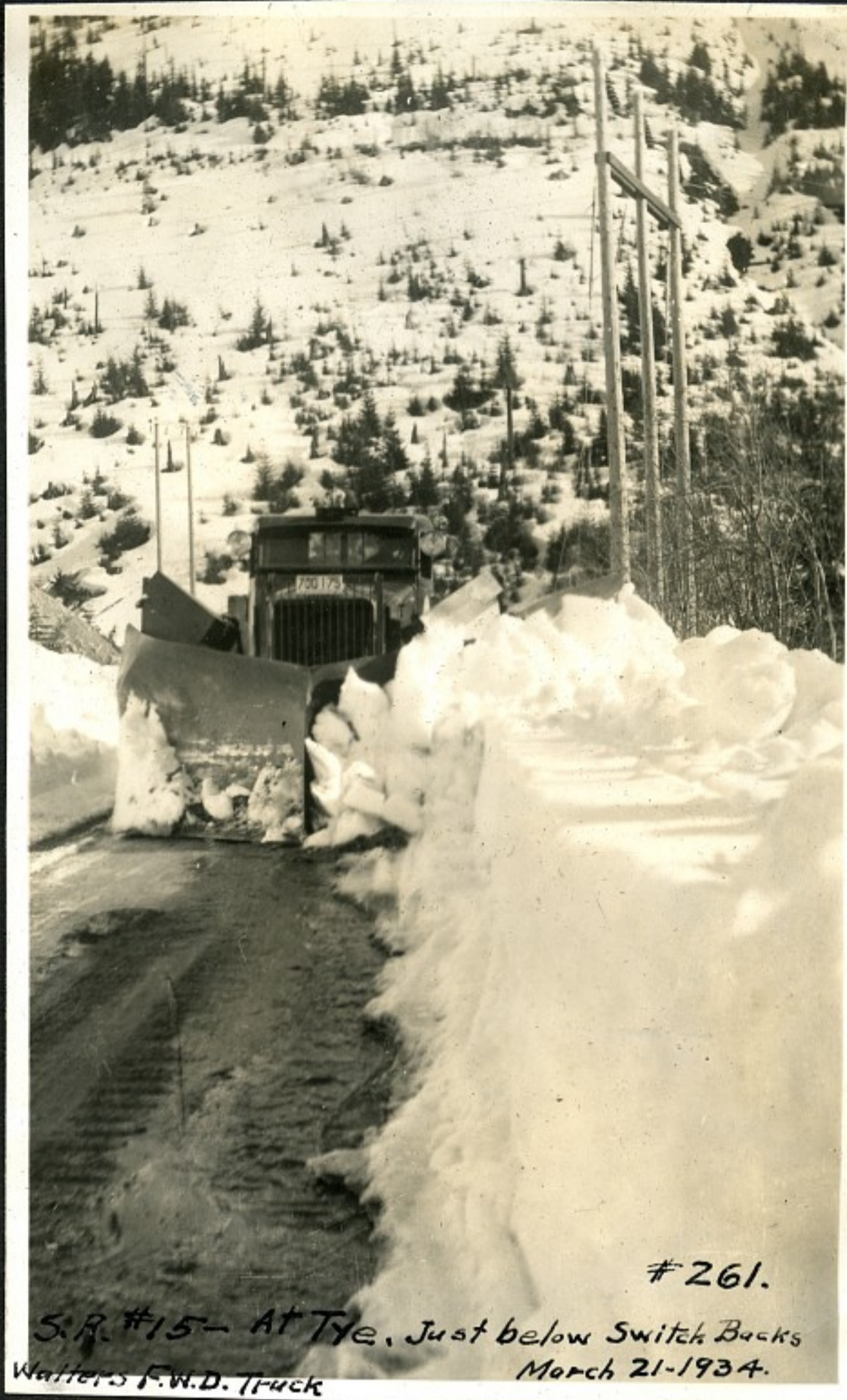


#255





#260
SR2-5709. Pass 3 mi. West
Feb. 21-1933



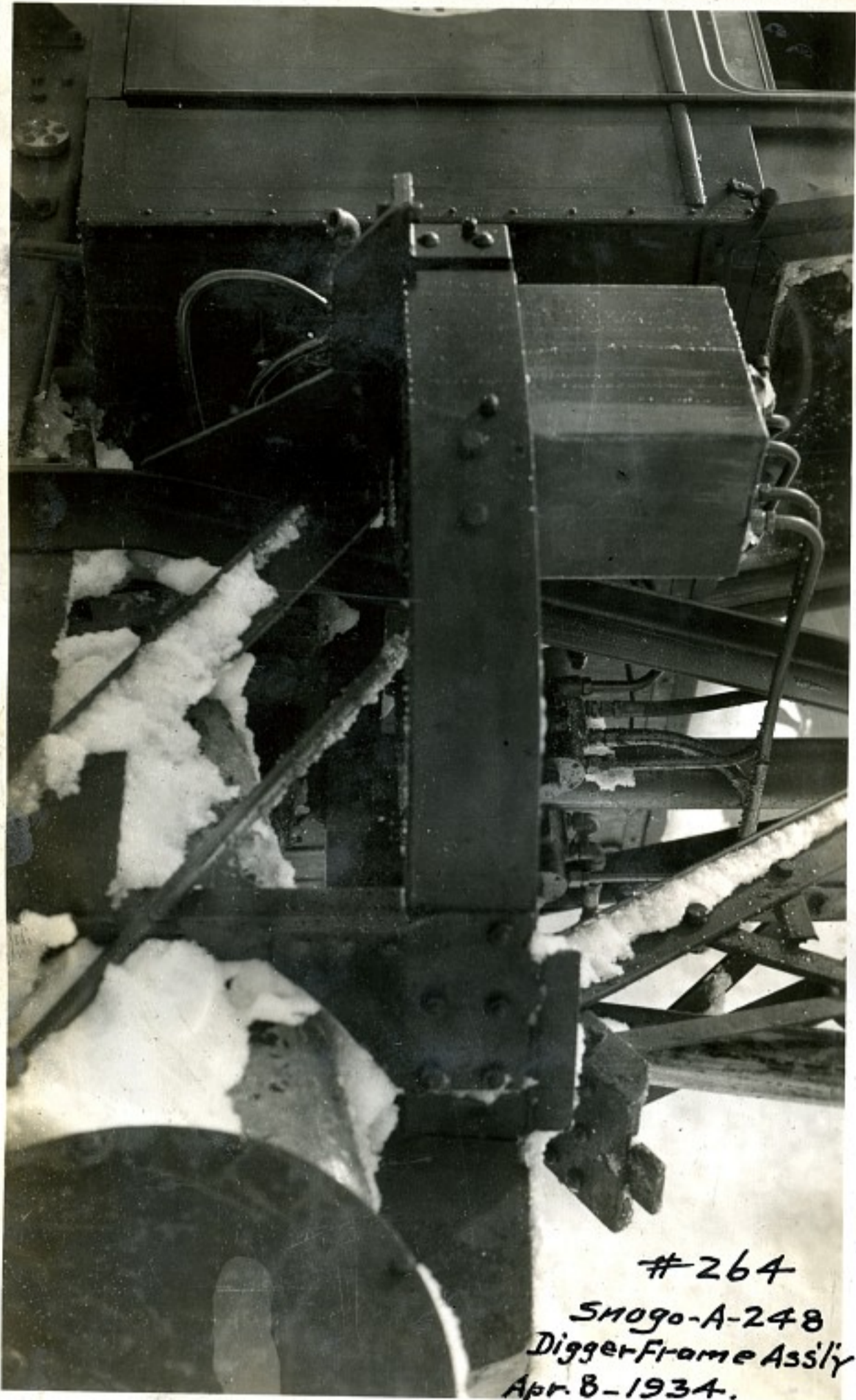
#261.
S.R. #15 - At Tye, Just below Switch Backs
Walters F.W.D. Truck March 21-1934.



S.R. #15 - At Tye Just below Switch Backs
Mch. 21-1934 Walters F.W.D. Truck
#262



#263
S.R. #15 - Slide at Scenic
20' deep
Mch. 23-1934



#264
Smogo-A-248
Digger Frame Assly
Apr. 8-1934.



Antenna System
Smogo-A-241.

#265



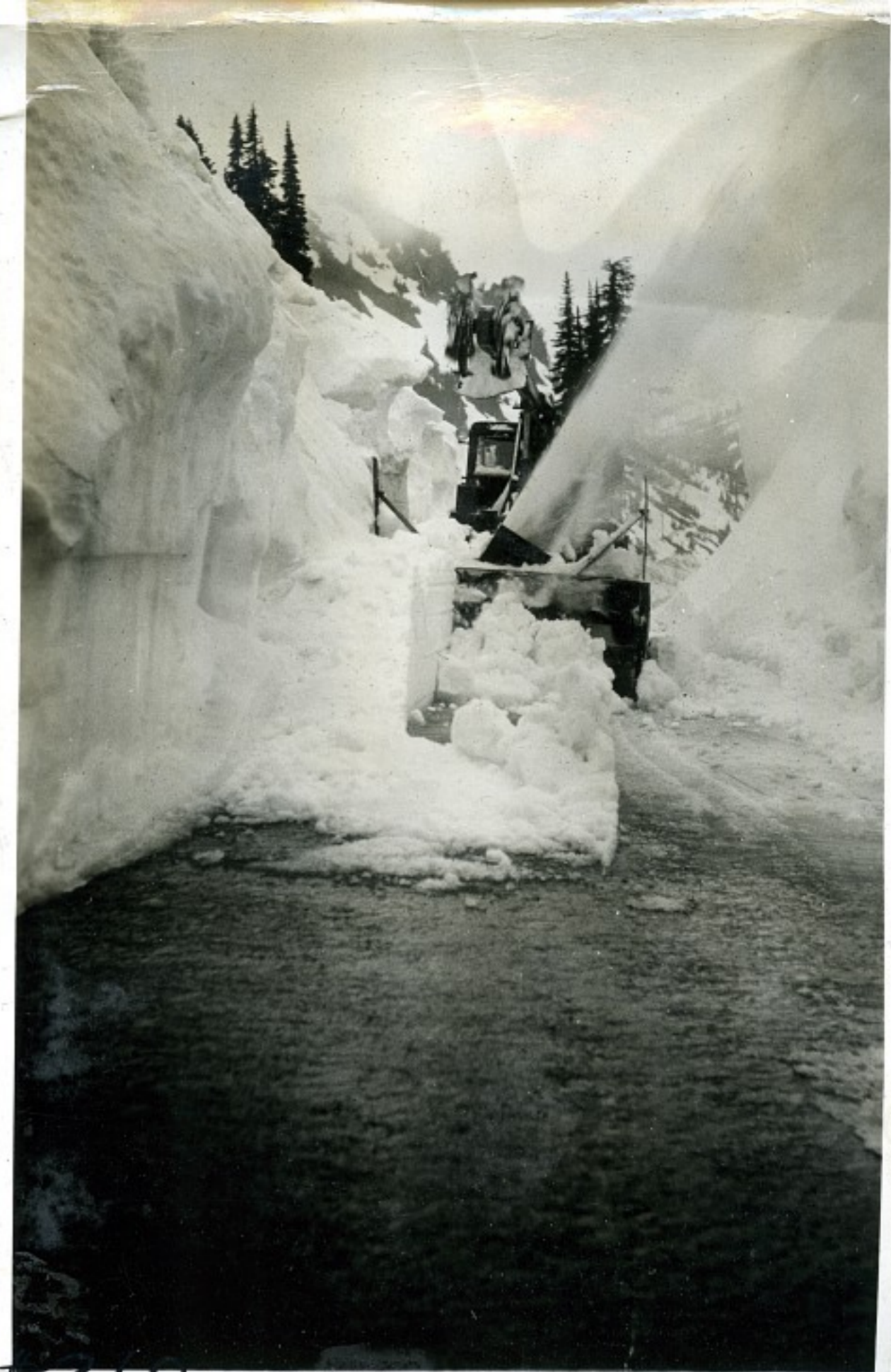
#266
S.R.#5-Smogo-A-248-1/4 Mile west of
Summit
Apr. 8-1934



#267
S.R.#5-1/4 Mile West of Summit
Apr. 8-1934



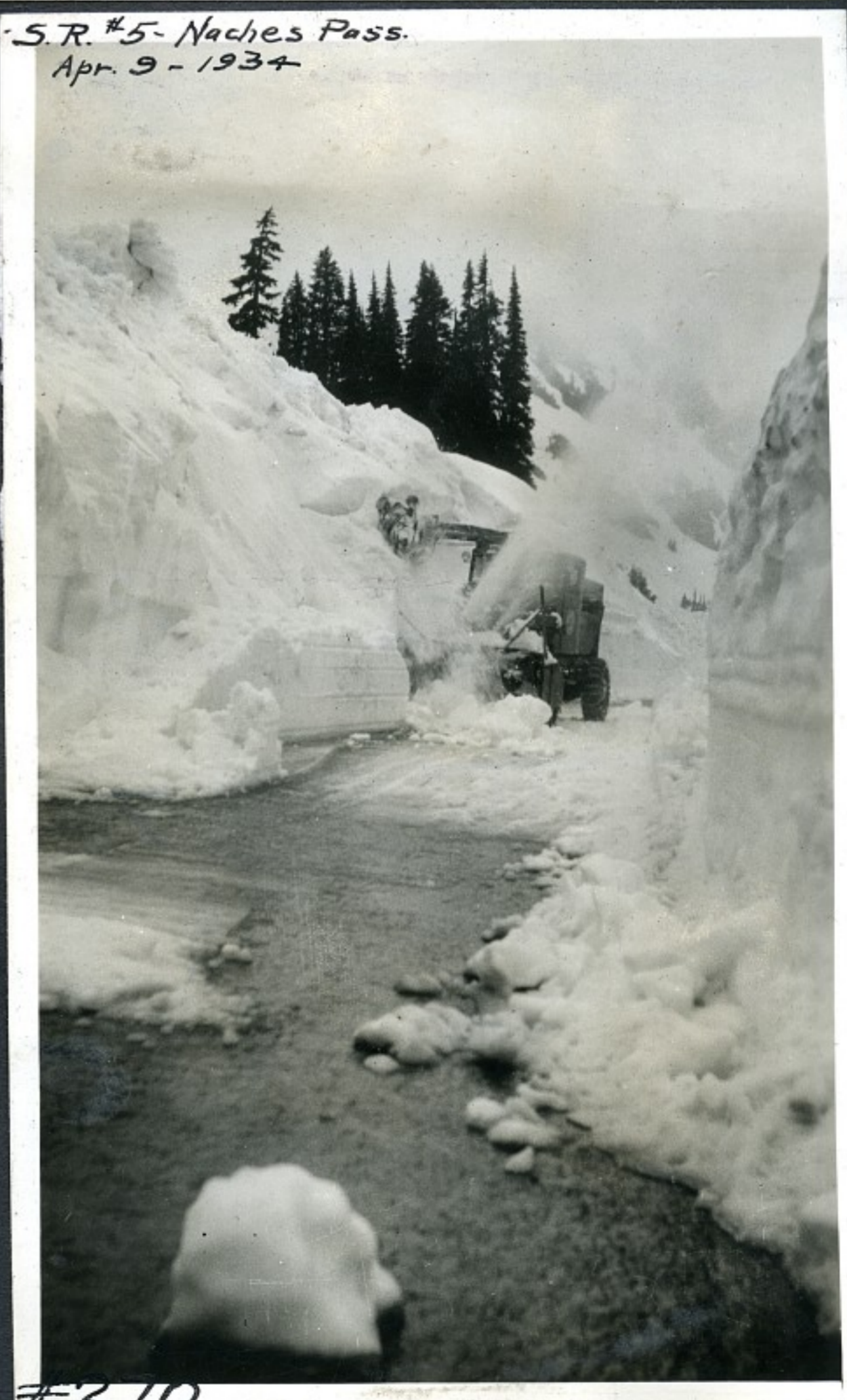
#268
S.R. #5 - 1/4 Mile West of Summit
Apr. 8 - 1934



#269
S.R. #5 - Naches Pass.
Apr. 9 - 1934



#271
{A-248
S.R. #5 - {Shogo} 1/4 Mile West of Summit
Chitook Pass.
Apr. 9 - 1934
Snow 12 ft.



#270

In Timber near Tye - 14 Mile Post - Mch. 20/34



S.R.#15

#272

S.R.#15 - In Timber near Tye - 14 Mile Post



#274

Mch. 20-1934



#273

S.R.#15 - In Timber near Tye - 14 Mi. Post
Mch. 20-1934



#275

S.R.#15 - In Timber near Tye -
14 Mile Post
Mch. 20-1934



S.R.#15 - Stevens Pass - just above second
Switch Back. Taken June 12-1933

#276

S.R.#15 - Stevens Pass - Just above Second Switch Back

S.R.#15 - Stevens Pass. near site of old Crusher Plant

#273

S.R. #15 - In Timber near Tye - 14 Mi Post
Mch. 20-1934

#275

S.R. #15 - In Timber near Tye -
Mch. 20-1934 14 Mile Post

S.R. #15

#276

S.R. #15 - Stevens Pass - Just above Second Switch-Back



#277

June 12-1933

S.R. #15 - Stevens Pass, near site of old Crusher Plant



#278

June 12-1933

S.R.#15 - Stevens Pass, about 1/2 Mi east of 2nd switchback



#279

June 12-1933

S.R.#15 - Stevens Pass - Slide at Upper Scenic near Pond.



6/5-33

#280

S.R.#15 - Stevens Pass about Midway between Scenic & Tre.



#281-

6/12/33



S.R.#15 - Stevens Pass, Just above second switch-back

6/12/33

#282

S.R.#15 - Stevens Pass, Just above second switch-back above sky.



#283

6/12/33

S.R.#1 - Walters Truck on Mt Baker Highway. Shucksant Lodge - Dec. 1934.

#284

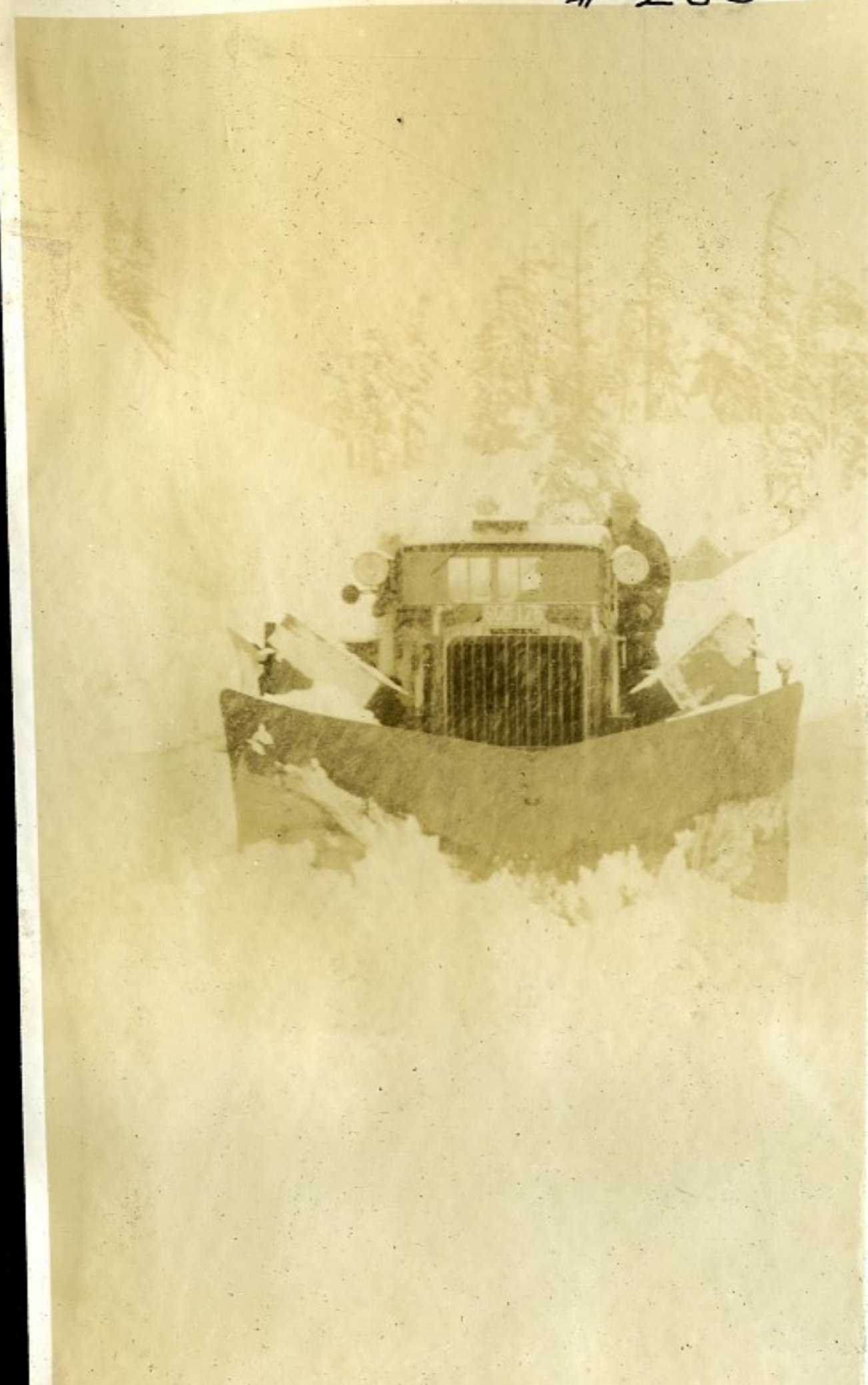


285.



S. R. #1. - Walters Truck on
Mt Baker Highway
Shucksan to Lodge - Dec. 1934.

286



S. R. #1. - Walters Truck on
Mt Baker Highway
Shucksan to Lodge. Dec. '34

287



S. R. #1. Mt Baker Highway
Shucksan to Lodge.
Mch. 29 - 1935.



#288

Mt Baker Highway.
Shuchman to Lodge
Feb. 29-1935



#289

S.R.No.5—Slides above Park Y—Showing Brush & Trees—Jan. 1935.



#289

S.R.No.5.—Slides above Park Wye—Showing Brush & Trees—Jan. 1935.

Snoqualmie Pass Summit.
Mch. 1935.

#290



S.R.M. - Looking East from Summit, Snoq. Pass Feb. 3-'35.

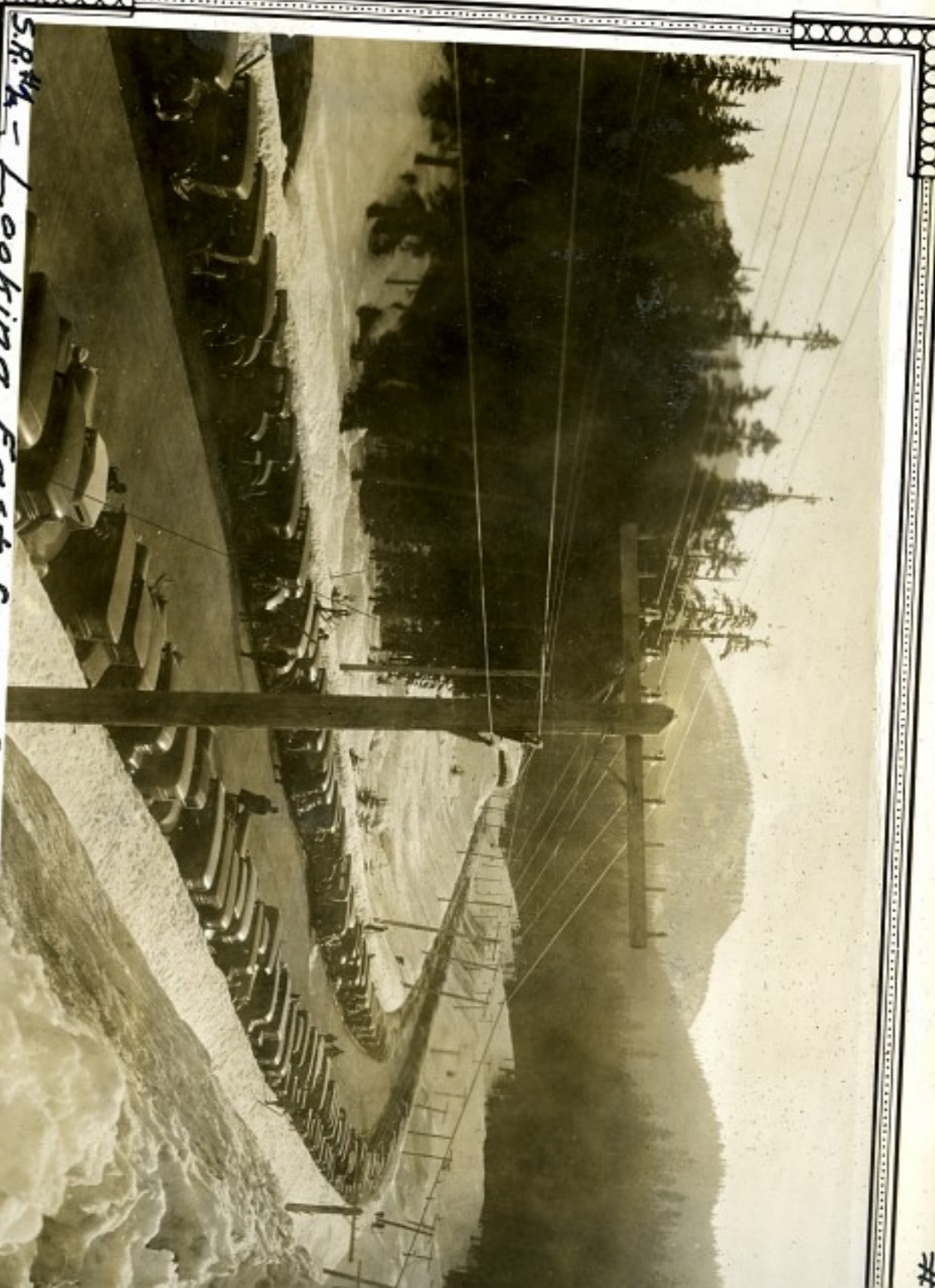


S.R.M. - Summit - Snoq. Pass Feb. 3-1935.



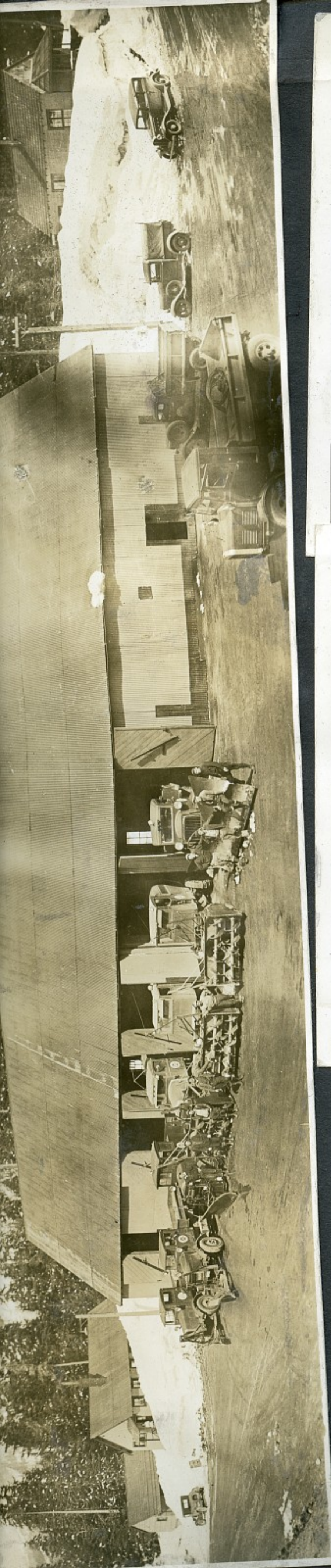
#2

S.R.M. - Looking East from Summit Snoq. Pass - Feb. 3-'35



#

#



291.



S.R. #4 - Looking East from Summit, Snog. Pass - Feb. 3 - '35.

292.



S.R. #2 - Summit - Snog. Pass Feb. 3 - 1935.

293



S.R. #2 - Looking East from Summit, Snog. Pass Feb. 3 - '35.

#295.



S.R.M. - Summit - Snog. Pass. Febr. 3-1935.

#294.



S.R.M. - Looking West from Summit. Snog. Pass Feb. 3-1935.

#296



S.R.M. - Summit Inn - Snog. Pass - Feb. 3-1935.

#298.



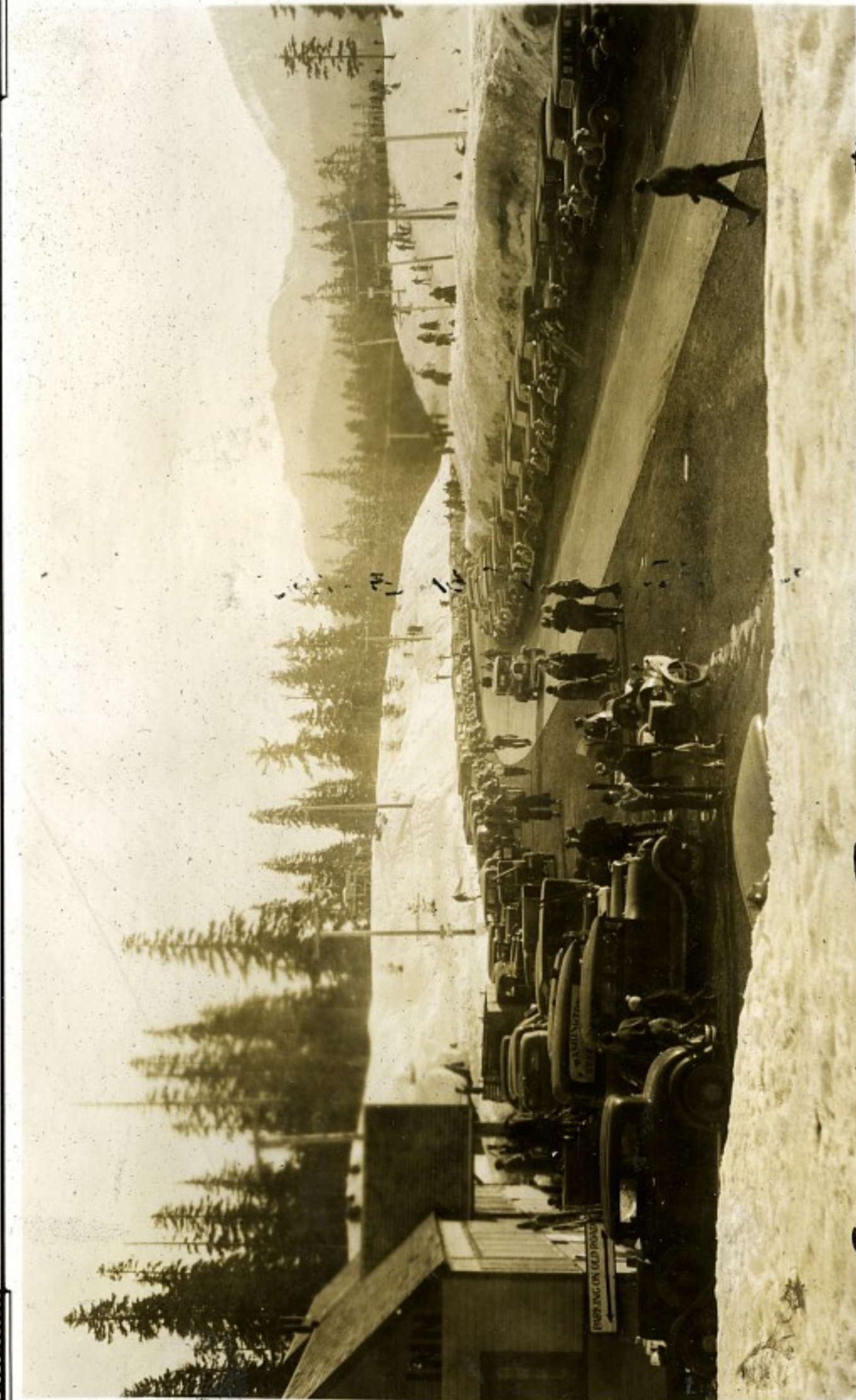
Ski Slide across Road from Summit Inn - Feb. 3-1935. S.R.#2

#297.



S.R.#2 - Looking East from Summit. Snow Pass Feb. 3-'35

#299



Summit-Snow Pass - Febr. 3-1935. S.R.#2

302



SNOG. Pass.
SNOW Equipmt. Febr. 11-1935.

S.R.#2

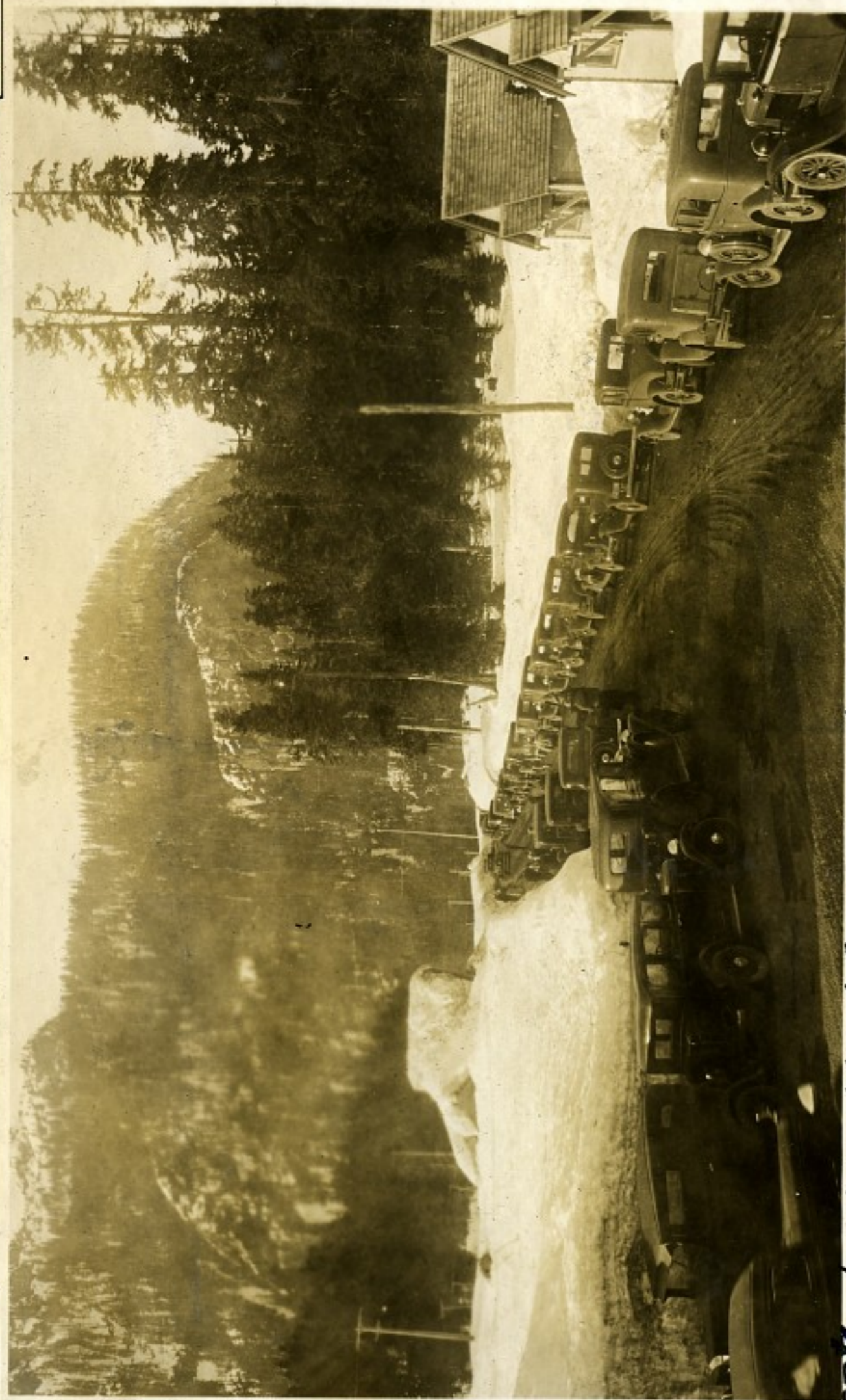
301.



SNOG. Pass.
SNOW Equipmt. & Camp. Febr. 11-1935.

S.R.#2

300



S.R.#2 Looking West from Summit on old Road. Febr. 3-1935.

305



Snoqualmie Pass.
 SNOW Equipmt. Febr. 11-1935.

S.R.#2

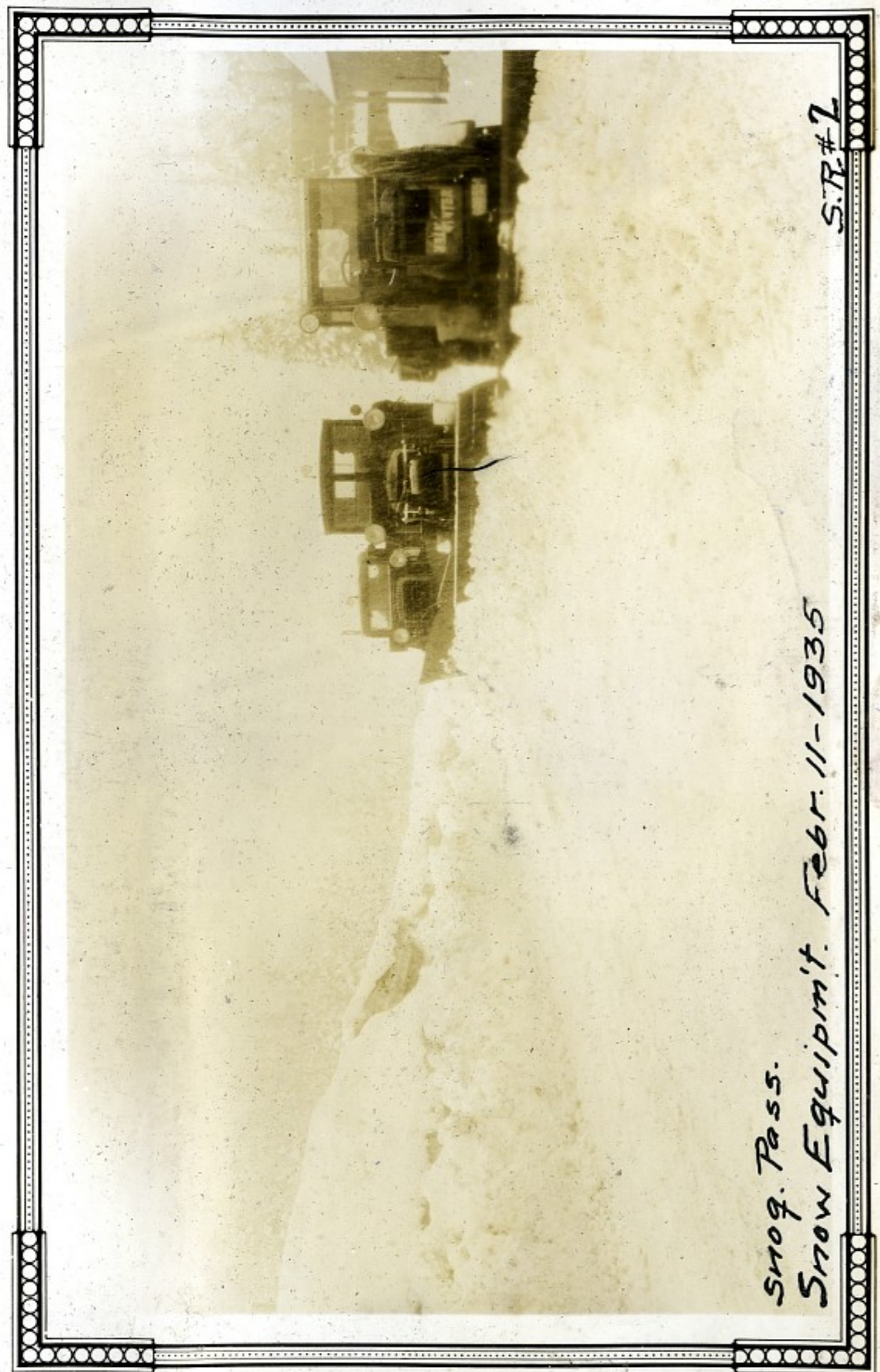
304



Snoqualmie Pass.
 SNOW Equipmt. & Camp Febr. 11-1935.

S.R.#2

303.



Snoq. Pass.
 Snow Equipmt. Febr. 11-1935

S.R.#1

306



Snoqualmie Pass.
Snow Equipmt & Camp Febr. 11-1935.

S.R.#2



Snoqualmie Pass
Febr. 11-1935- Snow Equipmt.

S.R.#2

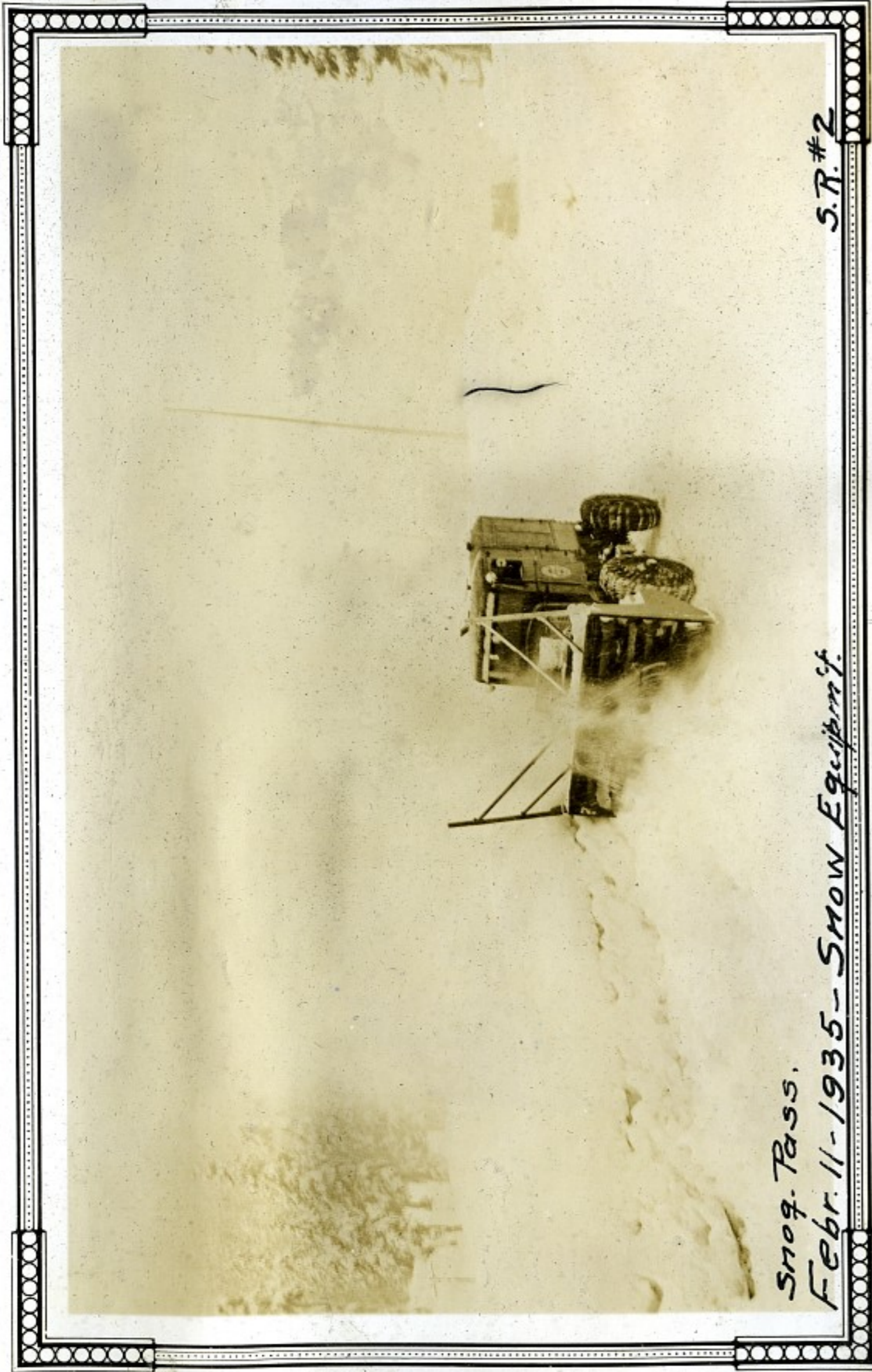
307



Snoqualmie Pass.
Snow Equipmt & Camp - Febr. 11-1935.

S.R.#2

309



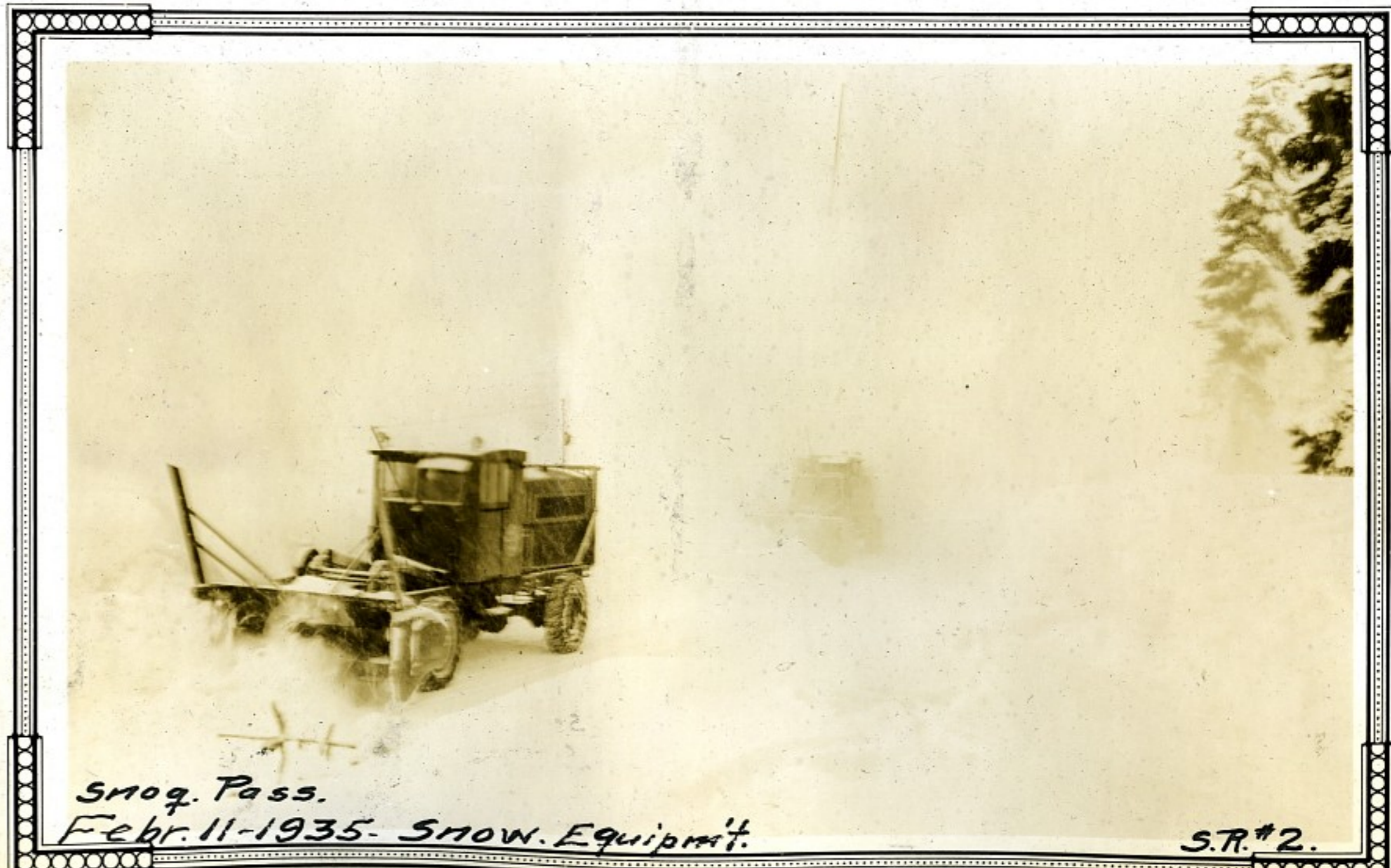
Snoq. Pass.
 Febr. 11-1935 - Snow Equipmt.
 S.R.#2

311.



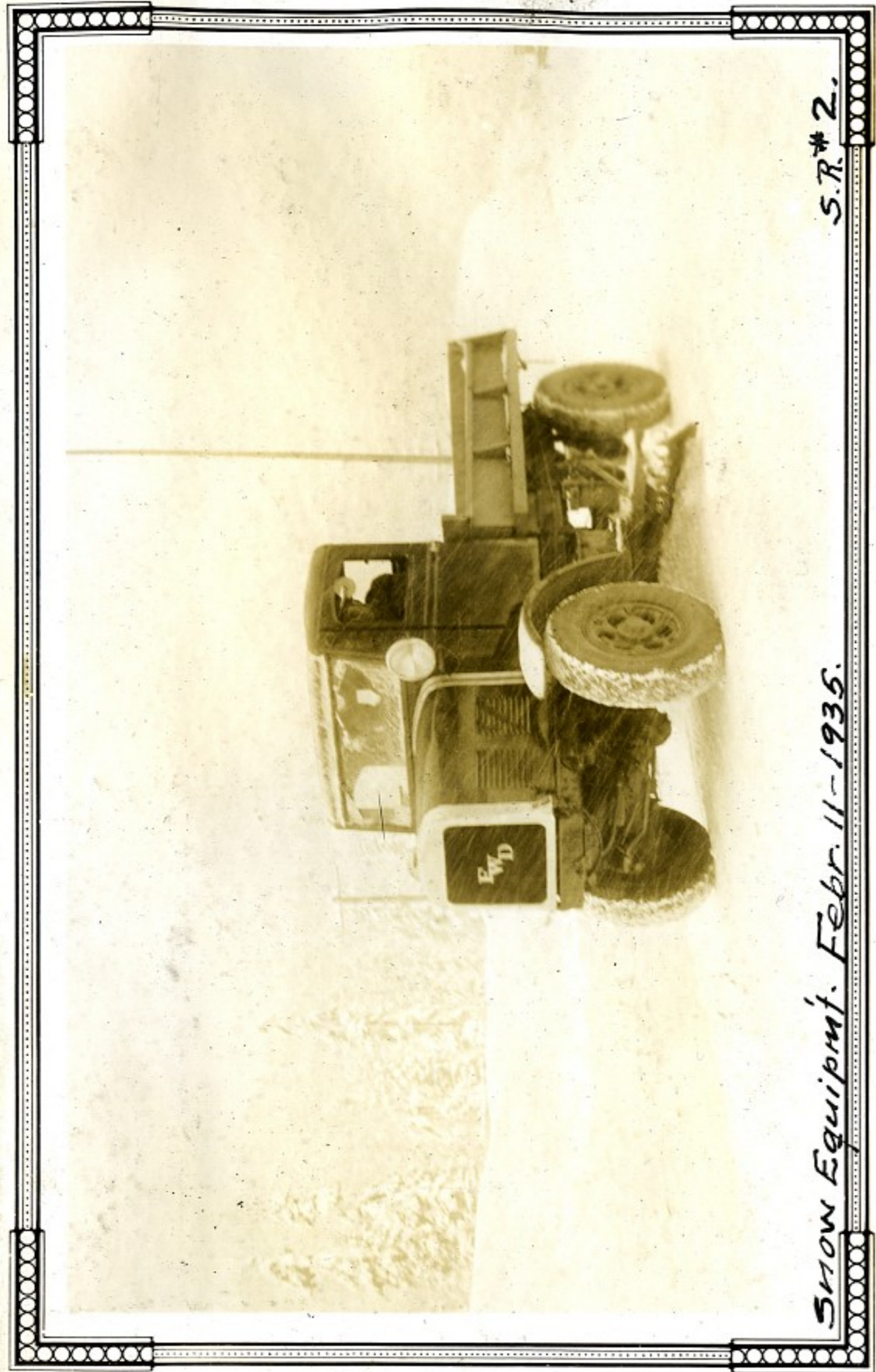
Snoq. Pass.
 Febr. 11-1935 - Snow Equipmt. & Camp.
 S.R.#2

310



Snoq. Pass.
 Febr. 11-1935 - Snow Equipmt.
 S.R.#2

312.



Snow Equipmt. Febr. 11-1935.

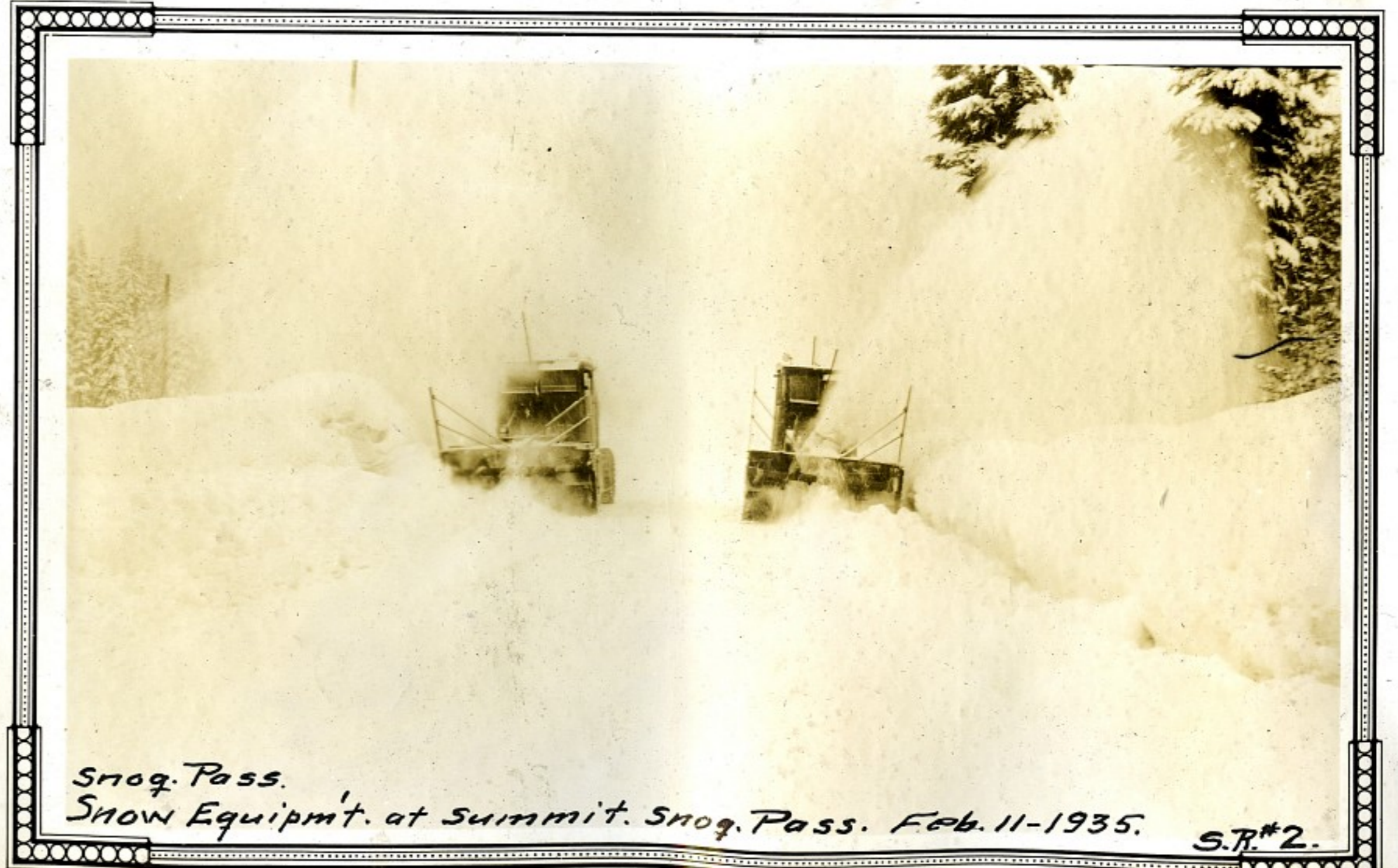
S.R.# 2.



SR 5 - May 1935

314

313.



Snow. Pass.
Snow Equipmt. at Summit. Snow. Pass. Febr. 11-1935.

S.R.# 2.



S.R. 5 May 1935

315



S.R. 5 May 1935

316



S.R. 5 - May 1935

317



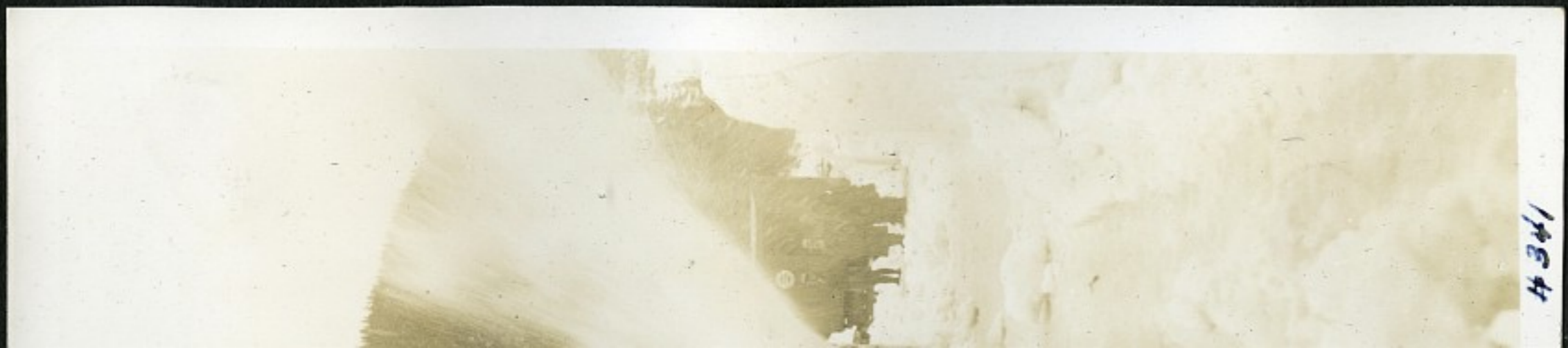
STR2-2/28/36 #338



STR2-2-28/36 #339



STR2-2/28/36 #340



#341



SR2-2/28/36

#341

SR2-2-28/36

#339



SR2-2/28/36





STR2-2/28/36

343

STR2-2/28/36



STR2-2/28/36





STR2 - 2/28/36

342



343



STR2 - 2/28/36

345



STR2 - 2/28/36

344



SR5 May 1935

#318



#320

SR2-1/9/36



#319

SR15 1/2 mi. East of Tye River

Watters & plow Jan-17-1936



STR2-1/9/36

321



SR No 2 (Road to Summit Camp Jan 1936

322



STR2-Jan. 1936

323



SR No. 2 Old Road - Jan 1936

324



SR2 - 1/9/36

325



SR2 - 1/9/36

326



572-247-1936

328



572-247-1936

327



572-247-1936

329



SR2-2/28/36

#332



SR2-2/28/36

#333



#331

SR2-2/28/36



SR No1 - South of Everett Feb 6, 1936

#330



SR2-2/28/36

334



SR2-2/28/36

335



SR2-2/28/36

337



SR2-2-28/36

336



SR2-2/28/36

346



SR2-3/28/36

#347



SR2-3/28/36

348



349

346



SR2-3/28/36

347

SR2-3/28/36

SR2-2/28/36

349



SR2-2/28/36

#350



SR2

2/29/36

#352



SR2-2/29/36

#353



350

SR2

2/29/36

352

SR2-2/29/36



351

SR2-2/28/36



SR2-2/29/36

#354



SR2-2/29/36

#355



SR2-2/29/36

#356



#357



SR2 - 2/29/36

357

354

SR2 - 2/29/36

355

SR2 - 2/29/36



SR2-2/29/36

358



SR2-3/1/36

359



SR2-3/1/36

360



361



SR2-3/1/36

361

358

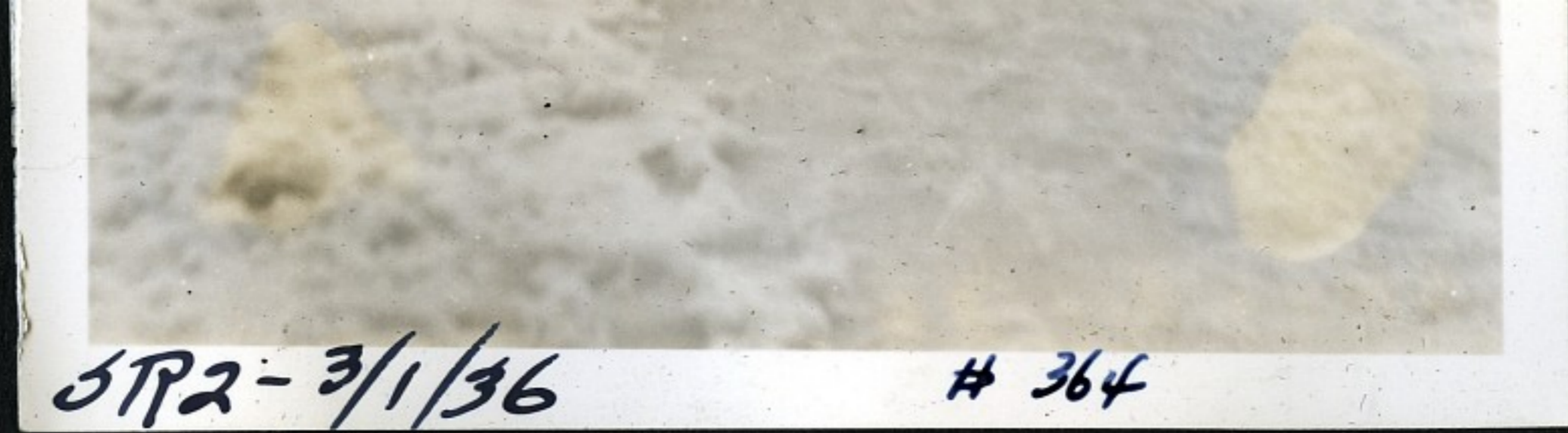
SR2-3/1/36

359

SR2-3/1/36

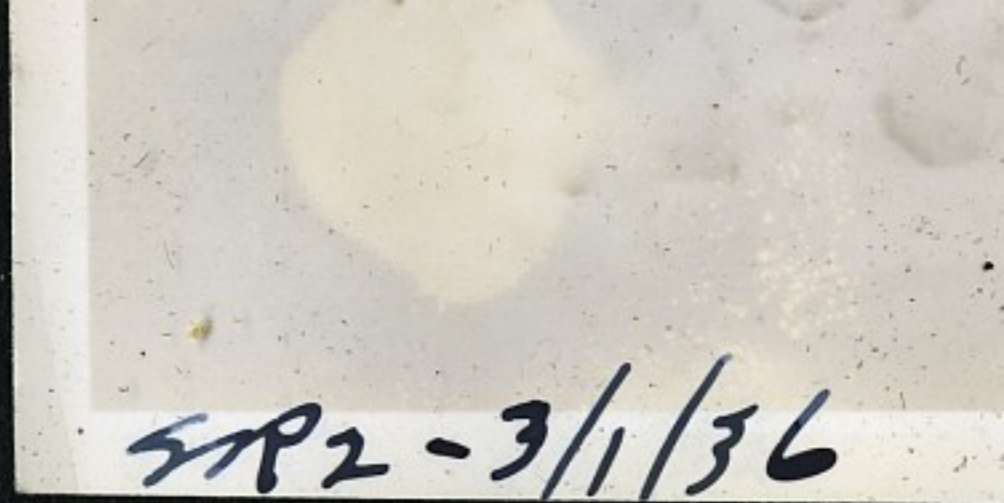


363



STR2-3/1/36

364



STR2-3/1/36



STR2-3/1/36

362



STR2-3/1/36

363



STR2-3/1/36

364



STR2-3/1/36

365





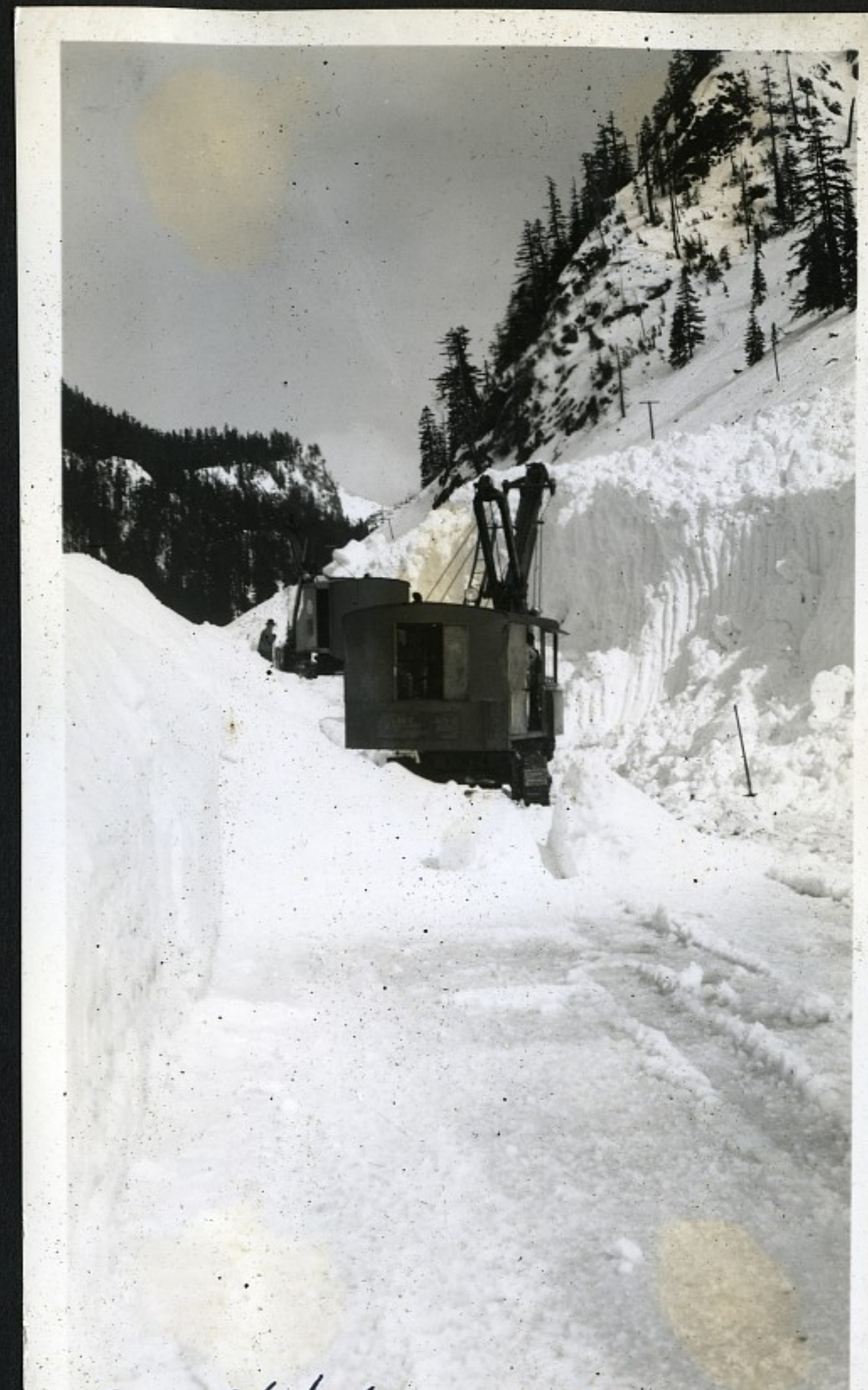
SR2-3/1/36

#366



SR2-3/1/36

#367



SR2-3/1/36

#368

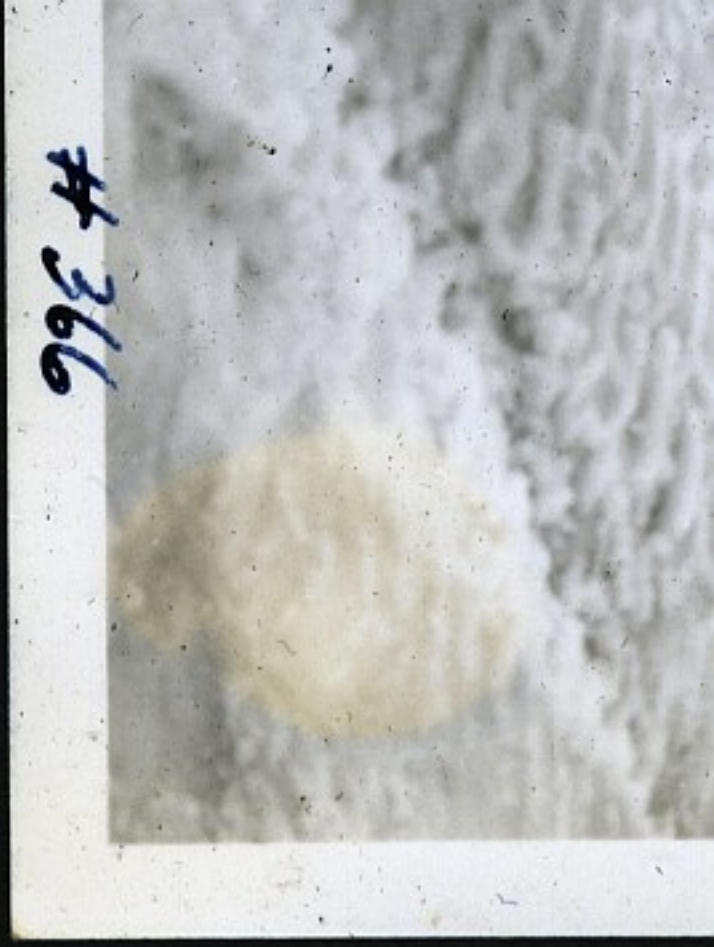


#369

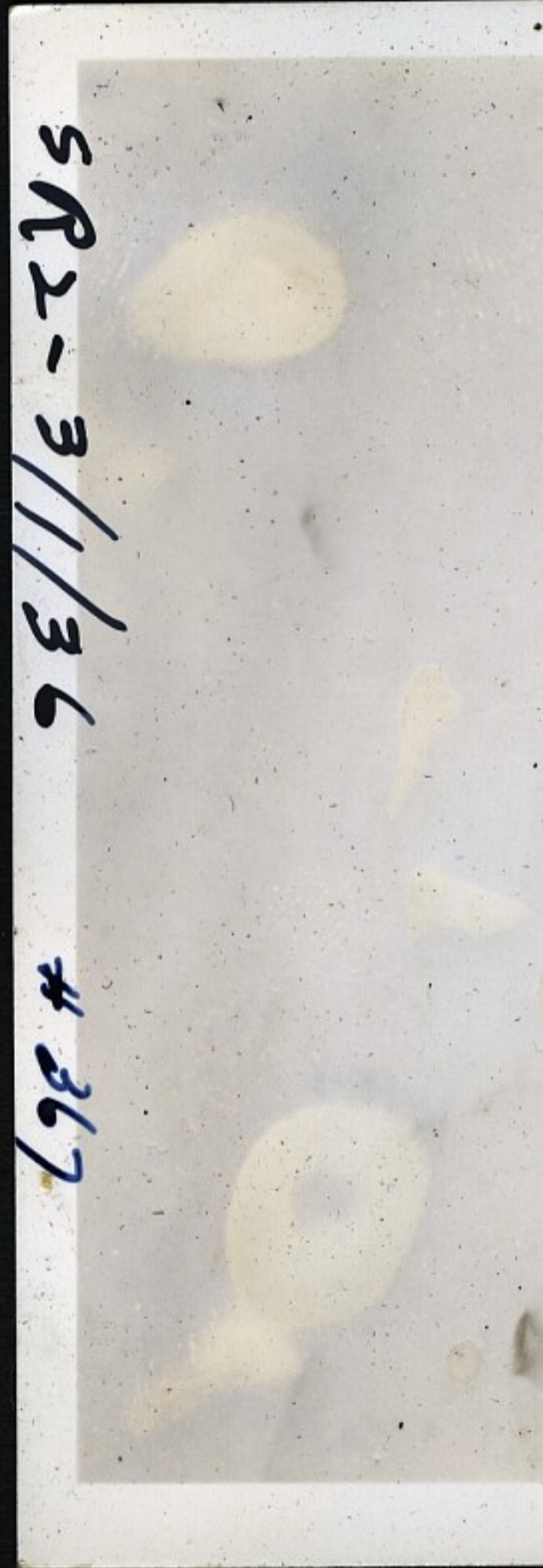


SR2-3/1/36

369

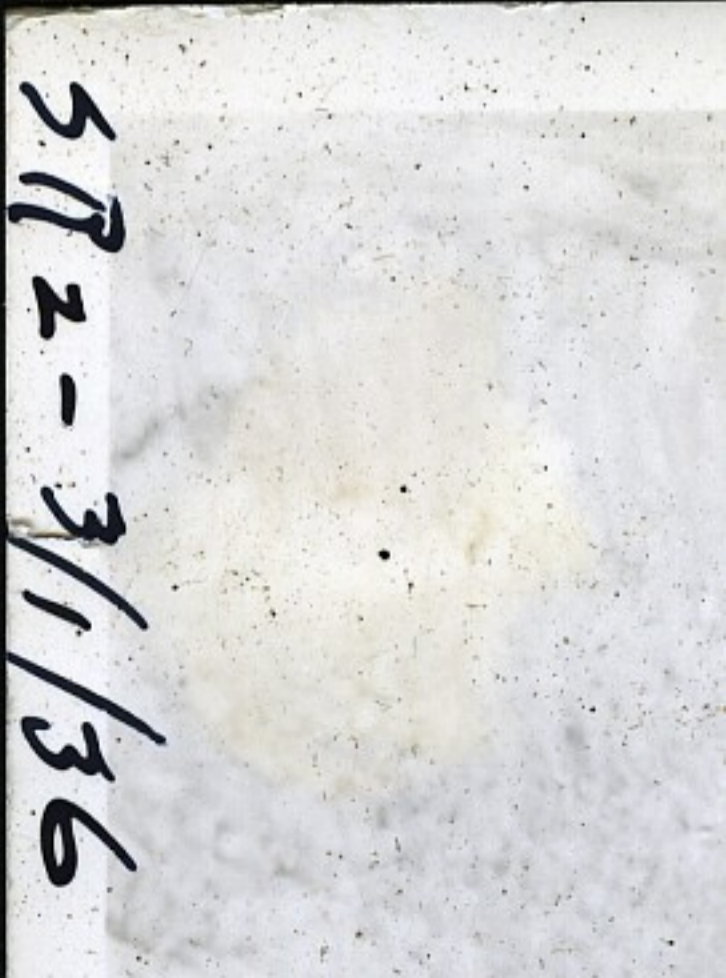


366



SR2-3/1/36

367



SR2-3/1/36



SR 2 - 3/1/36 # 370

371



SR 5 Just East of Coyuse Pass 12-10-36

372



MAR-6-1938 Snow Summit

373



370

SR 5 Just East of Coyuse Pass 12-10-36

313



SNOG. Summit MAR-6-1938

#371



Mar. 6-1938 - Snow Summit

375



Snow Summit Mar. 6-1938

374



Snow Summit Mar. 6-1938

376



Snoq. Summit MAR. 6-1938



Snoq. Summit MAR. 6-1938

378



Snoq. Summit MAR. 6-1938

377



Snoq. Summit MAR. 6 - 1938

376



378



379



Snoq. Summit MAR. 6-1938

381



Snoq. Summit MAR. 6-1938

380



Snoq. Summit MAR. 6-1938

382



Snoq. Summit 2-27-38

383



Snoq. Summit 2-27-38





384



Snoq Summit. 2-27-38

385



2-27-38

387



Snoq. Summit 3-6-38

386





2-27-38



Snoq. Summit 3-6-38



386

Snoq. Summit 3-6-38

388



Snoq. Summit 3-6-38

#389
PSH 15
Snow Re



3-6-38



#389
PSH 15
SNOW REMOVAL APR. 1939



#390
PSH 15
SNOW REMOVAL
APR. 1939



#391
PSH 15
SNOW REMOVAL
APR 1939



#392
PSH 15
SNOW REMOVAL
APR 1939



#393
PSH 15
SNOW REMOVAL
APR. 1939



#394
P.S.H. 15
SNOW REMOVAL
APR. 1939



#395
P.S.H. 15
SNOW REMOVAL
APR. 1939



#396
P.S.H. 15
SNOW REMOVAL
APR. 1939



#397
PSH 15
Snow Removal
Apr. 1939



#399
PSH 15
Snow Removal
Apr. 1939



#398
PSH 15
Snow Removal
Apr. 1939



#400 PSH 15 - Snow Removal APR 1939



#401
PSH 15
Snow Removal
Apr 1939



#402
PSH 15
Snow Removal
Apr. 1939



#403
PSH 15
SNOW REMOVAL
APR. 1939



#404
PSH 15
SNOW REMOVAL
APR. 1939



#405
PSH 15
SNOW REMOVAL
APR. 1939



#406
PSH 15
SNOW REMOVAL
APR. 1939



#408
PSH 15
SNOW REMOVAL
APR. 1939



#407
PSH 15
SNOW REMOVAL
APR. 1939



#409
PSH 15
SNOW REMOVAL
APR. 1939



#410



#411

PSH-1 - Austin Pass End of Road Aug - 2 - 1939

8 5 39



#413
PSH. 5 Slides 1.5 mi east of Park Y
Jan. 4, 1938



#412
PSH. 5 - Big Bertha Slide
Jan. 4 - 1938
 $\frac{1}{4}$ mi. east of Park Y









