

THE condition of Rex Beach, the author, who is at the Seattle General Hospital suffering from an affliction of the eyes, is about the same, according to a statement given out this morning by the nurses at the hospital.

# BOYS CARRIED TO SUMMIT OF RAINIER

July 31  
1908

DECLARING that they could not go another step when within 200 yards of the summit of Mount Rainier because of exhaustion, Otis Hardee and E. E. Churchill, the only members of the recent Y. M. C. A. expedition that climbed the lofty peak who showed symptoms of succumbing to the hardships incident to the journey, were carried the remaining distance on the shoulders of their companions. According to members of the party that returned a few days ago, the young men were carried up simply to make good the boast that the whole party of twenty-five would make the ascent.

Before the expedition started every man was sounded by a physician, and each was declared to be in condition. All went well until the party was almost at the summit of the mountain, when the two youths exclaimed that it was impossible for them to go on.

"To leave them there would be to acknowledge we had promised too much when we said the whole party would make good," said Ethan S. Smith, the leader of the party, "so we determined that they would come, even if we had to carry them, and we did. They were limp and were in such a condition that we were actually afraid that they would not get back alive. They are perfectly well now, however, and are not sorry that they made the trip."

The following young men were in the expedition:

C. S. Downes, Otis Hardee, C. E. Kent, Will G. Taft, L. U. Gardner, A. A. Burns, Percy Peters, Charles Norman, J. W. Gooderham, C. D. Folrich, Arthur Bryant, E. P. Duddy, H. G. Venema, K. K. Burkhardt, Dean Hawley, L. E. Doser, J. J. Scott, Helge Helgeson, W. G. Fortner, E. E. Churchill, Henry Smith, George Wheeler, Kenneth Redman, W. S. Hillman and Ethan S. Smith.

Killed by Threshing Machine.

# Y. M. C. A. PARTY TO CLIMB RAINIER

July 1908

Large Body of Young Men to Attempt to Scale Dizzy Heights of Seattle's Favorite Mountain Peak.

Will Leave Next Wednesday for Scene of Endeavor—Only Persons in Good Physical Condition Allowed to Go.

Mount Rainier is to be scaled by a large party under the leadership of Ethan S. Smith, this week. The men who will undertake this feat will leave the city Wednesday morning and they declare they are physically fit to accomplish the task. Of a party of twenty-eight that tried to reach the summit last year under the pilotage of Mr. Smith, only four failed.

The men to take the trip have each submitted to a thorough physical examination by a competent physician and he declares that if they are not able to make the journey successfully it will be for other than constitutional reasons. More men than the number going wanted to join the aggregation, but they were not considered.

"It would be wrong for us to permit any man to accompany us unless he is in the best of condition," said Mr. Smith, the leader of the expedition. "Some of the men have been in training for this event for the past three months and have gone through their exercises just as faithfully as if they were preparing for a fight to a finish with the gloves, or a wrestling match."

The following are the members of the mountain climbing party:

C. S. Downes, Otis Hardee, C. E. Kent, Will G. Taft, L. U. Gardner, A. A. Burns, Percy Peters, Charles Norman, J. W. Gooderham, C. D. Folrich, Arthur Bryant, E. P. Duddy, H. G. Venema, K. K. Burkhardt, Dean Hawley, L. E. Doser, J. J. Scott, Helge Helgeson, W. G. Fortner, E. E. Churchill, Henry Smith, George Wheeler, Kenneth Redman, W. S. Hillman and Ethan S. Smith.

# MINISTERS PREPARE

THE  
concert  
of the  
Thirty-  
Streets.  
The

# JON





















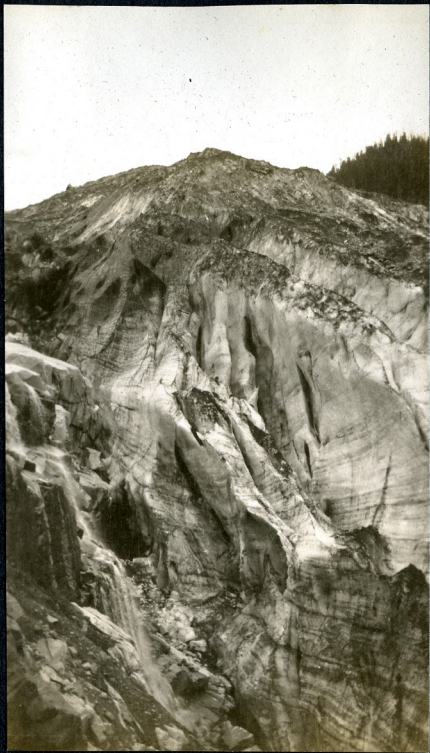
















THE  
LIBRARY  
OF THE  
MOUNTAIN  
MUSEUM  
AT  
MOUNTAIN VIEW  
NEW YORK



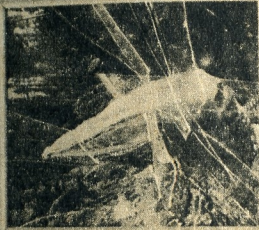


## ORIGIN OF NARADA FALLS

### MOUNT RAINE'S LAVAS

The rock formation on which the water is falling is made up of a lava flow from Mount Rainier when it was active.

This lava is an andesite similar to the Kechelus but darker. It occupies an area that was formerly an old valley. Notice the way in which the lava formed six-sided columns as it cooled. This characteristic permits the waterfall to undercut its base easily.



### KECHELUS ANDESITE

The rock on this side of the canyon is part of the old Cascade Mountain Range, and is much older geologically than the noticeably blacker lava rock on the opposite wall. This rock is the result of a lava flow dating several million years ago. It covered this region to a depth over 2,000 feet. The Tolovash Range to the south is largely Kechelus andesite.

When the Rabaul lavas came in contact with older Cascade lavas the Paradise River was able to erode rapidly downward, cutting its canyon between the two formations. Later as the Paradise Glacier advanced, then upon its retreat it diverted the river from its old channel and forced it into the present stream bed forming the 166 foot waterfall.























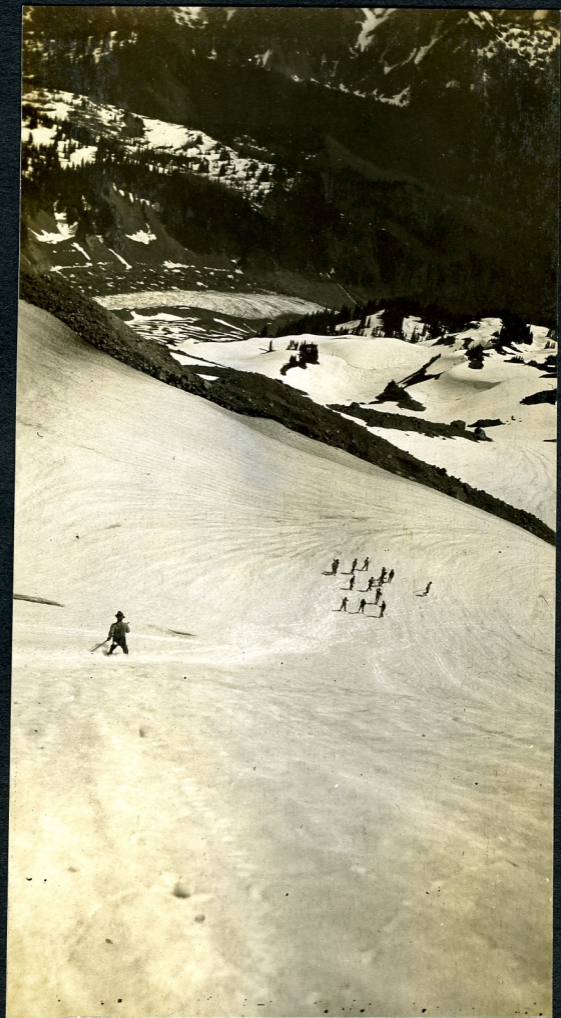










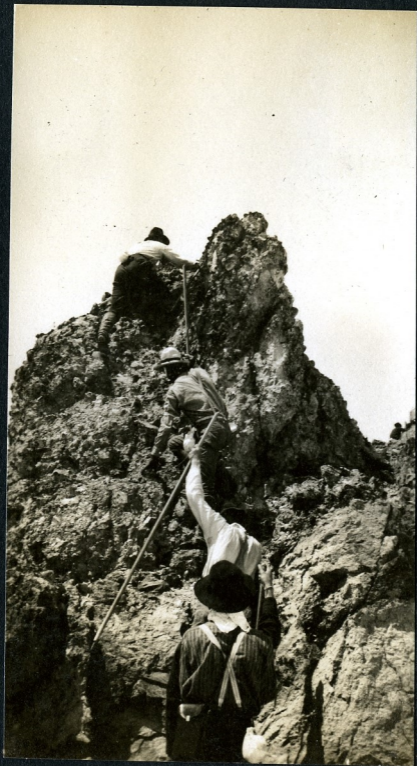












































































































QUALITY CANYON



© 1937  
ROMANS PHOTO CO.

TATTOOSH RANGE  
PARADISE VALLEY

Falls of the Upper Paradise River,  
Washington.



Fairy Falls, Cowlitz River,  
Washington.





Navada Falls, 175 Ft., Washington.



Tatoosh Peaks, Paradise (Valley) Park, Washington.





— CRATER OF MT. RAINIER —

1899

August 1908



Tacoma Daily News, Saturday, July 25, 1908:

"Seventeen sunburned but happy young men returned to Tacoma this afternoon after ten days with the YMCA climbers on Mount Tacoma.

The ascent to the top of the mountain was made Thursday by 24 of the party. The start from Paradise Valley was made at 3 a.m. The Seattle party of 22 went an hour before.

"Jules Stampfler acted as guide for the Seattle men and Charles Glidden, one of the local party, guided the Tacomans.

"The summit was reached at 1:30 p.m. and the descent was begun an hour and a half later. It was very cold on the top and the wind was terrific. The day was clear, however, and it was possible to see eight snow capped peaks. After registering the climb to Columbia Crest, the high point was made.

Camp Muir was reached on the return trip at 6:45 and the valley at 8:30. A few rocks were encountered at Gibraltar Rock but no one was injured. The YMCA banner was photographed at the top of the mountain.

"Secretary Nevius returned with some of the party this afternoon. Others will return Tuesday. The second association party will leave for the mountain Thursday in [the] charge of Secretary Nevius. A second party of Seattle association climbers left yesterday.

"Those who made the climb were C. F. Nevius, G. Q. LeSourd, C. A. Glidden, Roger W. Watts, B. O. Bendixen, J. C. Bell, J. S. Girard, Warren Cuddy, Daniel Thompson, Rev. J. S. Wallace, E. J. Baker, A. W. Bair, Roscoe Renfro, Fred Nicholson, J. H. Burling, H. J. Sontag, R. T. Brittain, L. M. Feller, J. F. Moser, C. A. Sawyer, Edwin Parker, A. F. Erickson and Charles W. Wilcox."

The Tacoma Ledger, July 26, 1908:

"YMCA mountain climbers end trip. Party of twenty-four succeed in making the ascent of Mount Tacoma."

"Mount Tacoma has been conquered by twenty-four more Tacomans, seventeen of whom arrived in the city yesterday after their climb. The ascent was made on Thursday under the guidance of Charles Glidden. The Seattle party which preceded the one from Tacoma was in the charge of Jules Stampfler.

"In spite of the extreme cold and the high wind encountered at the top, the party voted the trip well worth the discomfort. The members had views of eight snow covered peaks around them, had a picture of their banner taken and then came down again. The second party will leave for the mountain on Thursday.

"Those who made the climb were C. F. Nevius, G. Q. LeSourd, C. A. Glidden, Roger W. Wattis, B. O. Bendixen, J. C. Bell, J. S. Girard, Warren Cuddy, Daniel Thompson, Rev. J. S. Wallace, E. J. Nicholson, J. H. Burling, H. J. Sontag, R. T. Brittain, L. M. Feller, J. F. Moser, C. A. Sawyer, Edwin Parker, A. F. Erickson and Charles W. Wilcox."

The Seattle Times, July 31, 1908:

"Boys carried to summit of Rainier."

"Declaring that they could not go another step when within 200 yards of the summit of Mount Rainier because of exhaustion, Otis Hardee and E. E. Churchill, the only members of the recent YMCA expedition that climbed the lofty peak who showed symptoms of succumbing to the hardships incident to the journey, were carried the remaining distance on the shoulders of their companions.

"According to members of the party that returned a few days ago, the young men were carried up simply to make good the boast that the whole party of twenty-five would make the ascent.

"Before the expedition started every man was sounded by a physician and each was declared to be in condition. All went well until the party was almost at the summit of the mountain when the two youths exclaimed that it was impossible for them to go on.

"To leave them there would be to acknowledge we had promised too much when we said the whole party would make good," said Ethan S. Smith, the leader of the party, "so we determined that they would come, even if we had to carry them, and we did.

"They were limp and were in such a condition that we were actually afraid that they would not get back alive. They are perfectly well now, however, and are not sorry that they made the trip."

"The following young men were in the expedition: C. S. Downes, Otis Hardee, C. E. Kent, Will G. Taft, L. U. Gardner, A. A. Burns, Percy Peters, Charles Norman, J. W. Gooderham, C. D. Folrich, Arthur Bryant, E. P. Dudly, H. G. Venema, K. K. Burkhart, Dean Hawley, L. E. Doser, J. J. Scott, Helge Helgeson, W. G. Portner, E. E. Churchill, Henry Smith, George Wheeler, Kenneth Redman, W. S. Hillman and Ethan S. Smith."