

Mary Hershey Photo Album



Mount Olympus ~
From Dodwell Rixon
Pass ~



View up Elwa ~ from
Hume's Ranch ~



First Breakfast in camp~



Lunching On Elwa Trail

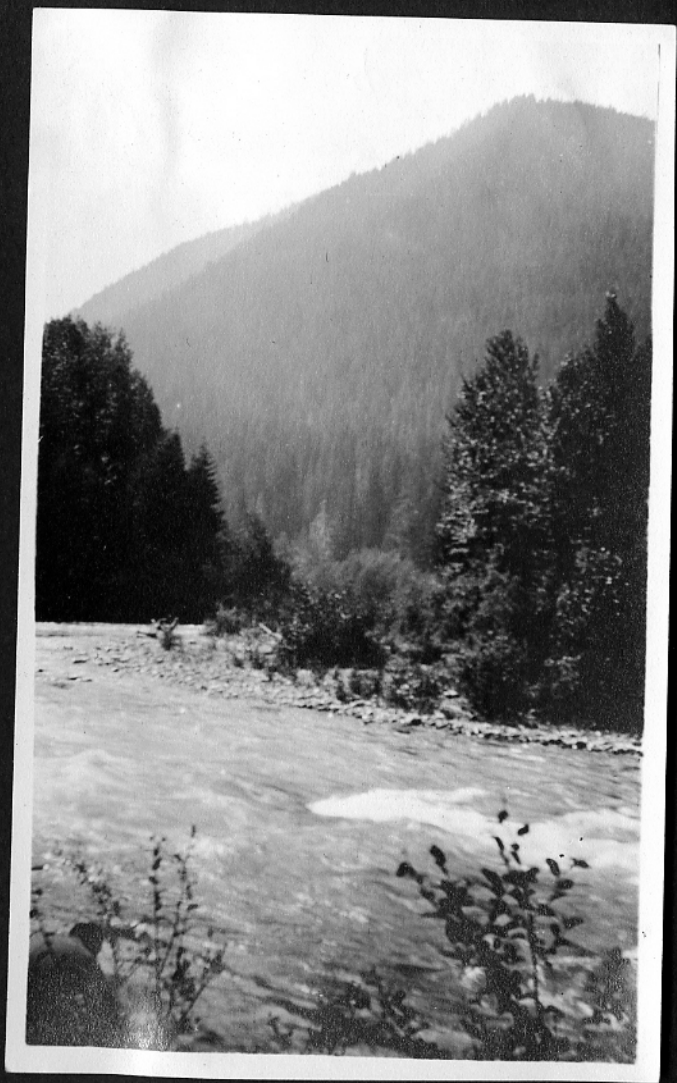


*Alders at Elkorn
Camp~*



Elwa in Canyon ~







Elwa at Elkorn ~



Camp Elkorn ~



Crossing Elwa~



A High Crossing ~



Marion Gorge & Pass ~



Near Main Camp ~



Three Chiefs ~

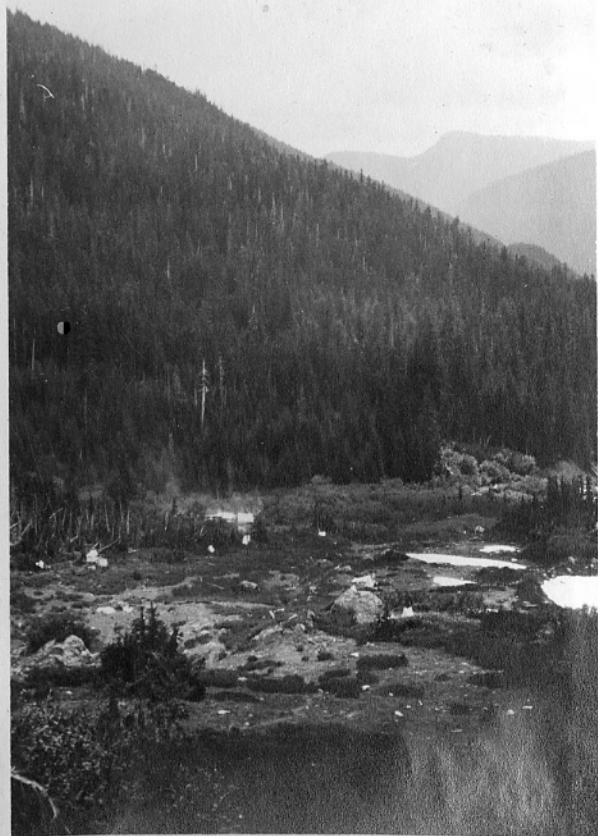


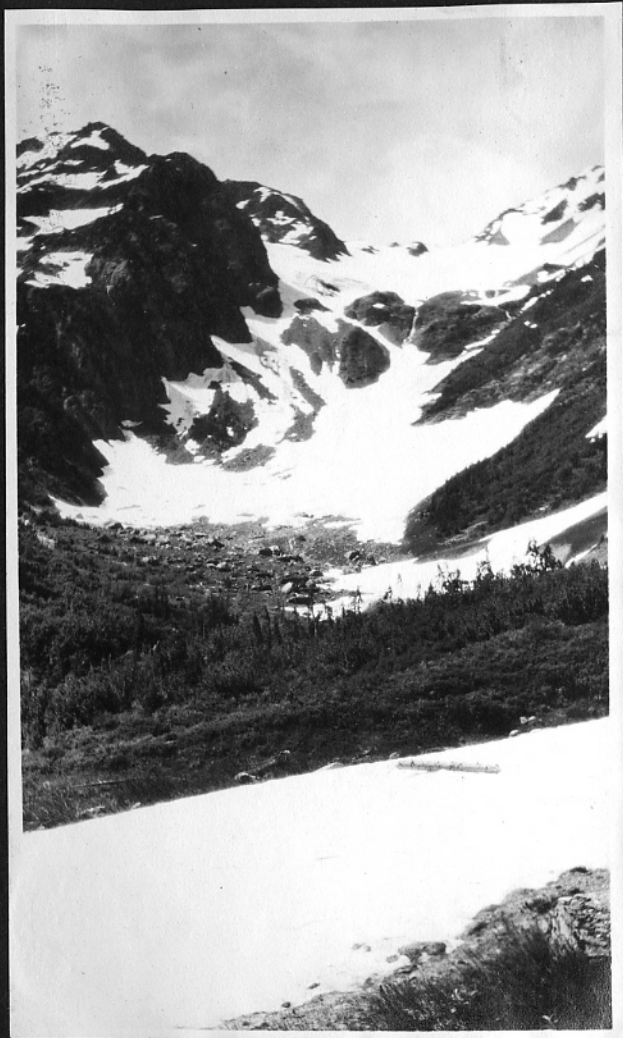
Below Seattle Glacier



In Lincoln 1st tryout trip on steep
slopes of Marion Gorge ~

Looking
down on
Main Camp
in Elwa Basin
from about
500ft above &
 $\frac{1}{2}$ mile distant-





Marion ~
Gorge & Gap.
from
Elwa Basin.
Mt. Seattle
on left ~



Steep Snow Work ~



Snow
Work~

*Climbing
Mount
Seattle*

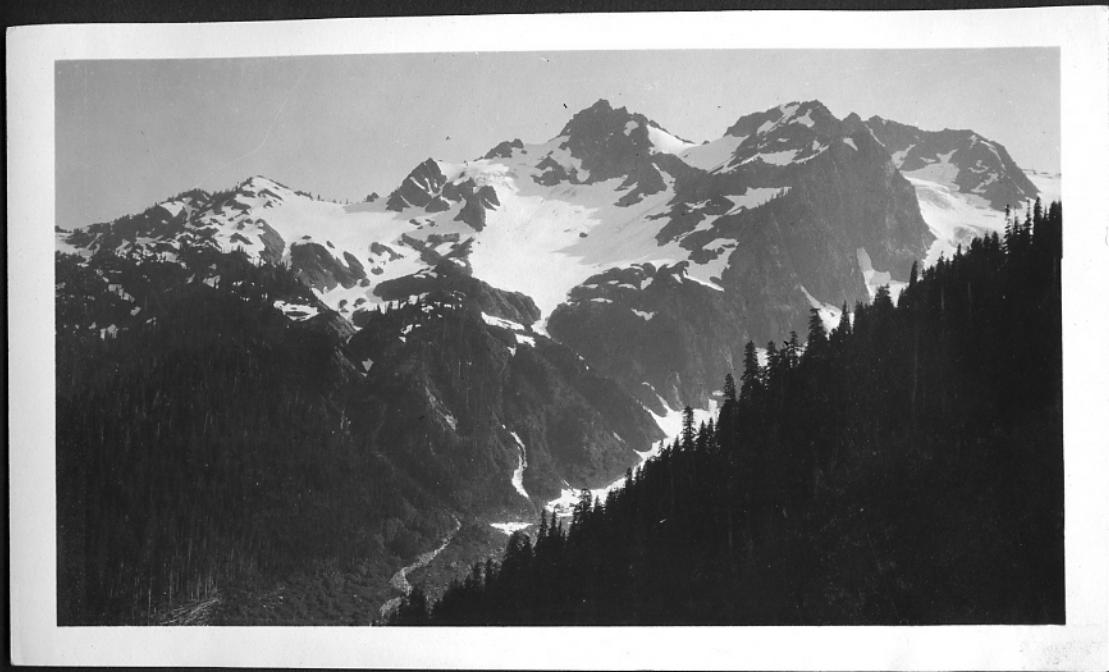




Mts Noyes, Olympus & Meany ~
View from lower Spur of
Mt Seattle ~



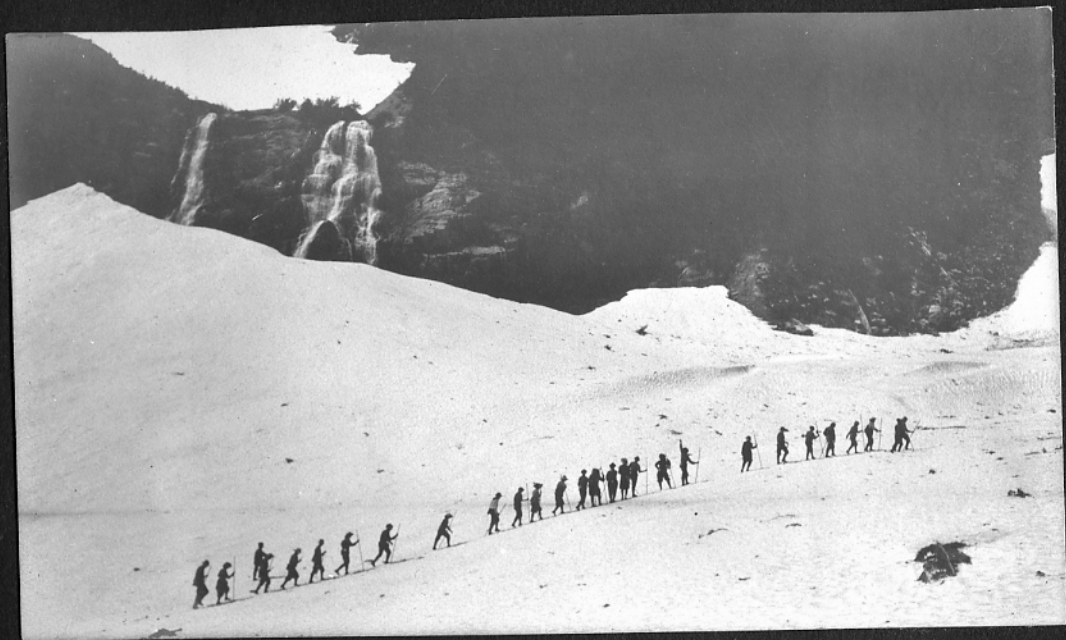
On Summit of Mount Seattle



Mount Seattle ~

Dodwell
Rixon
Pass~

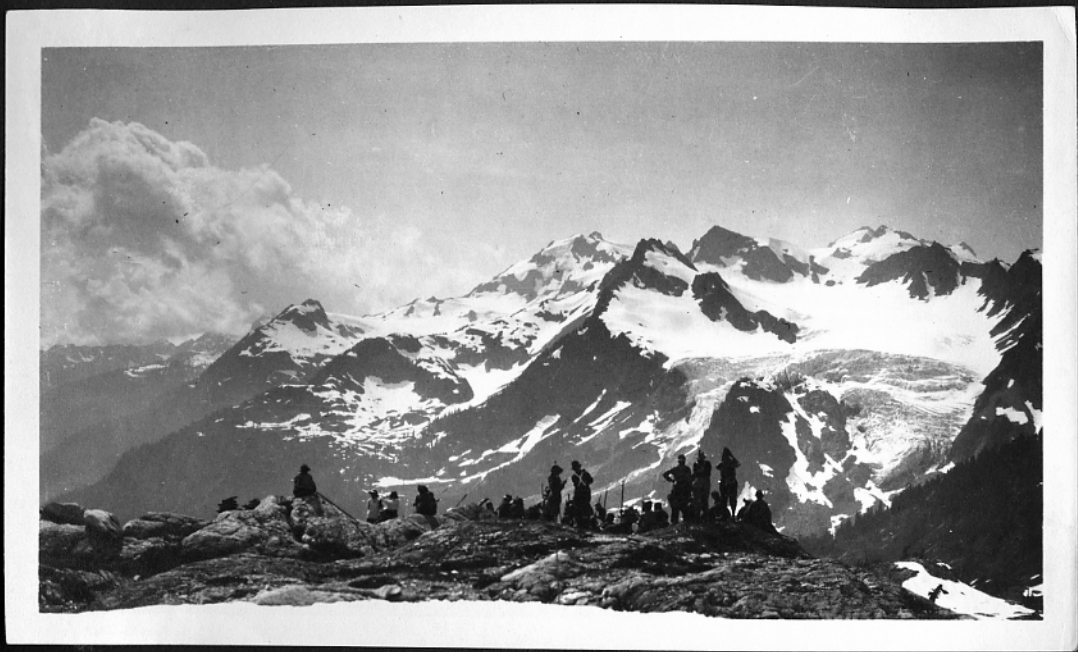




*Passing Waterfall on preliminary
trip to D.R. Pass ~*



View from upper snow field
below D.K. Pass ~



MOUNT OLYMPUS ~

Mountaineers in foreground ~



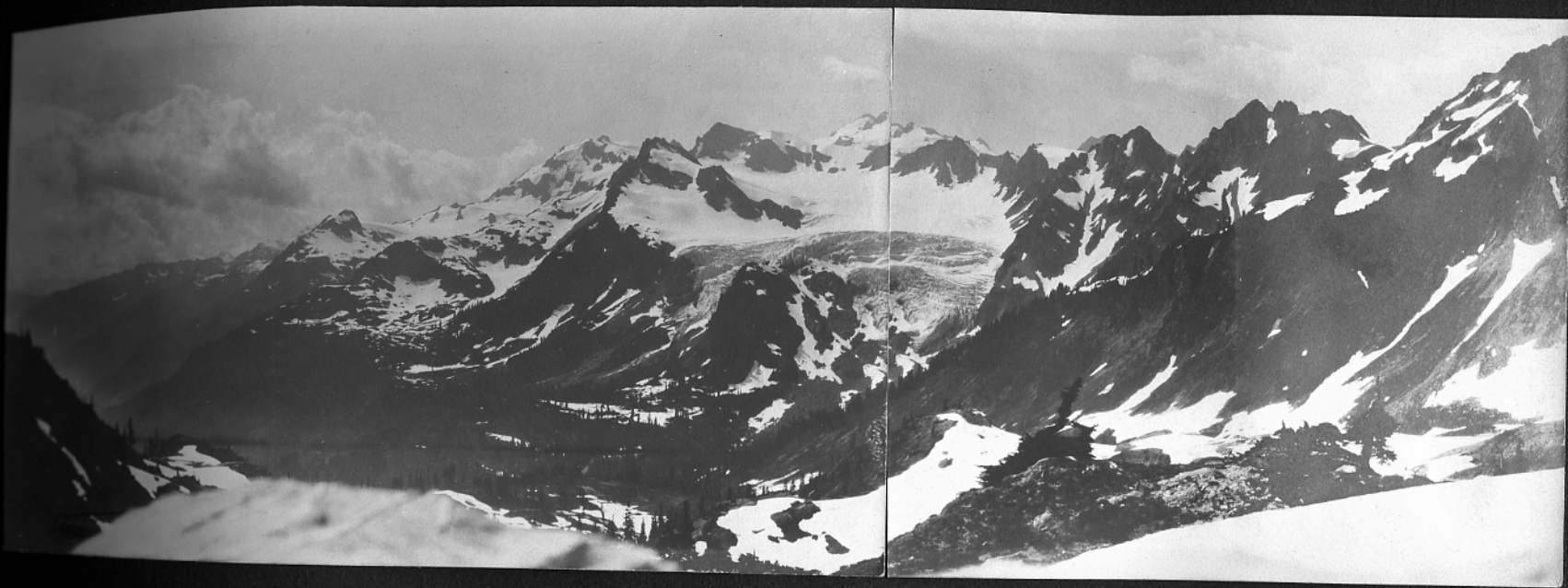
Top of D.R. Pass ~



Sermon — "I'denna lake to hear
The Word a' Gawd a Whistlin
through nar".



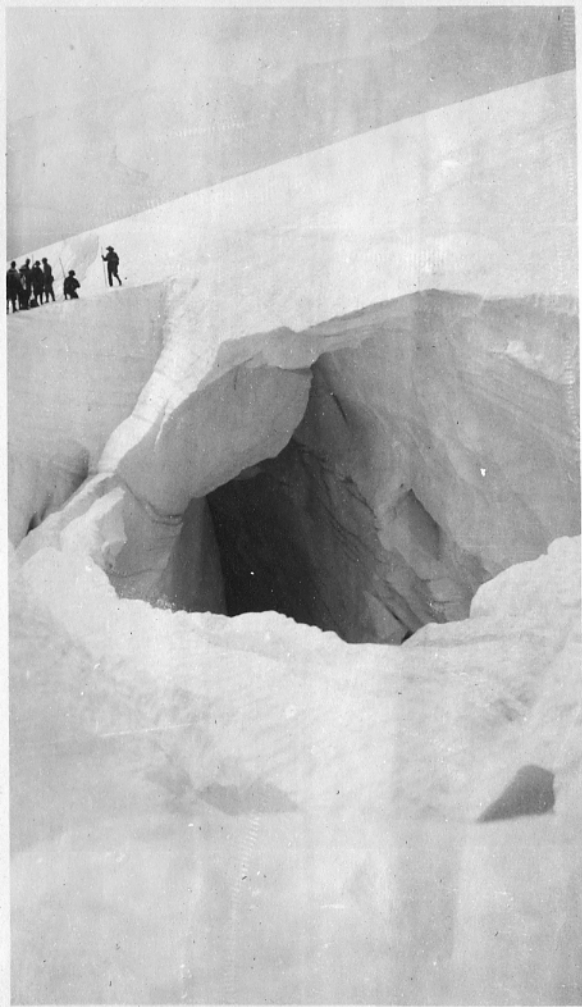
A human pack train ~



View of Mt. Olympus ~ middle & east
peak. Hume Glacier ~
Queen's Basin River & Valley ~



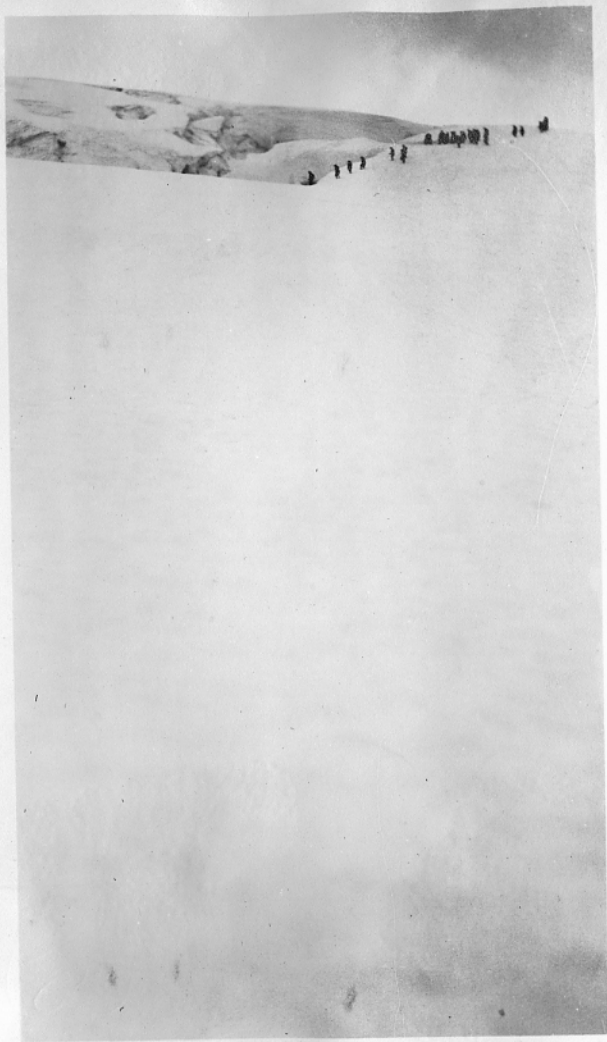
Outer Rim of Hume Glacier
Trail led among crevasses at right



On -
Hoh Glacier -

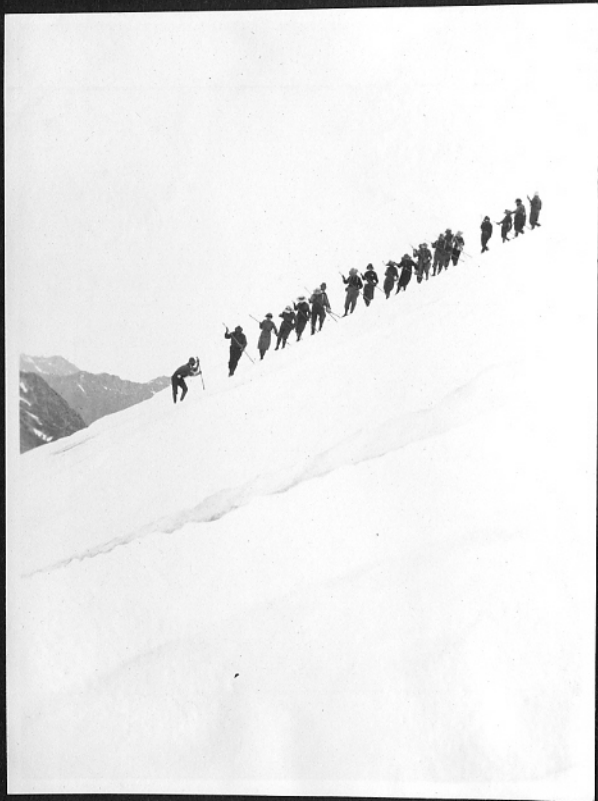


*View looking towards Mount Tacoma
from East Peak ~*



Part of a Line
rounding crevasse
in Blizzard Pass
in order to drop
down on
Hoh Glacier ~

*Descending
on to
Hoh Glacier*





Snow Tunnel ~

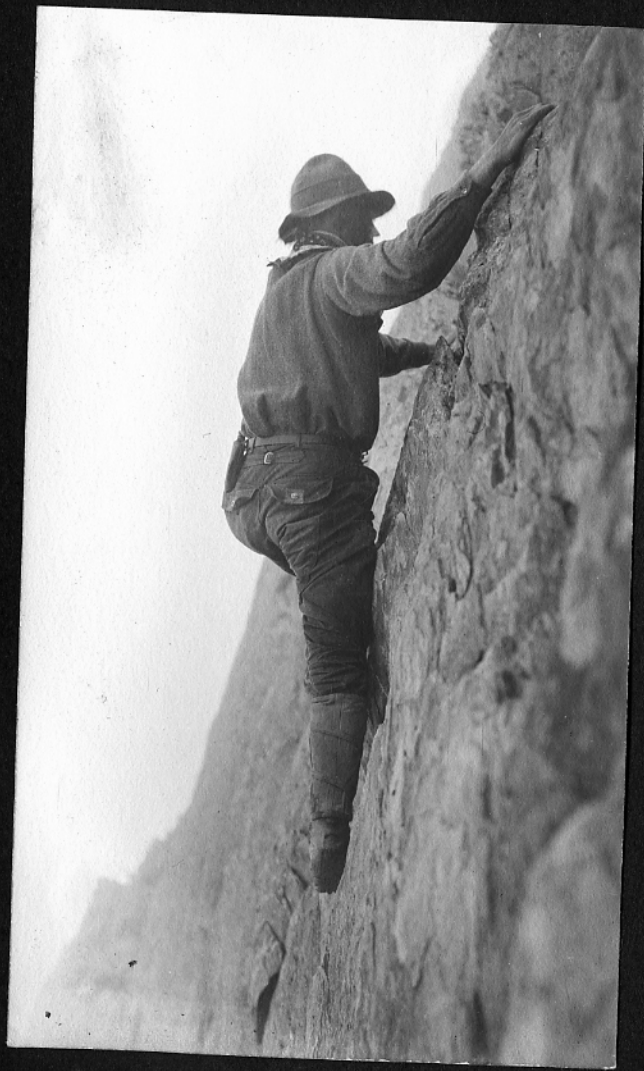


Mount Barnes from Mount
Seattle ~ Elwa Valley
in distance ~

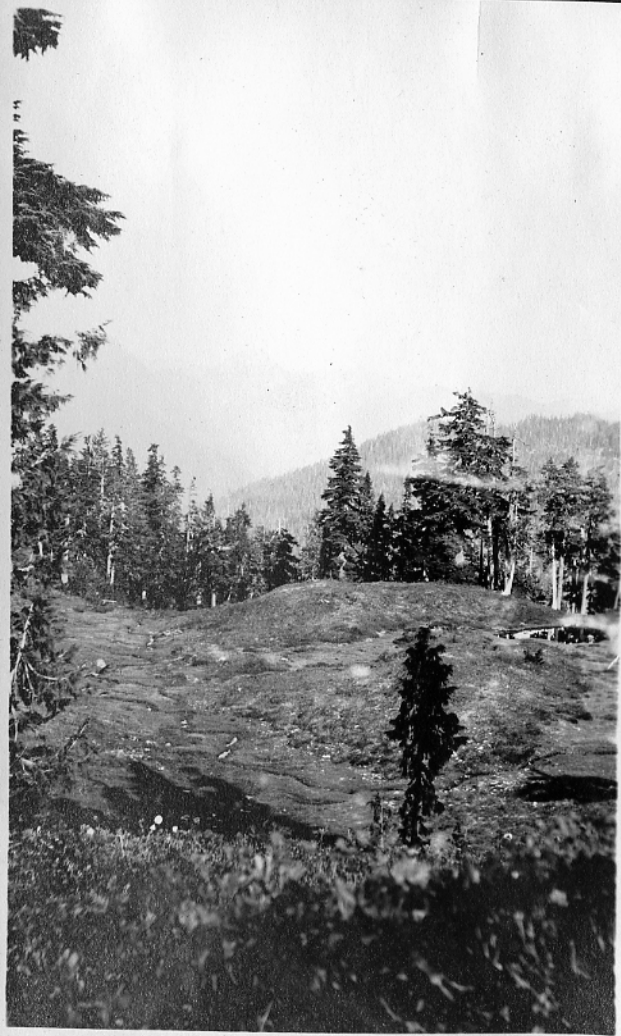


Climbers
of
Mt. Barnes
~

Difficult
place on
Mt Meany ~









Group of trees 1 mile below
Marion Gorge ~ Alaska Cedar
Douglas Fir & Hemlock ~



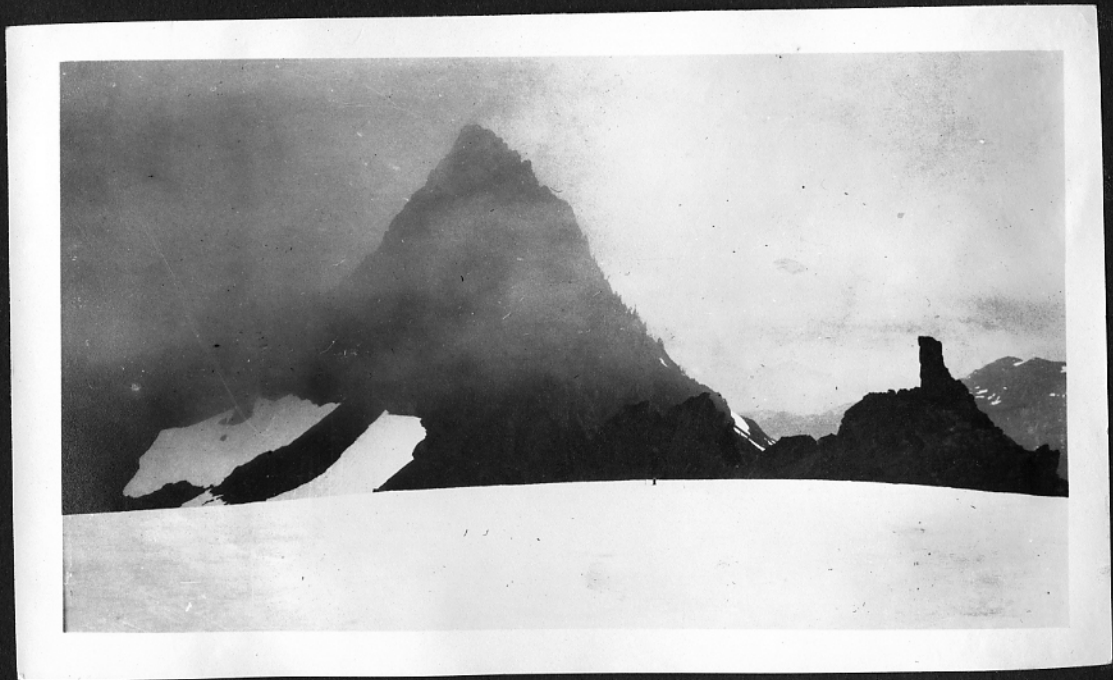
*"Line Up" for Breakfast at
Low Divide Camp. ~*



"Little Big Chief"



Mount Christy ~



Matterhorn on route to Mount Christy



"One" on Mount Christy -



Promise Creek Camp ~
Junction of North Fork of Quinalt
River on right & Province on left



The Wet Ford ~



Over North Fork of Quinault
Just West of Big Slide - 15 feet.



Alder felled for 3^d crossing
of Quinault River ~

Quinault
at Canyon
Where men
packed bags





A mountain
tragedy ~
Elk hanging
over log
between
boulders ~



A washing ~



A pack train crossing
meadows — 120 Elk were seen
grazing here day previous.



Mount Olympus on descent
to Lake Quinault ~



Lake Quinault
from Knife Edge Trail.



Among Firs near Quinault Riv.



*Giant Spruce
near
Quinault*



Ready to Start ~



Tent mate in "Admiral's" Canoe
~ Notice good looking Squaw



Shooting Shortly Rapids



Shorty Rapids ~



Over a log~



Working around edge
of log jam ~



Scene on Quinnault ~



Looking down beach from our
camp at Tahola ~
Point Grenville 2 miles south ~



Point Grenville & Gull Rocks
from north



Waiting for train home ~



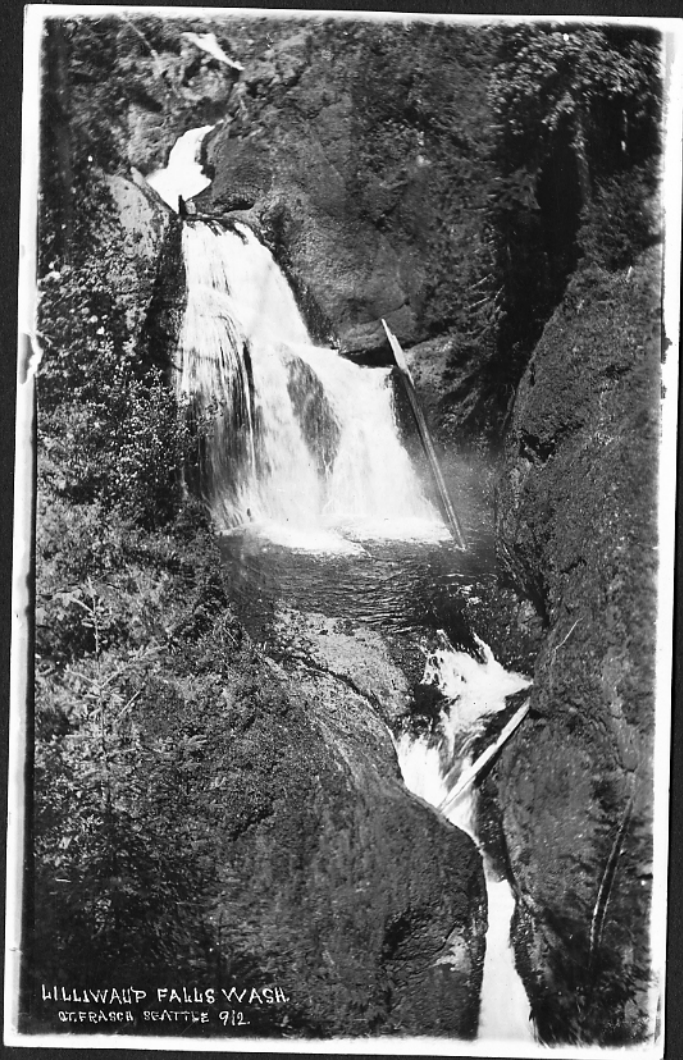
ON HOOD CANAL WASH.

OTFRASCH 901



ON THE SHORE OF HOOD CANAL

OTFRASCH SEATTLE 228



HILLWAMP FALLS WASH
GEORGE SEATTLE 912



ROCKY BROOK
FALLS





ROAD TO ROAD
ELEGANT SUMMER RESORT

O.T. HASCH
SEATTLE
300

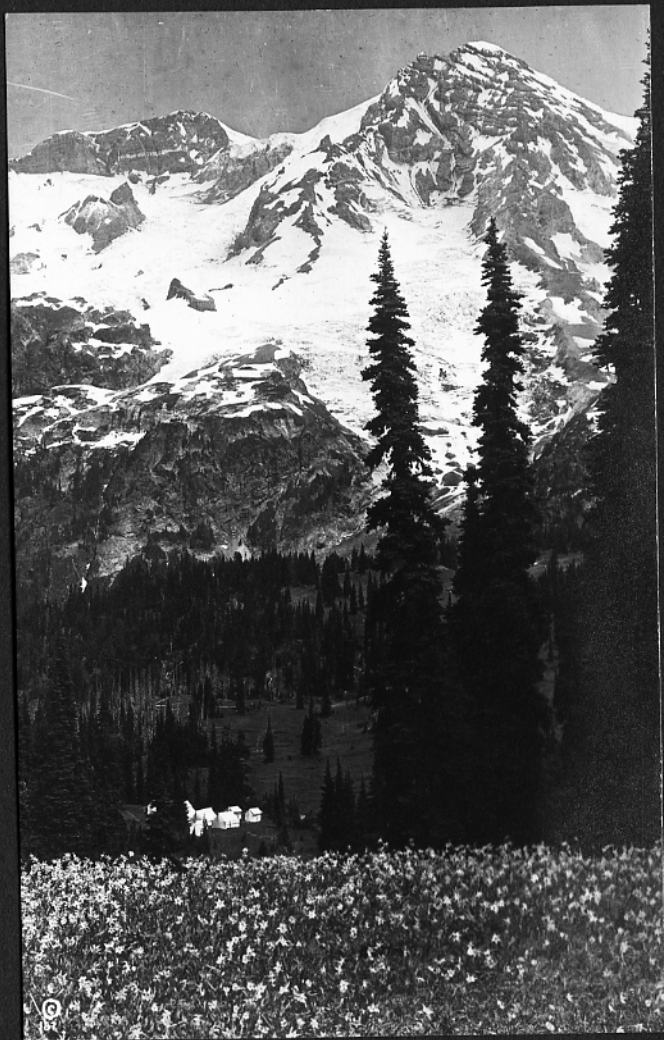






Mt. St. Helens

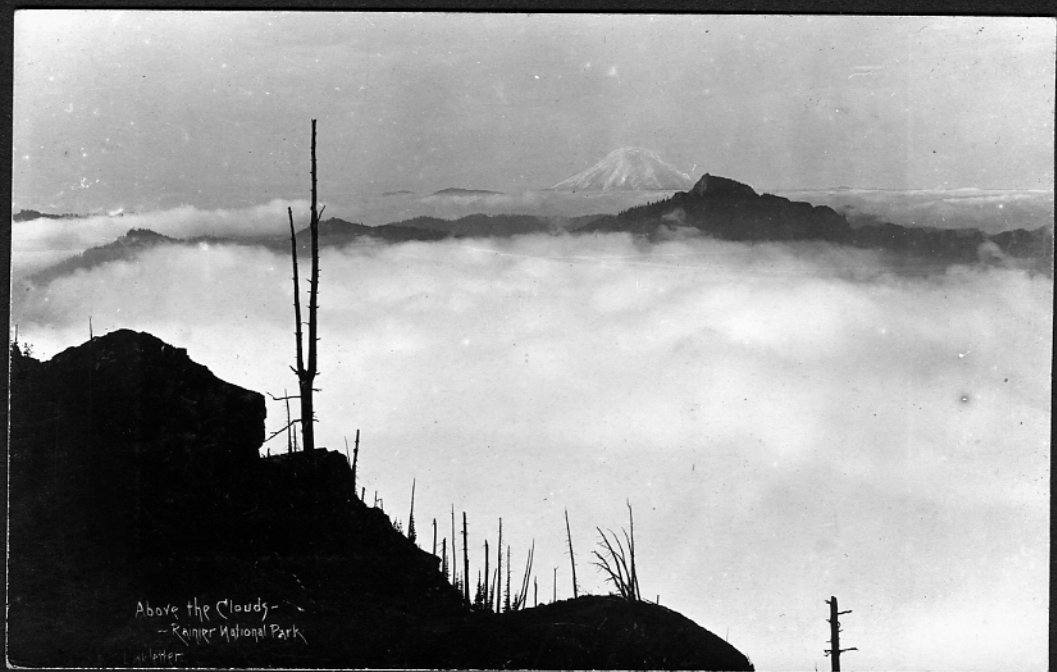
© 1964







Pyramid Peak



Above the Clouds -
- Rainier National Park

